

## Low-Maintenance Living with Everything at Your Doorstep



## For Sale

4 Sanderling Avenue, South Morang VIC 3752



3



2



426sqm

\$667,500

## For Sale

4 Sanderling Avenue, South Morang VIC 3752



3



2



426sqm

### Low-Maintenance Living with Everything at Your Doorstep

Located in a prime South Morang pocket, this stylish and spacious town residence offers a low-maintenance lifestyle just moments from local cafes and popular eateries. Families will appreciate the close proximity to both public and private schools, while commuters will enjoy easy access to South Morang Station. Westfield Plenty Valley's vibrant shopping, dining, and entertainment options are also just a short drive away.

Set across two sunlit levels, the home has been thoughtfully designed for comfortable and harmonious living. The ground floor features a generous lounge that seamlessly connects to a spacious meals area, overlooked by the kitchen complete with quality appliances and a practical breakfast bench-perfect for casual dining or entertaining. Glass sliding doors lead to a full-width covered alfresco area, creating an ideal outdoor setting for year-round enjoyment.

Upstairs, three well-sized bedrooms with built-in robes are serviced by a large central bathroom and ensuite, pr...



### Justin Sciola

Sales Director | Auctioneer - AReal Property South Morang

0423 916 416

03 8804 5888

[justin.sciola@areal.com.au](mailto:justin.sciola@areal.com.au)

A/REAL



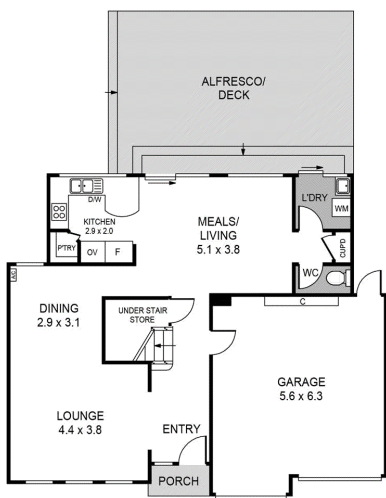




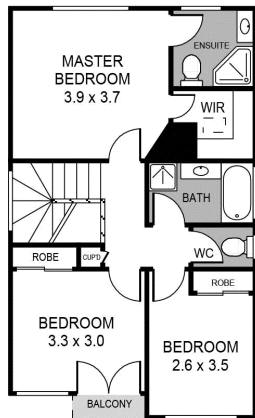
A/REAL

SHED  
2.5 x 2.5

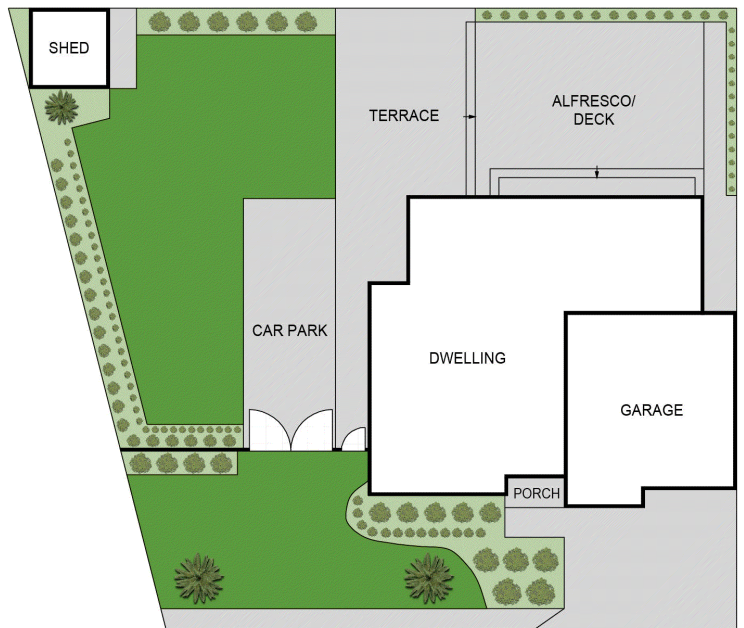
Not In Position



//FLOOR PLAN/Ground Floor



//FLOOR PLAN/First Floor



//SITE PLAN

## BOX HILL

Suite 3.4, Level 3, 990 Whitehorse Road, Box Hill. Victoria 3128 | 8686 8388

## HAWTHORN EAST

33 Camberwell Road, Hawthorn. Victoria 3123 | 9818 8991

## MELBOURNE CBD

Level 7, 99 Queen Street, Melbourne. VIC 3000 | 9818 8991

## NORTH

Suites 4 & 5 High Street, Lalor. VIC 3075 | 03 9436 0888

## POINT COOK

Entrance C4, Level 1, 2 Main Street, Point Cook. VIC 3030 | 8686 8338

## SOUTH MORANG

29 Gorge Road, South Morang. VIC 3752 | 8804 5888

[info@areal.com.au](mailto:info@areal.com.au)