

Expansive family home set over two levels



For Sale

13 Winthrop Court, Keysborough VIC 3173

 4  2  524sqm

1150000

For Sale

13 Winthrop Court, Keysborough VIC 3173



4



2



524sqm

Expansive family home set over two levels

The peaceful cul-de-sac location immediately sets the tone for this family-friendly home crafted with modern living and comfort in mind. The expansive floorplan spans two light-filled levels and offers something for everyone whether you love to entertain, indulge in quiet escape or gather with loved ones and enjoy a delicious meal.

A selection of living spaces is on offer on the main level including a formal lounge room, a study and an open-plan kitchen, dining and living zone. For the avid cook, there's a walk-in pantry, a centre island and stainless steel appliances while outside, the eager host can entertain on the patio with a pergola. A powder room, laundry, under-stair storage and double garage, with internal access, add practicality to this impressive floorplan.

The upper level is centred around an open family room which would make the ideal rumpus or kids' play area. All three of the guest bedrooms feature built-in robes and are positioned within easy reach of the main bathr...



aReal



aReal



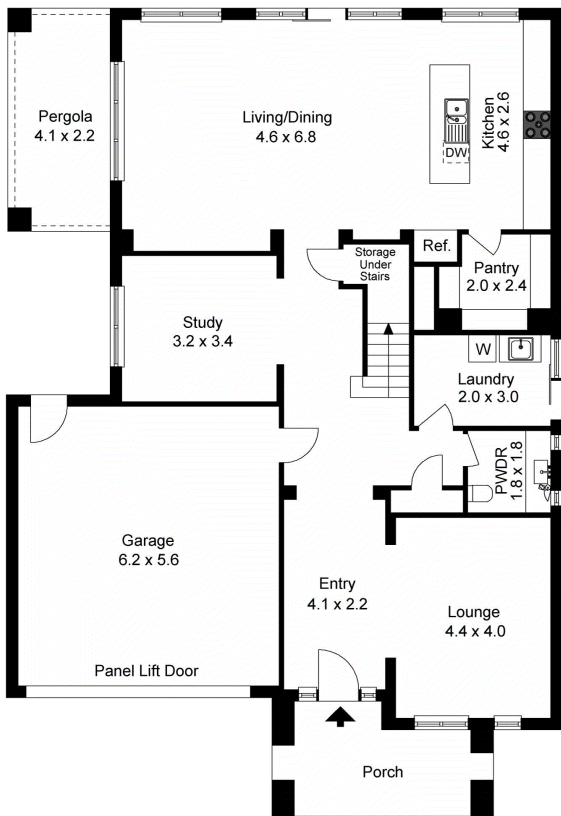
eReal



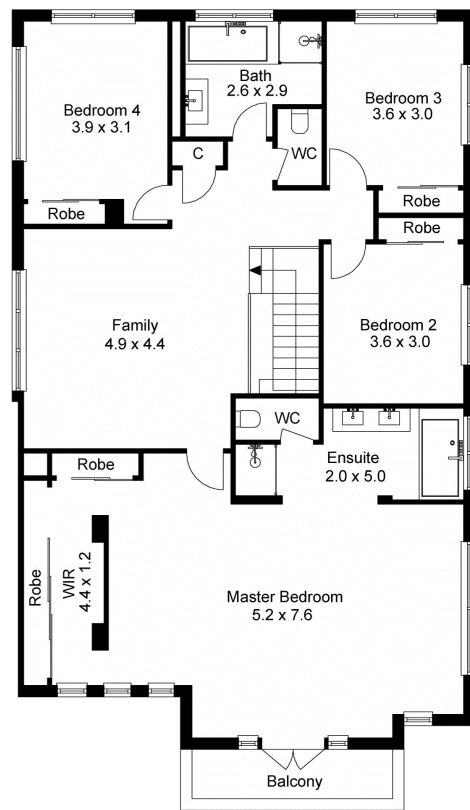
eReal



areal



Ground Floor



1st Floor



BOX HILL

Suite 3.4, Level 3, 990 Whitehorse Road, Box Hill. Victoria 3128 | 8686 8388

HAWTHORN EAST

33 Camberwell Road, Hawthorn. Victoria 3123 | 9818 8991

MELBOURNE CBD

Level 7, 99 Queen Street, Melbourne. VIC 3000 | 9818 8991

NORTH

Suites 4 & 5 High Street, Lalor. VIC 3075 | 03 9436 0888

POINT COOK

Entrance C4, Level 1, 2 Main Street, Point Cook. VIC 3030 | 8686 8338

SOUTH MORANG

29 Gorge Road, South Morang. VIC 3752 | 8804 5888

info@areal.com.au