

Contemporary Comfort with Resort-Style Living



For Lease

507/2 Golding Street, Hawthorn VIC 3122

 1  1

\$550 per Week

For Lease

507/2 Golding Street, Hawthorn VIC 3122



Contemporary Comfort with Resort-Style Living

Scheduling your property inspection is now a breeze! Simply click on the "Book an Inspection" or "Request a Time" button to secure your appointment. You'll instantly receive a confirmation and be kept up-to-date with any alterations or cancellations concerning your scheduled visit. Please be aware, inspections may be subject to cancellation if no bookings are registered. Make your booking today and take the first step in finding your ideal home

This stylish one-bedroom apartment offers premium fittings and fixtures throughout, with a generously sized living area filled with natural light. The carpeted bedroom includes built-in robes, while the fully equipped kitchen features stone benchtops and stainless steel European appliances. A sparkling modern bathroom with laundry facilities and floor-to-ceiling glass doors opens to a private balcony, completing the contemporary design.

Residents of the building enjoy secure entry and access to two luxurious lobbies enhanced with high cei...



A/REAL





ATRIA

APARTMENTS HAWTHORN
www.atria.com.au

| | |
|------------------|-------------------|
| Level | L05 |
| Apartment Number | G5.07 |
| No. of Bedrooms | 1 |
| No. of Bathrooms | 1 |
| Estimated Area | |
| Floor Area | 53 m ² |
| Balcony Area | 4 m ² |
| Total Area | 57 m ² |
| Car Space | 1 |

Developed By:

CAYDON

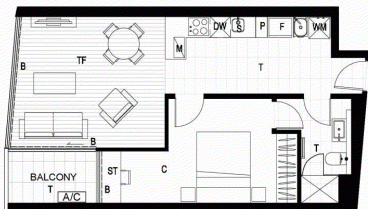
T + 613 9416 3400
F + 613 9416 3404
31 STANLEY STREET
COLLINGWOOD VIC 3066
www.caydon.com.au

Key Plan



Dimensions and areas are approximate and are subject to change. Internal measurements are taken from centerline of party walls and external face of the outside wall. Prospective purchasers must rely on their own enquiries and should refer to plans, terms and conditions in the contract of sale. Loose furniture, white goods and planters represented are not included.

F = Fridge
P = Pantry
S = Sink
DW = Dishwasher
M = Microwave
L = Linen
WM = Washing Machine
ST = Study
A/C = Airconditioner
T = Tile
C = Carpet
TF = Timber Flooring
HW = Highlight Window
B = Blinds
STO = Storage



WARDROBE STORAGE SYSTEM



BOX HILL

Suite 3.4, Level 3, 990 Whitehorse Road, Box Hill. Victoria 3128 | 8686 8388

HAWTHORN EAST

33 Camberwell Road, Hawthorn. Victoria 3123 | 9818 8991

MELBOURNE CBD

Level 7, 99 Queen Street, Melbourne. VIC 3000 | 9818 8991

NORTH

Suites 4 & 5 High Street, Lalor. VIC 3075 | 03 9436 0888

POINT COOK

Entrance C4, Level 1, 2 Main Street, Point Cook. VIC 3030 | 8686 8338

SOUTH MORANG

29 Gorge Road, South Morang. VIC 3752 | 8804 5888

info@areal.com.au