

## Sophisticated Urban Living with Unmatched Lifestyle Appeal



## For Lease

524/311 Burwood Road, Hawthorn VIC 3122



\$525 per Week

## For Lease

524/311 Burwood Road, Hawthorn VIC 3122



### Sophisticated Urban Living with Unmatched Lifestyle Appeal

\*\*Scheduling your property inspection is now a breeze! Simply click on the "Book an Inspection" or "Request a Time" button to secure your appointment. You'll instantly receive a confirmation and be kept up-to-date with any alterations or cancellations concerning your scheduled visit. Please be aware, inspections may be subject to cancellation if no bookings are registered. Make your booking today and take the first step in finding your ideal home\*\*

\*\*UNIQUE & LIMITED OPPORTUNITY – CONTEMPORARY LIVING IN THE HEART OF HAWTHORN\*\*

This is an exceptional opportunity to secure a beautifully appointed residence offering high-end living in one of Melbourne's most sought-after inner-city suburbs.

Showcasing premium finishes throughout, this apartment features a stylish combination of quality carpet and floorboards, an expansive living area bathed in natural light, and a generously sized bedroom complete with built-in robes. The sleek, fully equipped kitchen includes stone benchtops and stai...



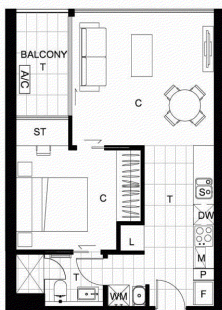
A/REAL





## ATRIA

APARTMENTS HAWTHORN  
www.atria.com.au



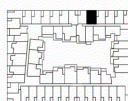
Level	L01
Apartment Number	B1.20
No. of Bedrooms	1
No. of Bathrooms	1
Estimated Area	
Floor Area	- 48 m <sup>2</sup>
Balcony Area	- 5 m <sup>2</sup>
Total Area	- 53 m <sup>2</sup>
Car Space	1

Developed By:



**CAYDON**  
T + 613 9416 3400  
F + 613 9416 3424  
34 STANLEY STREET  
COLLINGWOOD VIC 3066  
[www.caydon.com.au](http://www.caydon.com.au)

Key Plan



Dimensions and areas are approximate and are subject to change. Internal measurements are taken from centerline of party walls and external face of the outside wall. Prospective purchasers must rely on their own enquiries and should refer to plans, terms and conditions in the contract of sale. Loose furniture, white goods and planters represented are not included.

F = Fridge  
P = Pantry  
S = Sink  
DW = Dishwasher  
M = Microwave  
L = Linen  
WM = Washing Machine  
ST = Study  
A/C = Airconditioner  
T = Tile  
C = Carpet  
HW = Highlight Window



WARDROBE STORAGE SYSTEM



## BOX HILL

Suite 3.4, Level 3, 990 Whitehorse Road, Box Hill. Victoria 3128 | 8686 8388

## HAWTHORN EAST

33 Camberwell Road, Hawthorn. Victoria 3123 | 9818 8991

## MELBOURNE CBD

Level 7, 99 Queen Street, Melbourne. VIC 3000 | 9818 8991

## NORTH

Suites 4 & 5 High Street, Lalor. VIC 3075 | 03 9436 0888

## POINT COOK

Entrance C4, Level 1, 2 Main Street, Point Cook. VIC 3030 | 8686 8338

## SOUTH MORANG

29 Gorge Road, South Morang. VIC 3752 | 8804 5888

[info@areal.com.au](mailto:info@areal.com.au)