

Contemporary family home in a prized location



For Sale

66 Ellsworth Crescent, Camberwell VIC 3124

 3  3

\$1,308,000

For Sale

66 Ellsworth Crescent, Camberwell VIC 3124



Contemporary family home in a prized location

From first-time buyers to young families, downsizers and astute property investors, this contemporary Camberwell home will appeal to a wide variety of house-hunters. The low-maintenance and stylish layout is sure to impress as will the prized location in a quiet street close to schools, parks, shops and amenities.

The split-level main floor features on-trend flooring, tall ceilings and crisp white walls. An open study is set just off the entry while at the rear of the layout you will find a light-filled and spacious kitchen, dining and living room. A suite of stainless steel appliances are on hand to make cooking a joy plus there's a breakfast bar for casual meals, sweeping benchtops and plenty of storage including a walk-in pantry.

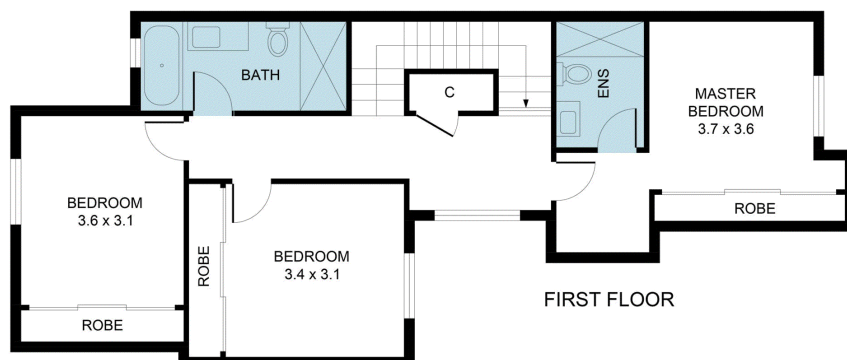
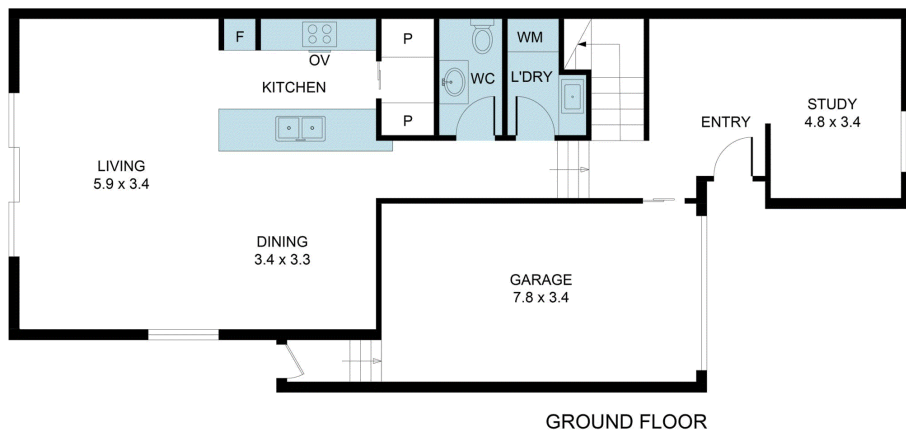
A powder room, laundry and single garage complete this level or you can step outside to the sunny patio and private backyard to host guests or relax with loved ones.

All three bedrooms are located on the upper level with each offering a built-in robe in...

A/REAL







BOX HILL

Suite 3.4, Level 3, 990 Whitehorse Road, Box Hill. Victoria 3128 | 8686 8388

HAWTHORN EAST

33 Camberwell Road, Hawthorn. Victoria 3123 | 9818 8991

MELBOURNE CBD

Level 7, 99 Queen Street, Melbourne. VIC 3000 | 9818 8991

NORTH

Suites 4 & 5 High Street, Lalor. VIC 3075 | 03 9436 0888

POINT COOK

Entrance C4, Level 1, 2 Main Street, Point Cook. VIC 3030 | 8686 8338

SOUTH MORANG

29 Gorge Road, South Morang. VIC 3752 | 8804 5888

info@areal.com.au