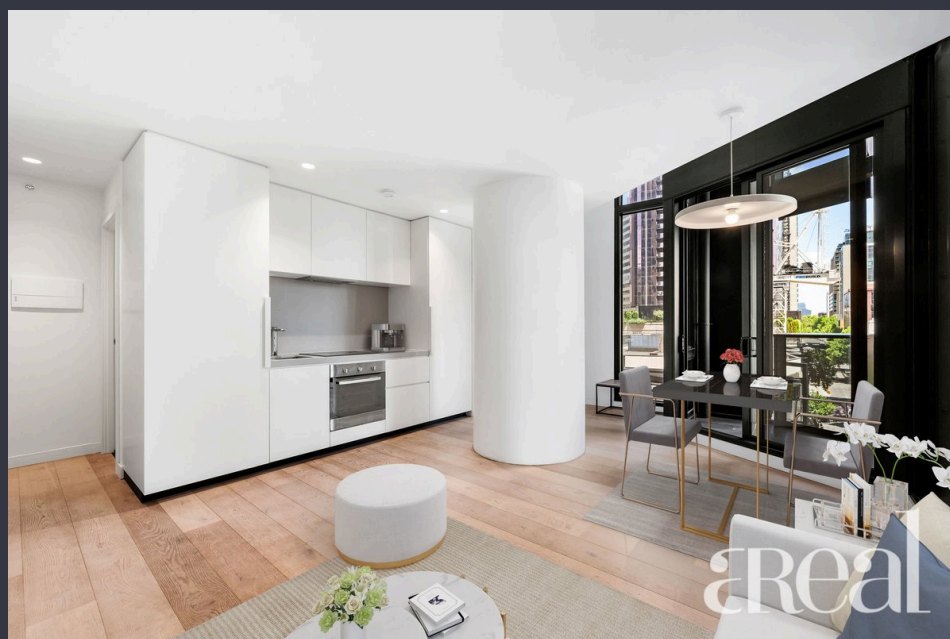


Enjoy the stylish modern living
in the heart of Melbourne



For Sale

601/398 Elizabeth Street, Melbourne VIC 3000



Contact Agent

For Sale

601/398 Elizabeth Street, Melbourne VIC 3000



Enjoy the stylish modern living in the heart of Melbourne

COVID OPEN RULES

YOU MUST REGISTER FOR THIS INSPECTION!

IF YOU DO NOT REGISTER, WE ARE NOT ALLOWED TO TAKE YOU THROUGH THE PROPERTY. THANK YOU FOR YOUR COOPERATION!

In the heart of Melbourne's prosperous metropolis, Empire is a glistening architectural icon only seconds from RMIT and surrounded by the Queen Victoria Market, Melbourne University, the State Library, supermarkets and premium retail at Melbourne Central and QV.

Flaunting a stunning two-level 70 sqm design, this apartment will excite with its modern design, cutting-edge fittings and finishes as well as airy balconies with double height ceiling. Rejuvenate in the spacious open-plan living/dining, accompanied by a crisp white stone kitchen with high-quality appliances, a convenient powder room and split system air-conditioning.

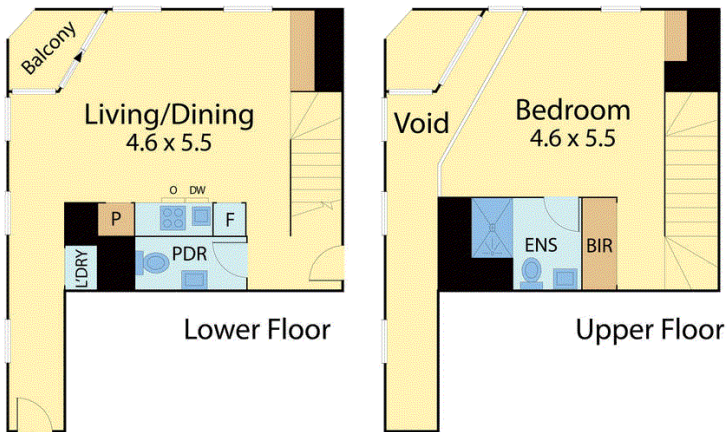
Upstairs, the large En-Suite bedroom is a private haven with a luxe bathroom. Residents will gravitate to the facilities which include a pool, gym, yoga studio and executive lounge and dining roo...







601/398 Elizabeth Street, Melbourne



Entry

Internal 70 m² Approx.
Balcony 3m² Approx.

BOX HILL

Suite 3.4, Level 3, 990 Whitehorse Road, Box Hill. Victoria 3128 | 8686 8388

HAWTHORN EAST

33 Camberwell Road, Hawthorn. Victoria 3123 | 9818 8991

MELBOURNE CBD

Level 7, 99 Queen Street, Melbourne. VIC 3000 | 9818 8991

NORTH

Suites 4 & 5 High Street, Lalor. VIC 3075 | 03 9436 0888

POINT COOK

Entrance C4, Level 1, 2 Main Street, Point Cook. VIC 3030 | 8686 8338

SOUTH MORANG

29 Gorge Road, South Morang. VIC 3752 | 8804 5888

info@areal.com.au