

Contemporary and easy-care home



For Sale

25 Coronat Drive, Williams Landing VIC 3027

 4

 2

 448sqm

635000

For Sale

25 Coronat Drive, Williams Landing VIC 3027

 4  2  448sqm

Contemporary and easy-care home

Those craving easy-care contemporary living will adore this move-in ready home located in an unbeatable enclave of Williams Landing. There is plenty of room for a growing family while investors and first-time buyers alike will appreciate the convenience this property offers.

The floorplan boasts four bedrooms and two bathrooms including the owner's suite with a walk-in robe and ensuite. There are two living spaces to enjoy including a separate family room and an open-plan living and dining space that flows out to the rear patio. Here, you can entertain friends all summer long or create the lush landscaped gardens you have always wanted, the choice is yours.

A quality kitchen with gas cooking and a dishwasher is set in the heart of the home while a host of extra features abound and include built-in robes to the guest bedrooms, a large laundry, easy-care tiled floors in the living spaces and a double garage.

Whether you are a growing family or simply love to stay active, you will ado...



Andy Yuan

Senior Sales Executive, Licensed Estate Agent, Auctioneer

0406 217 388

03 8686 8388

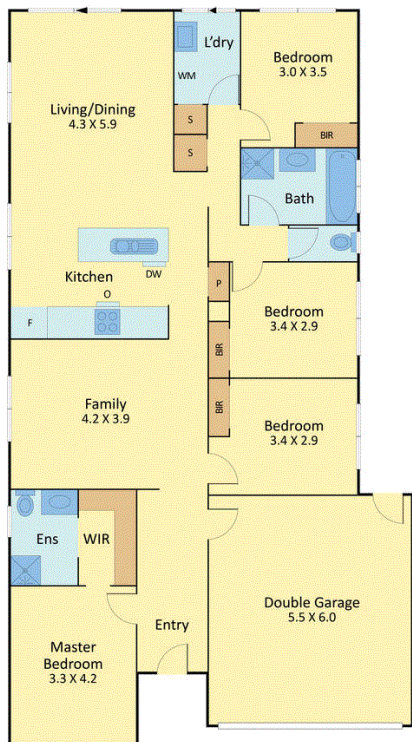
andy.yuan@areal.com.au







25 Coronat Drive, Williams Landing



Internal 184 m2 (19.8 squares) Approx.

BOX HILL

Suite 3.4, Level 3, 990 Whitehorse Road, Box Hill. Victoria 3128 | 8686 8388

HAWTHORN EAST

33 Camberwell Road, Hawthorn. Victoria 3123 | 9818 8991

MELBOURNE CBD

Level 7, 99 Queen Street, Melbourne. VIC 3000 | 9818 8991

NORTH

Suites 4 & 5 High Street, Lalor. VIC 3075 | 03 9436 0888

POINT COOK

Entrance C4, Level 1, 2 Main Street, Point Cook. VIC 3030 | 8686 8338

SOUTH MORANG

29 Gorge Road, South Morang. VIC 3752 | 8804 5888

info@areal.com.au