

Please Contact Agent for a  
Private Inspection



For Sale

329 Saltwater Promenade, Point Cook VIC 3030

 4  2  448sqm

\$755,000

## For Sale

329 Saltwater Promenade, Point Cook VIC 3030



4



2



448sqm

Please Contact Agent for a Private Inspection

Enjoy family-friendly living and an immaculate home

Whether you are a growing family in need of room to move and play or simply enjoy the space and privacy a large home offers, this property is a must-see. It's sleek, stylish and impeccably-presented, with open-plan living that invites you to rest and relax.

A quality kitchen sits in the heart of the main living space, complete with gas cooking, a dishwasher and a huge walk-in pantry. A breakfast bar provides the perfect place to enjoy casual dining and there is also a dining area, a living room, a study and a family room set at the front of the home. Four bedrooms are housed upstairs, three with built-in robes and the owner's suite with a walk-in robe, an ensuite and a sitting nook. The main bathroom is also housed on this level, along with a third living space ready for use as a retreat or a playroom depending on your needs.

Outside, there is a great-sized backyard with a grassed area for the kids and pets as well as a sunny patio ...



### Andy Yuan

Senior Sales Executive, Licensed Estate Agent, Auctioneer

0406 217 388

03 8686 8388

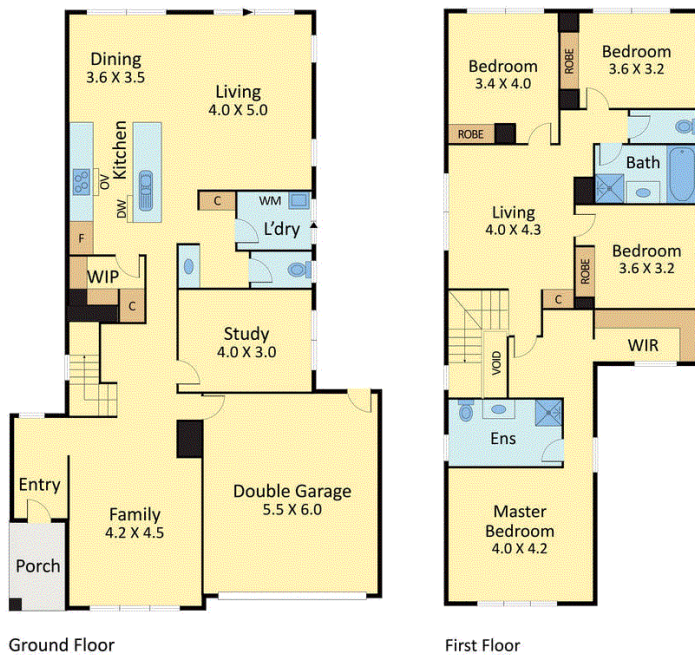
[andy.yuan@areal.com.au](mailto:andy.yuan@areal.com.au)







## 329 Saltwater Promenade, Point Cook



Internal 248 m<sup>2</sup> (26.7 squares)



## BOX HILL

Suite 3.4, Level 3, 990 Whitehorse Road, Box Hill. Victoria 3128 | 8686 8388

## HAWTHORN EAST

33 Camberwell Road, Hawthorn. Victoria 3123 | 9818 8991

## MELBOURNE CBD

Level 7, 99 Queen Street, Melbourne. VIC 3000 | 9818 8991

## NORTH

Suites 4 & 5 High Street, Lalor. VIC 3075 | 03 9436 0888

## POINT COOK

Entrance C4, Level 1, 2 Main Street, Point Cook. VIC 3030 | 8686 8338

## SOUTH MORANG

29 Gorge Road, South Morang. VIC 3752 | 8804 5888

[info@areal.com.au](mailto:info@areal.com.au)