

Family home close to schools  
and shops



For Sale

6 Ostend Crescent, Point Cook VIC 3030



4



2



400sqm

600000

## For Sale

6 Ostend Crescent, Point Cook VIC 3030

 4  2  400sqm

### Family home close to schools and shops

This could be the ultimate family home you've been searching for. From the sprawling layout and multiple living zones to the quiet family-friendly location just moments from everything you could ever need, there is so much to love about this must-see property.

Anyone craving room to move and play will be drawn to the four-bedroom, two-bathroom floorplan with a large master set at the front of the home and offering a walk-in robe and ensuite. The secondary bedrooms all have built-in robes while two are just steps from the main bathroom with a separate bath, shower and toilet.

The hub of the home is the open-plan kitchen, dining and living zone, perfectly crafted for contemporary living. You can be cooking up a storm in the kitchen while hosting guests for your next dinner party or keeping an eye on the kids as they play in the living room.

A dishwasher, a walk-in pantry and an expansive centre island will delight anyone who loves to cook plus there's also a stainless steel gas cookt...



### Andy Yuan

Senior Sales Executive, Licensed Estate Agent, Auctioneer

0406 217 388

03 8686 8388

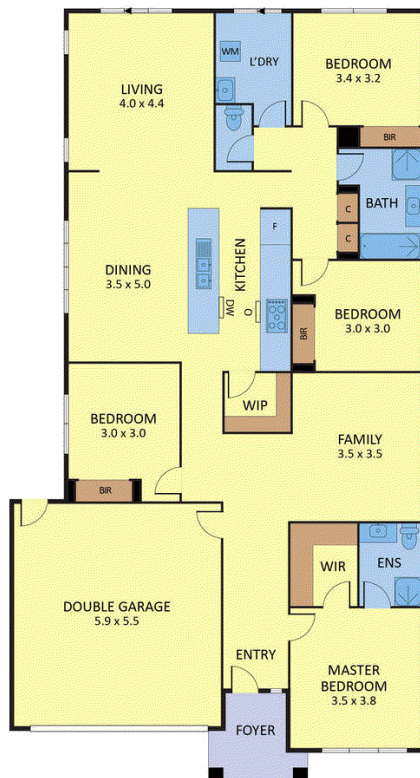
[andy.yuan@areal.com.au](mailto:andy.yuan@areal.com.au)







## 6 Ostend Cre, Point Cook



## BOX HILL

Suite 3.4, Level 3, 990 Whitehorse Road, Box Hill. Victoria 3128 | 8686 8388

## HAWTHORN EAST

33 Camberwell Road, Hawthorn. Victoria 3123 | 9818 8991

## MELBOURNE CBD

Level 7, 99 Queen Street, Melbourne. VIC 3000 | 9818 8991

## NORTH

Suites 4 & 5 High Street, Lalor. VIC 3075 | 03 9436 0888

## POINT COOK

Entrance C4, Level 1, 2 Main Street, Point Cook. VIC 3030 | 8686 8338

## SOUTH MORANG

29 Gorge Road, South Morang. VIC 3752 | 8804 5888

[info@areal.com.au](mailto:info@areal.com.au)