

## Corner Block with Playground and Sports Reserve across the street



## For Sale

11 Freya Drive, Williams Landing VIC 3027



4



2



416sqm

\$630,000-\$680,000 Corner Block

## For Sale

11 Freya Drive, Williams Landing VIC 3027



4



2



416sqm

### Corner Block with Playground and Sports Reserve across the street

Convenient, comfortable and family-friendly living is assured in this contemporary four-bedroom, two-bathroom home. Owner-occupiers will adore the enviable corner block position along with the nearby parks, shops and playground while investors will be drawn to the low-maintenance appeal of this impressive property.

Perfectly crafted for modern living, the layout is centred around an open-plan and air-conditioned kitchen, living and dining space which flows effortlessly out to the covered alfresco. Here, you can entertain guests and relax in absolute comfort while the kids and family pet run free in the generous and fully fenced backyard.

Whether you're preparing an intimate dinner for two or a gourmet feast for friends and family, the well-equipped kitchen is sure to delight any passionate cook. Quality stainless steel appliances and sweeping benchtops will make preparing meals a pleasure plus there's a centre island, a dishwasher, a pantry and easy-clean tiles underfoot.

For absol...



### Andy Yuan

Senior Sales Executive, Licensed Estate Agent, Auctioneer

0406 217 388

03 8686 8388

[andy.yuan@areal.com.au](mailto:andy.yuan@areal.com.au)

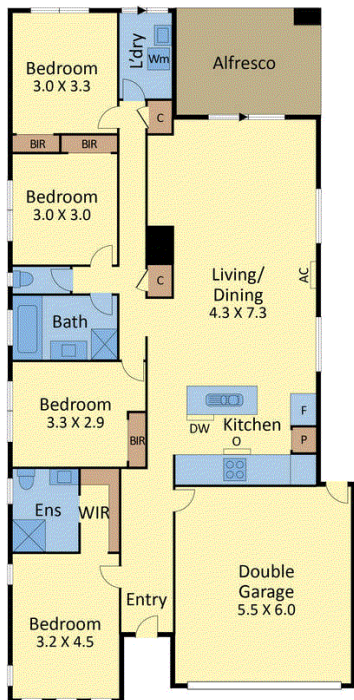






areal

## 11 Freya Drive, Williams Landing



## BOX HILL

Suite 3.4, Level 3, 990 Whitehorse Road, Box Hill. Victoria 3128 | 8686 8388

## HAWTHORN EAST

33 Camberwell Road, Hawthorn. Victoria 3123 | 9818 8991

## MELBOURNE CBD

Level 7, 99 Queen Street, Melbourne. VIC 3000 | 9818 8991

## NORTH

Suites 4 & 5 High Street, Lalor. VIC 3075 | 03 9436 0888

## POINT COOK

Entrance C4, Level 1, 2 Main Street, Point Cook. VIC 3030 | 8686 8338

## SOUTH MORANG

29 Gorge Road, South Morang. VIC 3752 | 8804 5888

[info@areal.com.au](mailto:info@areal.com.au)