

## Stunning 2 Bedroom



## For Lease

305/6 Lisson Grove, Hawthorn VIC 3122

 2  1

\$490 per Week

## For Lease

305/6 Lisson Grove, Hawthorn VIC 3122



### Stunning 2 Bedroom

Open for Inspection:

Please register to inspect this property. When inspection times are scheduled/changed or the property is no longer available, only those registered will be advised.

Ultra-modern 2 bedroom apartment in one of Melbourne's most desired locations.

This apartment features an amazing kitchen with ample cupboard space, Miele Stainless steel gas/electric cooking appliances, Miele Dishwasher, Caesar stone benchtops, and Polished Mirror splashbacks

The bathroom features Clear Glass Frameless shower screens and is in Ultra modern styling. Additionally, the Apartment also comes with European laundry

The Open plan living area features European Oak parquetry Flooring, Samsung split system heating and cooling in all rooms Some with Private balconies, some with courtyard

Other features include storage cage, Swipe card access to foyers and lifts and also Video Intercom systems

This apartment is located in the heart Hawthorn with walking distance to Glenferrie Road, s...

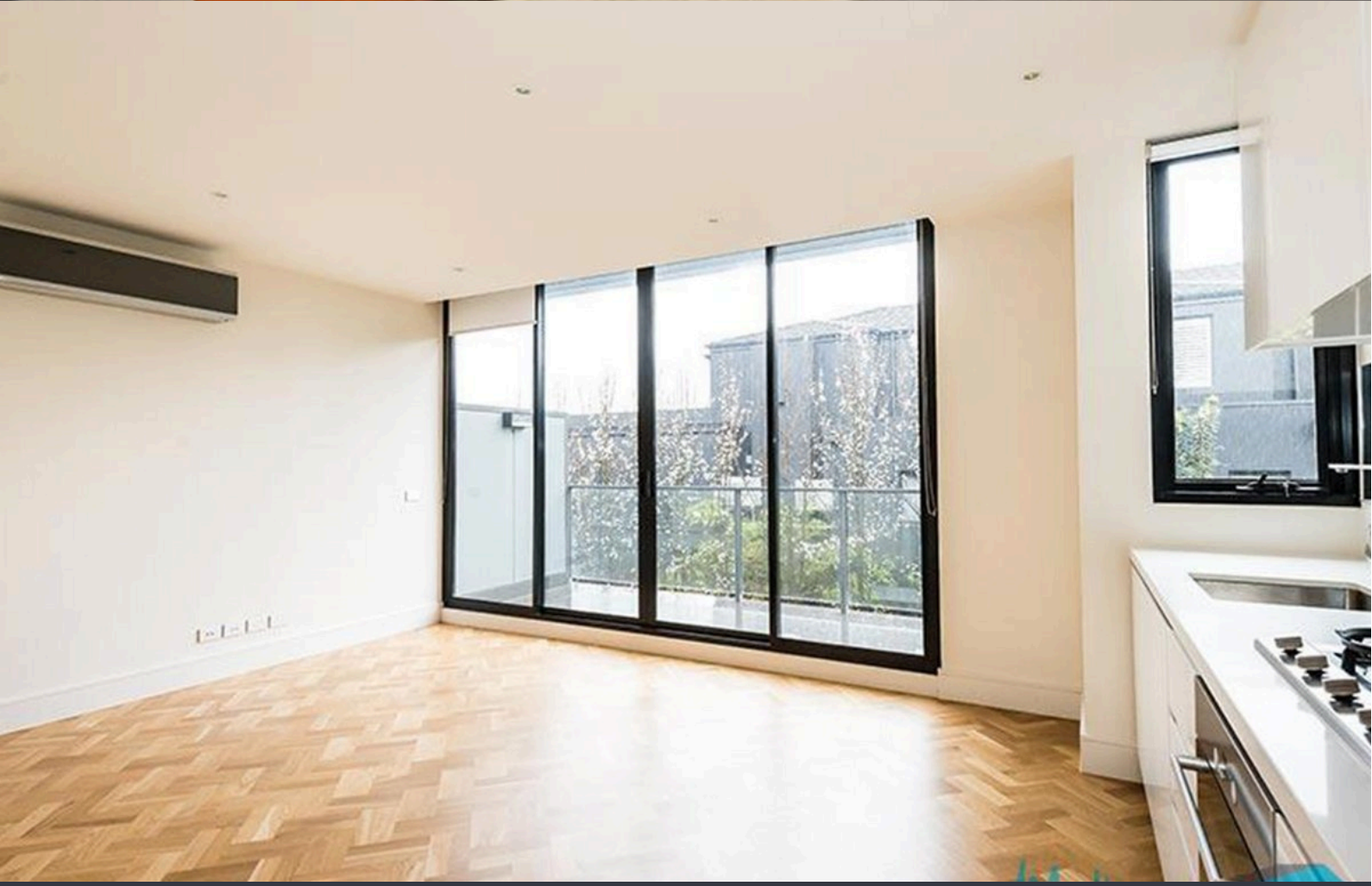
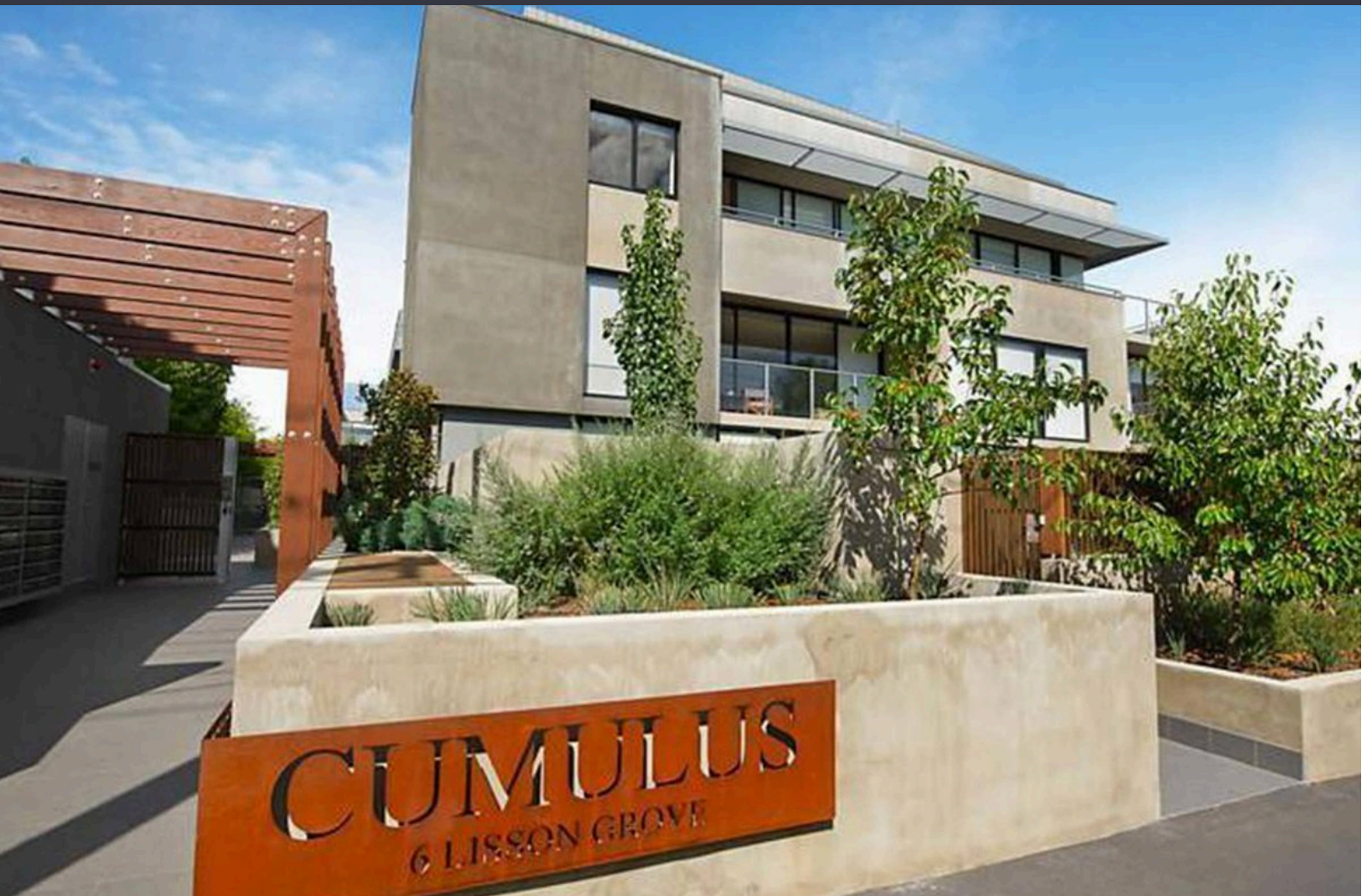


## Lauren Allan

Leasing Specialist

03 9818 8991

[lauren.allan@areal.com.au](mailto:lauren.allan@areal.com.au)



A/REAL



## BOX HILL

Suite 3.4, Level 3, 990 Whitehorse Road, Box Hill. Victoria 3128 | 8686 8388

## HAWTHORN EAST

33 Camberwell Road, Hawthorn. Victoria 3123 | 9818 8991

## MELBOURNE CBD

Level 7, 99 Queen Street, Melbourne. VIC 3000 | 9818 8991

## NORTH

Suites 4 & 5 High Street, Lalor. VIC 3075 | 03 9436 0888

## POINT COOK

Entrance C4, Level 1, 2 Main Street, Point Cook. VIC 3030 | 8686 8338

## SOUTH MORANG

29 Gorge Road, South Morang. VIC 3752 | 8804 5888

[info@areal.com.au](mailto:info@areal.com.au)