

Spacious 3-Bedroom Apartment with car space in the Heart of Melbourne



For Lease

215/538 Little Lonsdale Street, Melbourne VIC 3000

 3  1

\$880 per Week

For Lease

215/538 Little Lonsdale Street, Melbourne VIC 3000

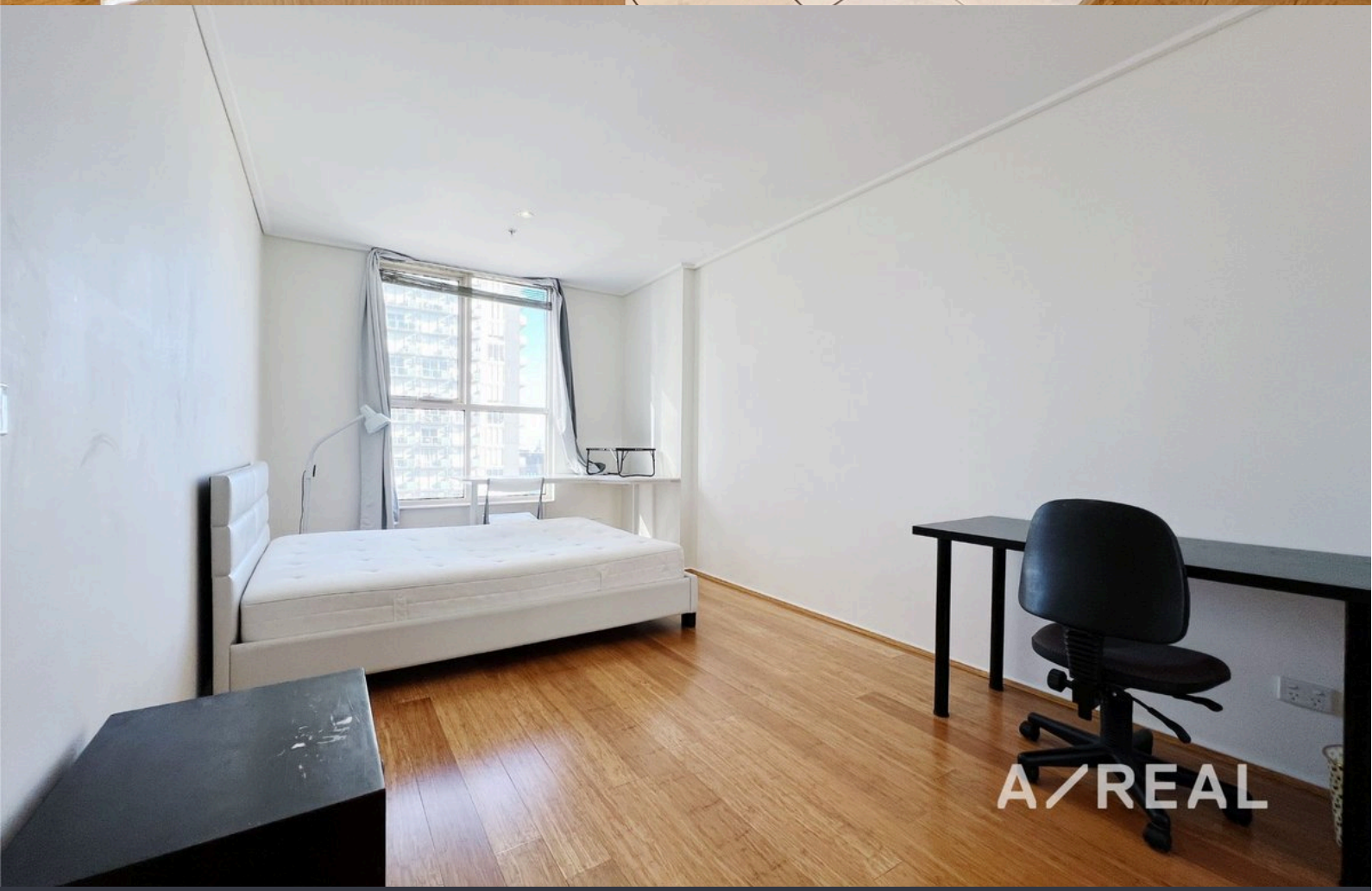


Spacious 3-Bedroom Apartment with car space in the Heart of Melbourne

Scheduling your property inspection is now a breeze! Simply click on the "Book an Inspection" or "Request a Time" button to secure your appointment. You'll instantly receive a confirmation and be kept up-to-date with any alterations or cancellations concerning your scheduled visit. Please be aware, inspections may be subject to cancellation if no bookings are registered. Make your booking today and take the first step in finding your ideal home

Located in the prestigious Dockside Tower, this spacious three-bedroom apartment offers an ideal blend of comfort and convenience in Melbourne's vibrant city centre. Situated equidistant between Flagstaff and Southern Cross Stations, this location provides easy access to major train lines, free trams, the airport SkyBus, as well as outlet shopping and supermarkets, including Coles and the Crown Asian supermarket. Just a short walk away, you'll find some of the city's finest brunch and dinner spots, along with the serene Flagstaff Gardens p...





BOX HILL

Suite 3.4, Level 3, 990 Whitehorse Road, Box Hill. Victoria 3128 | 8686 8388

HAWTHORN EAST

33 Camberwell Road, Hawthorn. Victoria 3123 | 9818 8991

MELBOURNE CBD

Level 7, 99 Queen Street, Melbourne. VIC 3000 | 9818 8991

NORTH

Suites 4 & 5 High Street, Lalor. VIC 3075 | 03 9436 0888

POINT COOK

Entrance C4, Level 1, 2 Main Street, Point Cook. VIC 3030 | 8686 8338

SOUTH MORANG

29 Gorge Road, South Morang. VIC 3752 | 8804 5888

info@areal.com.au