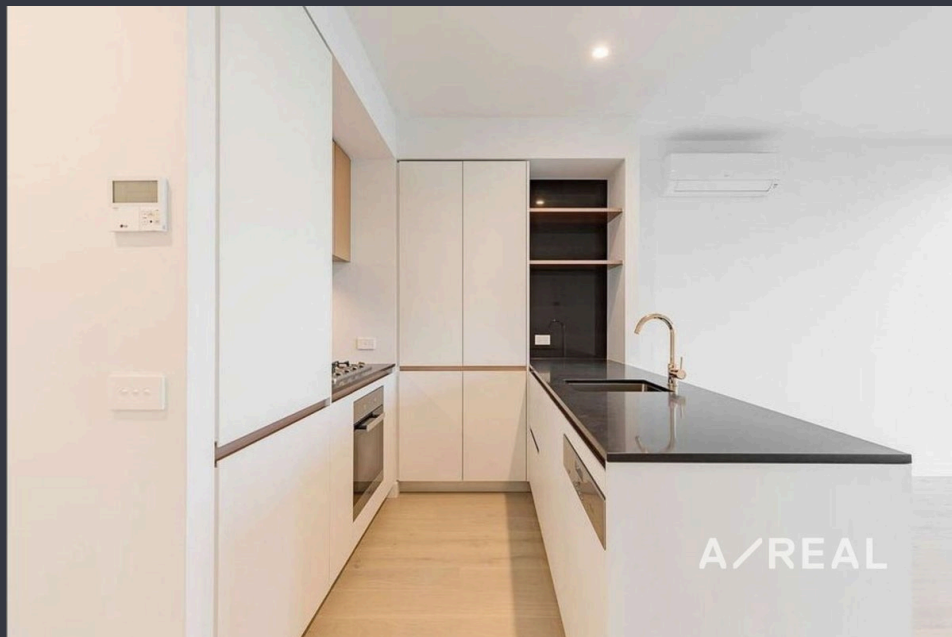


Luxury 1-Bedroom Apartment in Aurora



For Lease

4002/228 La Trobe St Melbourne VIC 3000



\$700 per Week

For Lease

4002/228 La Trobe St Melbourne VIC 3000



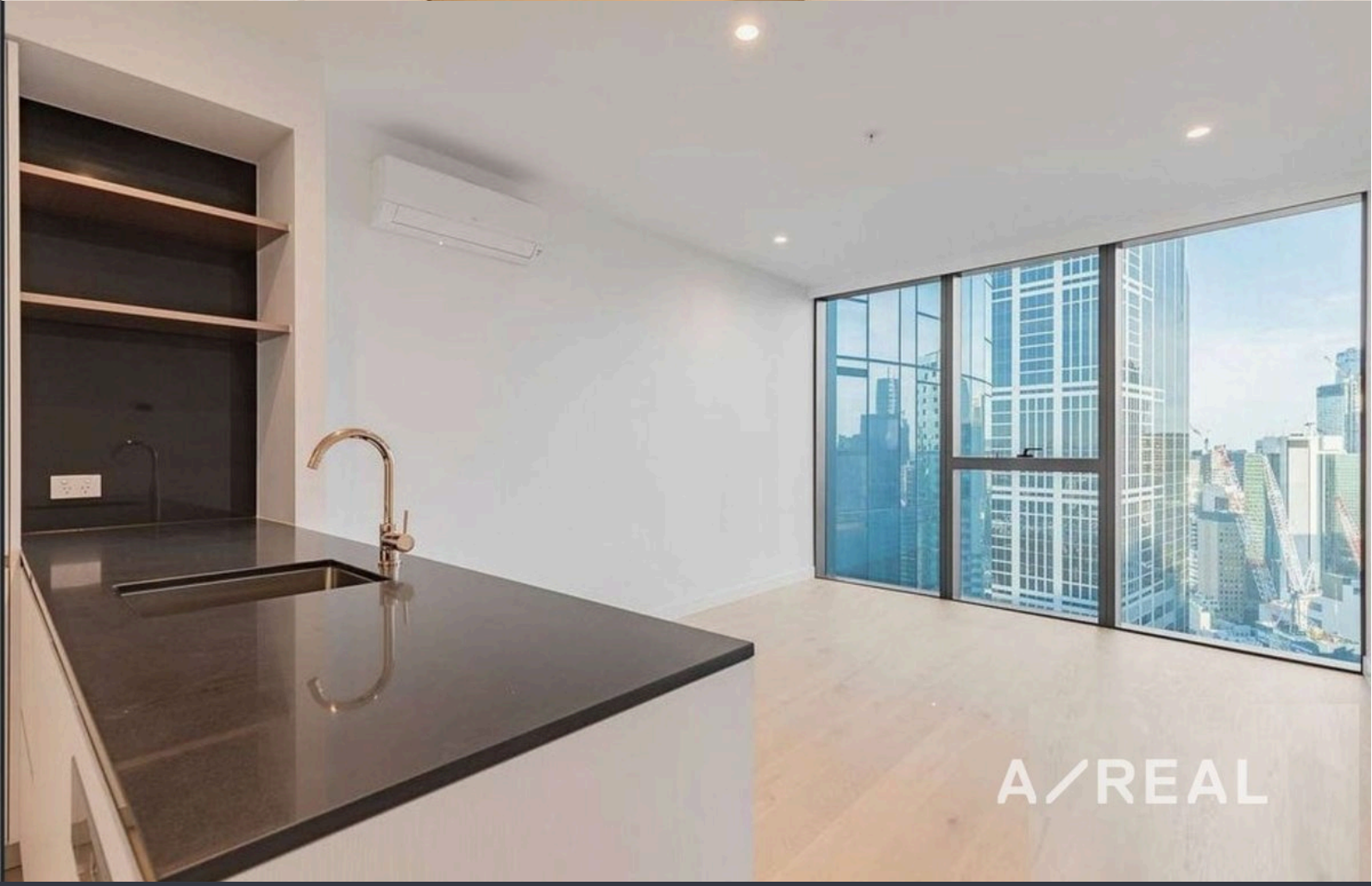
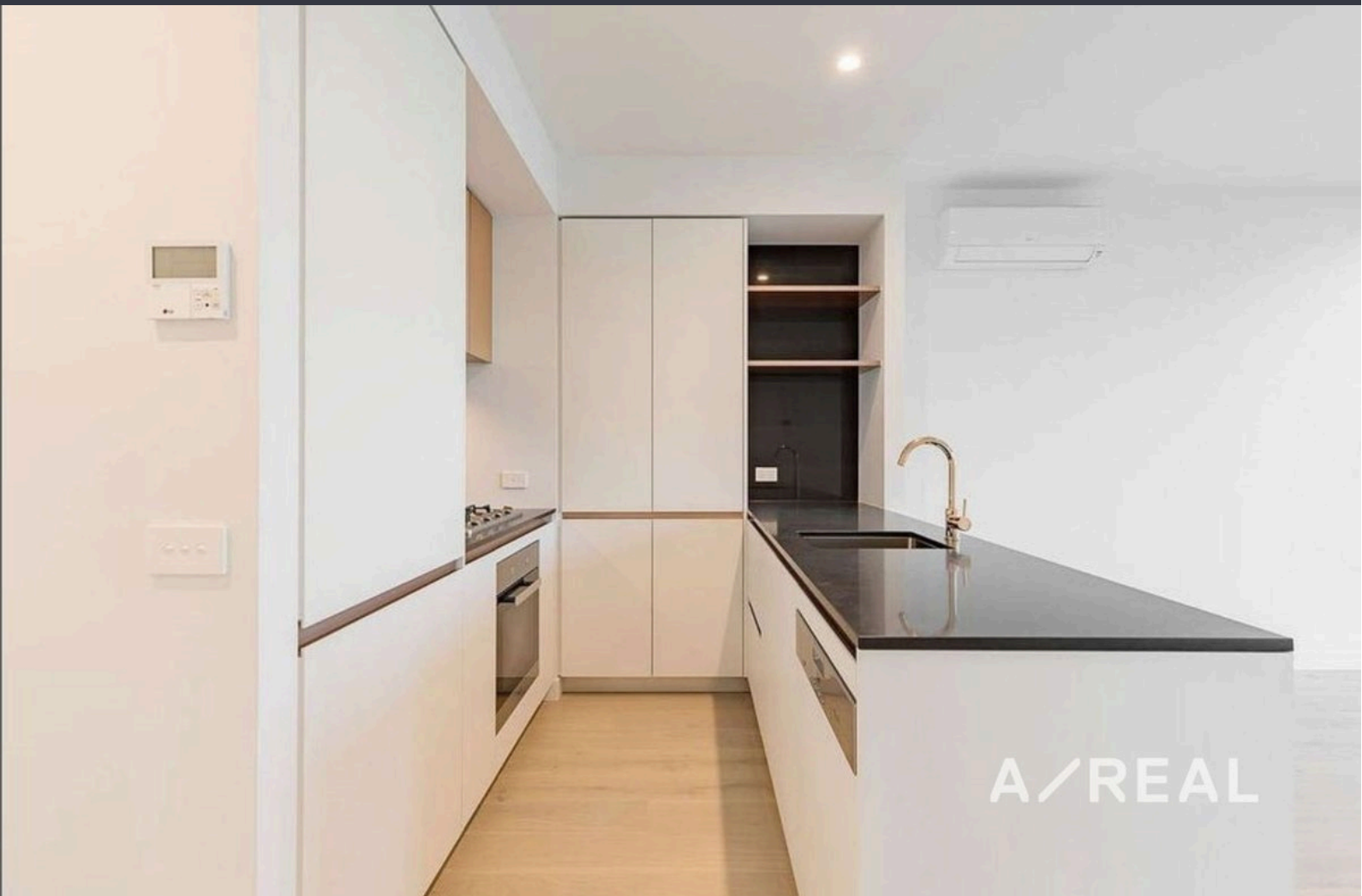
Luxury 1-Bedroom Apartment in Aurora

Discover premium city living in one of Melbourne's most sought-after buildings – Aurora. Located on the 40th floor with direct elevator access to Melbourne Central Shopping Centre and Train Station, this apartment offers unbeatable lifestyle and convenience.

In immaculate condition, this unfurnished 1-bedroom apartment boasts spectacular views through floor-to-ceiling windows. The open-plan living area features timber flooring and a contemporary kitchen with stone benchtops, gas cooktop, oven, dishwasher, and integrated storage with fridge space.

The carpeted bedroom includes built-in robes, and the sleek bathroom comes with floor-to-ceiling tiles and a European laundry. Climate control is taken care of with split-system heating and cooling for year-round comfort.

Residents of Aurora enjoy access to world-class amenities including a 25-metre indoor lap pool, sauna, steam room and jacuzzi. The building also features a sun deck and BBQ area for outdoor entertaining, a fully equipped ...





INSPECTION & APPLICATION PROCESS



VIEW LISTING ONLINE



GET IN TOUCH



ATTEND AN INSPECTION



APPLY ONLINE

Click the “[Register](#)” or “[Book with Inspect Real Estate](#)” button and enter your preferred contact details so that we can keep you up to date with any changes or cancellations to your booking.

If the advertised time does not suit: click “[Get in Touch](#)” or “[Email](#)” to submit your interest in the property. You will then be kept up to date about any future inspections.

[Attend an inspection](#) with one of our Leasing Specialists.

After your inspection, you will receive a link with instructions on how to [apply online via 2Apply](#).

Visit www.2apply.com.au

BOX HILL

Suite 3.4, Level 3, 990 Whitehorse Road, Box Hill. Victoria 3128 | 8686 8388

HAWTHORN EAST

33 Camberwell Road, Hawthorn. Victoria 3123 | 9818 8991

MELBOURNE CBD

Level 7, 99 Queen Street, Melbourne. VIC 3000 | 9818 8991

NORTH

Suites 4 & 5 High Street, Lalor. VIC 3075 | 03 9436 0888

POINT COOK

Entrance C4, Level 1, 2 Main Street, Point Cook. VIC 3030 | 8686 8338

SOUTH MORANG

29 Gorge Road, South Morang. VIC 3752 | 8804 5888

info@areal.com.au