

Virtually inspect NOW with our  
3D scan!



## For Lease

G02/10 Bromham Place, Richmond VIC 3121

 1  1

\$360 per week

## For Lease

G02/10 Bromham Place, Richmond VIC 3121



*Virtually inspect NOW with our 3D scan!*

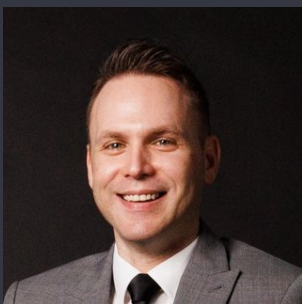
### IMPORTANT COVID-19 INFO REGARDING OPEN HOMES:

Open for Inspection Schedule: Saturday, 9th of January at 10:20 - 10:30 am

Private Inspections are available throughout lockdown. Please call Joshua Hellyer at 0410 656 061 to arrange.

A spacious one bedroom apartment, featuring stylish hardwood timber flooring and ample storage space. The air-conditioned living space is well designed with glass sliding doors opening to your own private balcony creating a spacious open and bright atmosphere that is guaranteed to impress. The carpeted bedroom is generous in size and has built-in robes for your storing needs. The state of the art kitchen has stone bench tops, a tiled splashback, gas appliances and a dishwasher. The apartment also offers a large modern bathroom, with a separate European laundry facility.

Located right near Melbourne's iconic Church Street, just a three-minute walk from Bridge Road. Bridge Road is home to a live and vibrant nightlife for your social needs along with many ...

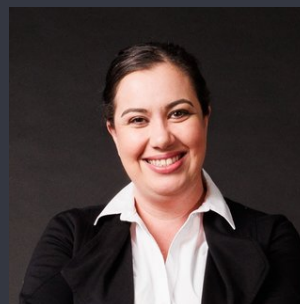


**Joshua Hellyer**

Relationship Manager

03 9818 8991

[joshua.hellyer@areal.com.au](mailto:joshua.hellyer@areal.com.au)



**Lauren Allan**

Leasing Specialist

03 9818 8991

[lauren.allan@areal.com.au](mailto:lauren.allan@areal.com.au)





## BOX HILL

Suite 3.4, Level 3, 990 Whitehorse Road, Box Hill. Victoria 3128 | 8686 8388

## HAWTHORN EAST

33 Camberwell Road, Hawthorn. Victoria 3123 | 9818 8991

## MELBOURNE CBD

Level 7, 99 Queen Street, Melbourne. VIC 3000 | 9818 8991

## NORTH

Suites 4 & 5 High Street, Lalor. VIC 3075 | 03 9436 0888

## POINT COOK

Entrance C4, Level 1, 2 Main Street, Point Cook. VIC 3030 | 8686 8338

## SOUTH MORANG

29 Gorge Road, South Morang. VIC 3752 | 8804 5888

[info@areal.com.au](mailto:info@areal.com.au)