

## Modern Single-Level Living at Its Finest



## For Lease

11 Rangeland Street, Mambourin VIC 3024

 3  2

\$410 per Week

## For Lease

11 Rangeland Street, Mambourin VIC 3024

 3  2

### Modern Single-Level Living at Its Finest

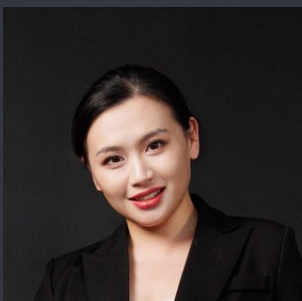
A beautiful example of modern single-level living, this well-designed home offers a perfect combination of style, comfort and practicality.

Inside, the open-plan layout is filled with natural light, creating a welcoming and relaxed atmosphere. The spacious living and dining area flows into a stylish kitchen equipped with quality appliances, a subway-tiled splashback and generous storage.

The master bedroom is privately positioned at the front of the home and features its own ensuite and walk-in robe. Two additional bedrooms with built-in robes, a central bathroom, ducted heating, split system air conditioning, a good-sized backyard and a single garage complete the home.

Located close to Wyndham Vale train station, Greens Road, Manor Lakes shopping centres, Manor Lakes Secondary College, Wyndham Vale Primary School and the Princes Freeway, this home offers both convenience and comfort in a family-friendly setting.

\*\*Scheduling your property inspection is now a breeze! Simply click ...



### Renata Xiang

Business Development Manager

0437 626 898

03 9116 5797

renata.xiang@areal.com.au



A/REAL



## INSPECTION & APPLICATION PROCESS



VIEW LISTING ONLINE



GET IN TOUCH



ATTEND AN INSPECTION



APPLY ONLINE

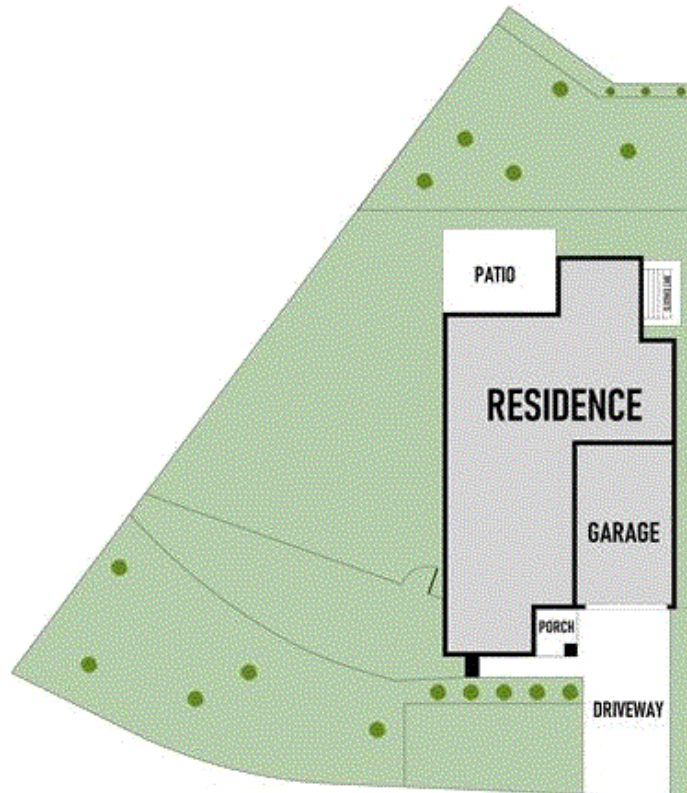
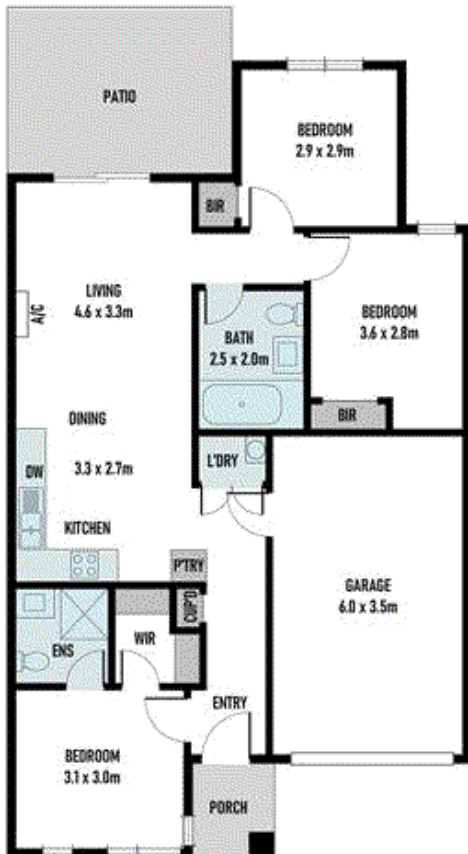
Click the "Register" or "Book with Inspect Real Estate" button and enter your preferred contact details so that we can keep you up to date with any changes or cancellations to your booking.

If the advertised time does not suit: click "Get in Touch" or "Email" to submit your interest in the property. You will then be kept up to date about any future inspections.

Attend an inspection with one of our Leasing Specialists.

After your inspection, you will receive a link with instructions on how to apply online via 2Apply.

Visit [www.2apply.com.au](http://www.2apply.com.au)



## BOX HILL

Suite 3.4, Level 3, 990 Whitehorse Road, Box Hill. Victoria 3128 | 8686 8388

## HAWTHORN EAST

33 Camberwell Road, Hawthorn. Victoria 3123 | 9818 8991

## MELBOURNE CBD

Level 7, 99 Queen Street, Melbourne. VIC 3000 | 9818 8991

## NORTH

Suites 4 & 5 High Street, Lalor. VIC 3075 | 03 9436 0888

## POINT COOK

Entrance C4, Level 1, 2 Main Street, Point Cook. VIC 3030 | 8686 8338

## SOUTH MORANG

29 Gorge Road, South Morang. VIC 3752 | 8804 5888

[info@areal.com.au](mailto:info@areal.com.au)