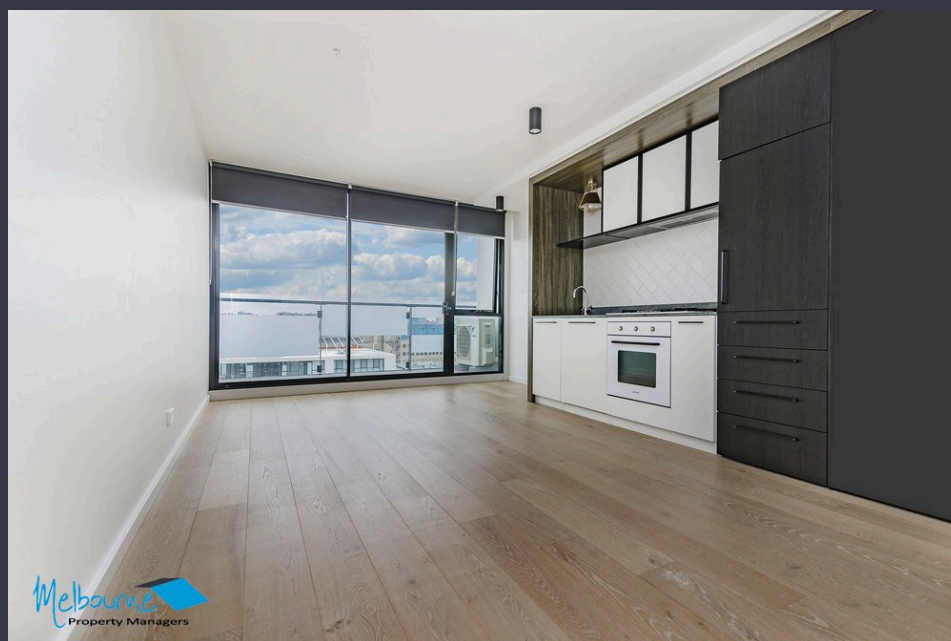


Virtually inspect NOW with our
3D scan!



For Lease

914A/1 Shamrock Street, Abbotsford VIC 3067

 1  1

\$295 per Week

For Lease

914A/1 Shamrock Street, Abbotsford VIC 3067



Virtually inspect NOW with our 3D scan!

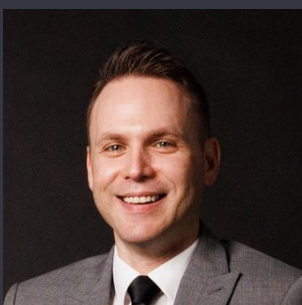
IMPORTANT COVID-19 INFO REGARDING OPEN HOMES:

Open for Inspection Schedule: Thursday, 28th of January at 1:35 - 1:50 pm

Saturday, 30th of January at 2:20 - 2:30 pm

Private Inspections also available. Please call Joshua Hellyer at 0410 656 061 to arrange. The only prerequisite is that you have viewed the 360 3D tour available by pressing the play/3D button above.

A great 1 bedroom apartment featuring stylish hardwood timber flooring and ample storage space. The air-conditioned living space is well designed and light fitted with floor to ceiling windows and glass sliding doors opening to your own private balcony creating a spacious, open and bright atmosphere that is guaranteed to impress. The carpeted bedroom is generous in size and has built in robes. The state of the art kitchen has stone bench tops, tiled splash-backs, gas appliances and a dishwasher. The apartment offers a large modern bathroom, with separate European laundry facil...

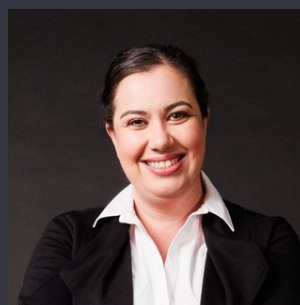


Joshua Hellyer

Relationship Manager

03 9818 8991

joshua.hellyer@areal.com.au



Lauren Allan

Leasing Specialist

03 9818 8991

lauren.allan@areal.com.au



A / REAL



Melbourne
Property Managers



Melbourne
Property Managers

BOX HILL

Suite 3.4, Level 3, 990 Whitehorse Road, Box Hill. Victoria 3128 | 8686 8388

HAWTHORN EAST

33 Camberwell Road, Hawthorn. Victoria 3123 | 9818 8991

MELBOURNE CBD

Level 7, 99 Queen Street, Melbourne. VIC 3000 | 9818 8991

NORTH

Suites 4 & 5 High Street, Lalor. VIC 3075 | 03 9436 0888

POINT COOK

Entrance C4, Level 1, 2 Main Street, Point Cook. VIC 3030 | 8686 8338

SOUTH MORANG

29 Gorge Road, South Morang. VIC 3752 | 8804 5888

info@areal.com.au