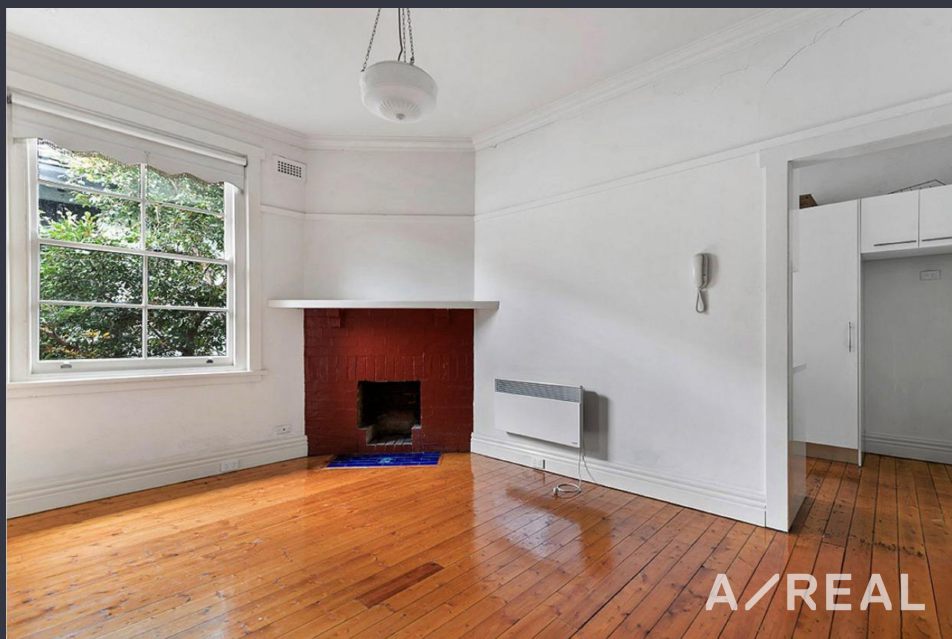


## One Bedroom apartment in very convenient Location



## For Lease

09/21-23 Hotham Street, East Melbourne VIC 3002

 1    1

\$475 per Week

## For Lease

09/21-23 Hotham Street, East Melbourne VIC 3002

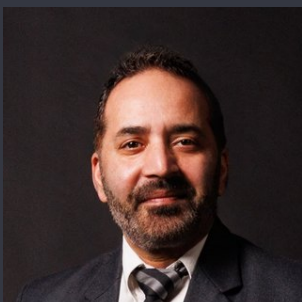


### One Bedroom apartment in very convenient Location

\*\*Scheduling your property inspection is now a breeze! Simply click on the "Book an Inspection" or "Request a Time" button to secure your appointment. You'll instantly receive a confirmation and be kept up-to-date with any alterations or cancellations concerning your scheduled visit. Please be aware, inspections may be subject to cancellation if no bookings are registered. Make your booking today and take the first step in finding your ideal home\*\*

The Beverley Mansions – An Art Deco building of only 13 residences, this updated and well-maintained apartment has instant appeal.

Brilliantly situated in one of East Melbourne's most desirable streets, close to every convenience, this spacious light filled single bedroom apartment in the unique Beverly Mansions complex with polished Baltic pine timber floors, towering ceilings and a tastefully neutral colour palate, this home blend its exquisite heritage with clean lines and pretty leafy outlooks as it promises a unique blend of inner-ci...



**Ranjit Singh**

Relationship Manager

0428 945 041

03 9818 8991

ranjit.singh@areal.com.au

A/REAL







## INSPECTION & APPLICATION PROCESS



VIEW LISTING ONLINE



GET IN TOUCH



ATTEND AN INSPECTION



APPLY ONLINE

Click the “[Register](#)” or “[Book with Inspect Real Estate](#)” button and enter your preferred contact details so that we can keep you up to date with any changes or cancellations to your booking.

If the advertised time does not suit: click “[Get in Touch](#)” or “[Email](#)” to submit your interest in the property. You will then be kept up to date about any future inspections.

[Attend an inspection](#) with one of our Leasing Specialists.

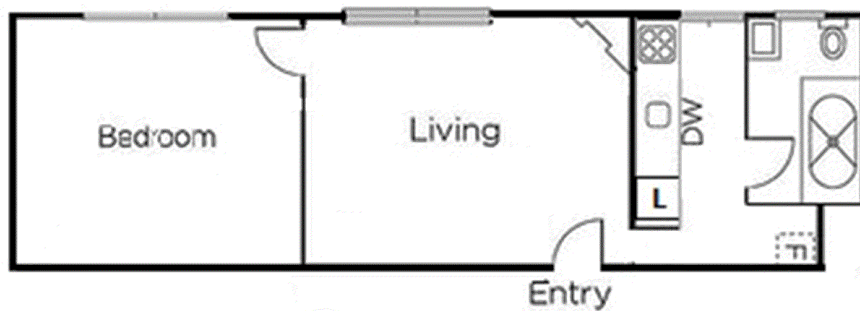
After your inspection, you will receive a link with instructions on how to [apply online via 2Apply](#).

Visit [www.2apply.com.au](http://www.2apply.com.au)





# UNFURNISHED PROPERTY





#### BOX HILL

Suite 3.4, Level 3, 990 Whitehorse Road, Box Hill. Victoria 3128 | 8686 8388

#### HAWTHORN EAST

33 Camberwell Road, Hawthorn. Victoria 3123 | 9818 8991

#### MELBOURNE CBD

Level 7, 99 Queen Street, Melbourne. VIC 3000 | 9818 8991

#### POINT COOK

Entrance C4, Level 1, 2 Main Street, Point Cook. VIC 3030 | 8686 8338

#### SOUTH MORANG

29 Gorge Road, South Morang. VIC 3752 | 8804 5888

[info@areal.com.au](mailto:info@areal.com.au)

[areal.com.au](https://areal.com.au)