

Modern Family Favourite On A Coveted Corner



For Sale

5 Andelana Avenue, Wheelers Hill VIC 3150

 3  1  675sqm

Contact Agent

For Sale

5 Andelana Avenue, Wheelers Hill VIC 3150

 3  1  675sqm

Modern Family Favourite On A Coveted Corner

Presenting the perfect blend of enduring comfort, modern spaces and future potential, this immaculate home is sure to captivate family buyers, new home builders and developers.

Sitting on a prime corner allotment of 675sqm (approx), the impeccably presented dual-zoned interior offers a sun-filled living/dining area and tidy kitchen/meals, complemented by 3 bedrooms and stylish bathroom. Further enhanced by ducted heating, wall AC and double garage, this inviting home also delivers exciting options to further renovate/extend, build your dream home or multiple townhouses (STCA), capitalising on dual street frontages.

Superbly situated in a family-friendly locale, walking distance to Wheelers Hill Secondary, Brandon Park Primary, Waverley Meadows Primary, Lum Reserve and buses, and close to Brandon Park Shopping Centre, Caulfield Grammar and Monash/EastLink Freeways.

Disclaimer: We have in preparing the content used our best endeavours to ensure that the information contained is true ...



Jason Low

Director, Licensed Estate Agent

0468 958 332

03 9818 8991

jason.low@areal.com.au



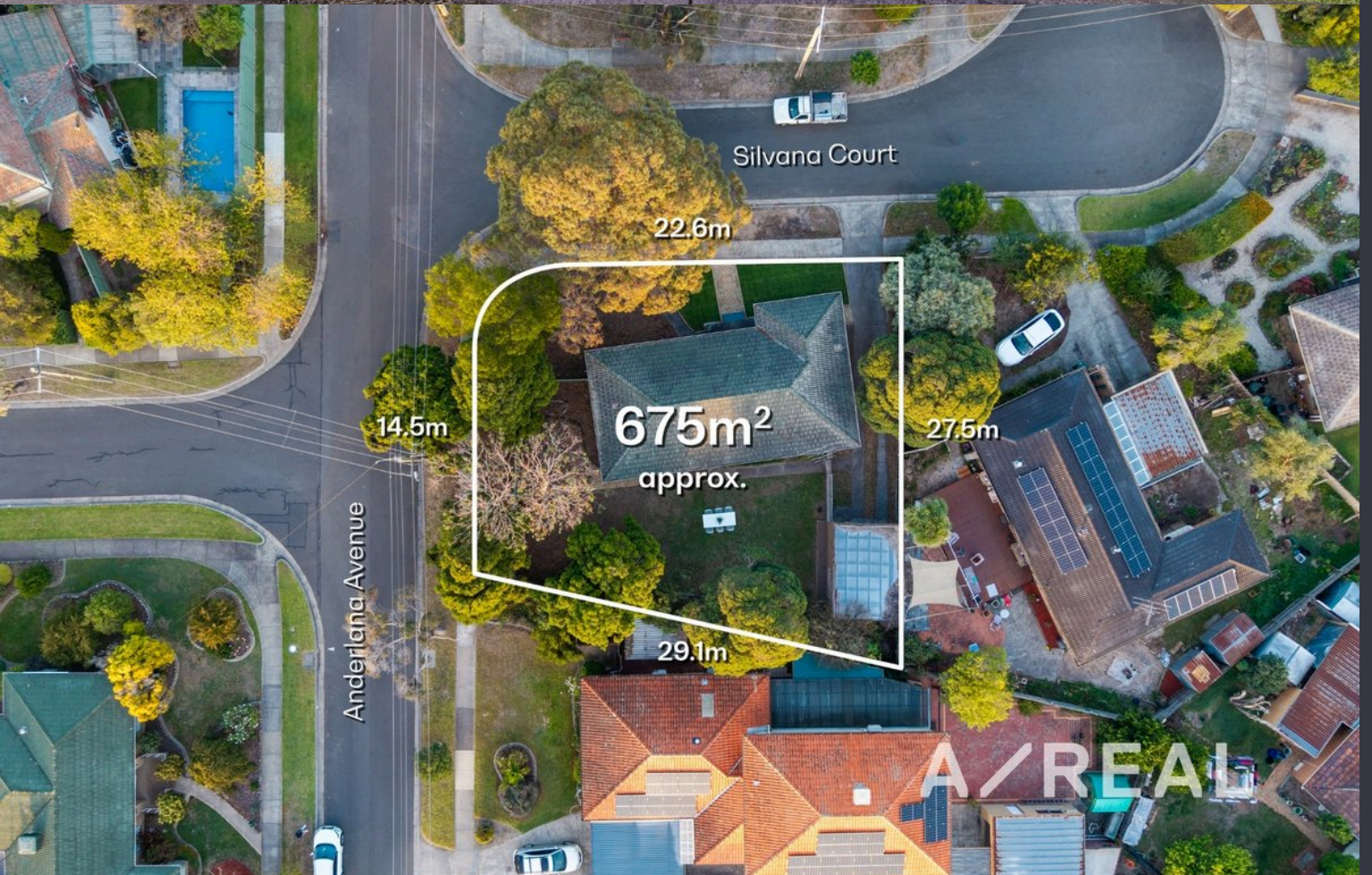
Warren Tate

Head of Sales, Licensed Estate Agent, Auctioneer

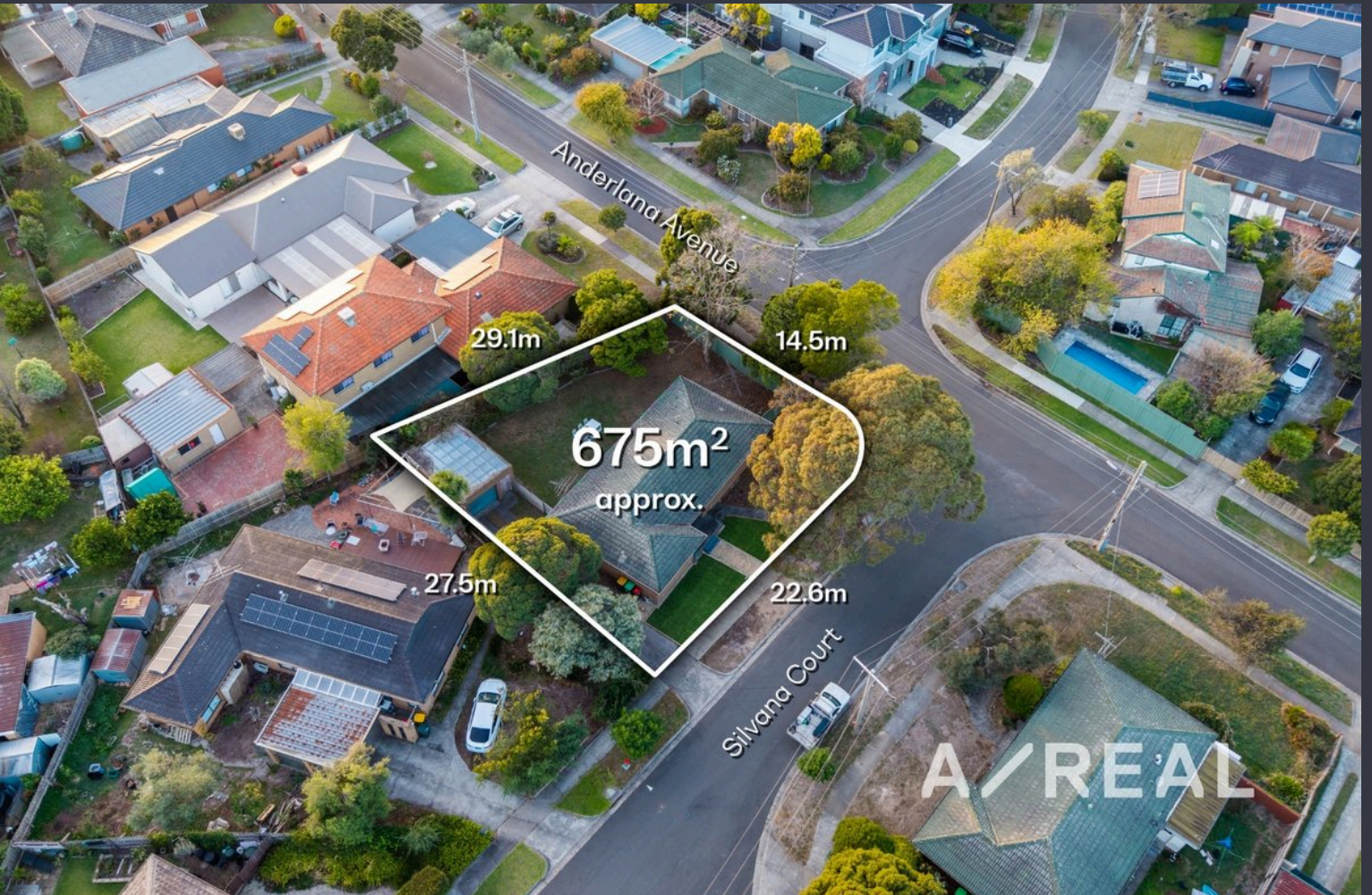
0412 328 072

03 9818 8991

warren.tate@areal.com.au

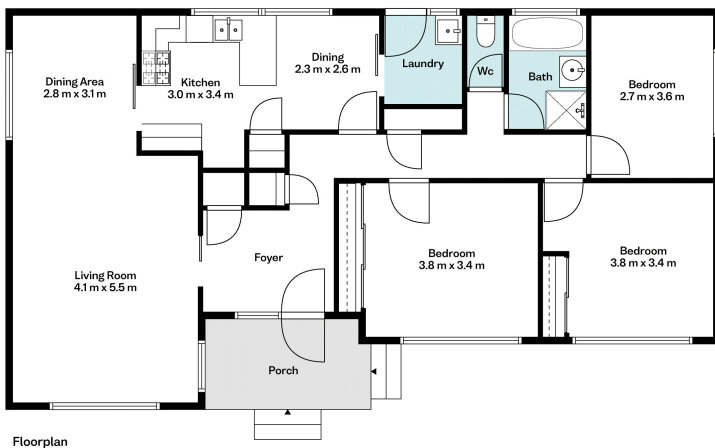


A/REAL





Land Size: 675m²
(approx.)



BOX HILL

Suite 3.4, Level 3, 990 Whitehorse Road, Box Hill. Victoria 3128 | 8686 8388

HAWTHORN EAST

33 Camberwell Road, Hawthorn. Victoria 3123 | 9818 8991

MELBOURNE CBD

Level 7, 99 Queen Street, Melbourne. VIC 3000 | 9818 8991

NORTH

Suites 4 & 5 High Street, Lalor. VIC 3075 | 03 9436 0888

POINT COOK

Entrance C4, Level 1, 2 Main Street, Point Cook. VIC 3030 | 8686 8338

SOUTH MORANG

29 Gorge Road, South Morang. VIC 3752 | 8804 5888

info@areal.com.au

areal.com.au