

Stylish Family Living with Exceptional Space and Comfort



For Lease

133 Clarendon Drive, Keysborough VIC 3173

 4  2

\$850 per Week

For Lease

133 Clarendon Drive, Keysborough VIC 3173

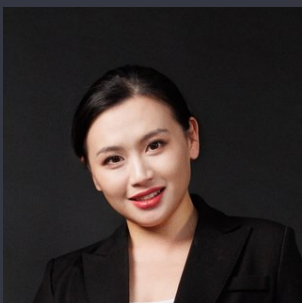
 4  2

Stylish Family Living with Exceptional Space and Comfort

Scheduling your property inspection is now a breeze! Simply click on the "Book an Inspection" or "Request a Time" button to secure your appointment. You'll instantly receive a confirmation and be kept up-to-date with any alterations or cancellations concerning your scheduled visit. Please be aware, inspections may be subject to cancellation if no bookings are registered. Make your booking today and take the first step in finding your ideal home

This beautifully presented four-bedroom, two-bathroom home offers the perfect combination of space, comfort, and convenience in a highly sought-after, family-friendly location. With multiple living zones and a seamless indoor-outdoor flow, the home is ideal for those looking to enjoy both relaxed day-to-day living and easy entertaining.

At the front of the home, the main bedroom provides a peaceful retreat, complete with dual walk-in robes and a luxurious ensuite featuring a double vanity and high-end finishes. Three additional bedrooms, ...



Renata Xiang

Business Development Manager

0437 626 898

03 9116 5797

renata.xiang@areal.com.au

A/REAL



A/REAL



INSPECTION & APPLICATION PROCESS



VIEW LISTING ONLINE



GET IN TOUCH



ATTEND AN INSPECTION



APPLY ONLINE

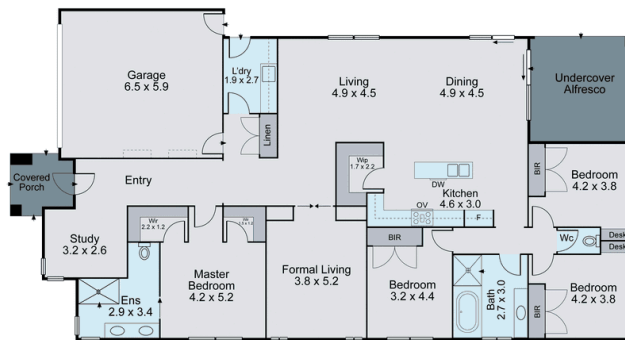
Click the “Register” or “Book with Inspect Real Estate” button and enter your preferred contact details so that we can keep you up to date with any changes or cancellations to your booking.

If the advertised time does not suit: click “Get in Touch” or “Email” to submit your interest in the property. You will then be kept up to date about any future inspections.

Attend an inspection with one of our Leasing Specialists.

After your inspection, you will receive a link with instructions on how to apply online via 2Apply.

Visit www.2apply.com.au



Ground Floor



Siteplan

BOX HILL

Suite 3.4, Level 3, 990 Whitehorse Road, Box Hill. Victoria 3128 | 8686 8388

HAWTHORN EAST

33 Camberwell Road, Hawthorn. Victoria 3123 | 9818 8991

MELBOURNE CBD

Level 7, 99 Queen Street, Melbourne. VIC 3000 | 9818 8991

NORTH

Suites 4 & 5 High Street, Lalor. VIC 3075 | 03 9436 0888

POINT COOK

Entrance C4, Level 1, 2 Main Street, Point Cook. VIC 3030 | 8686 8338

SOUTH MORANG

29 Gorge Road, South Morang. VIC 3752 | 8804 5888

info@areal.com.au