

# A/REAL

IT DOESNT GET ANY MORE  
ATTRACTIVE THAN ATRIA! 1  
bedroom apartment -BE  
QUICK ONLY WONT LAST!



## For Lease

519/2 Golding Street, Hawthorn VIC 3122

🛏 1 🚿 1

\$350 per Week

## For Lease

519/2 Golding Street, Hawthorn VIC 3122



**IT DOESNT GET ANY MORE ATTRACTIVE THAN ATRIA! 1 bedroom apartment - BE QUICK ONLY WONT LAST!**

To APPLY, you must INSPECT the property FIRST. Its easy, simply click on EMAIL AGENT, enter your details and receive instant details of the next inspection time.

Please register to inspect this property. When inspection times are scheduled/changed or the property is no longer available, only those registered will be advised.

Looking to establish yourself in Hawthorn?

Featuring premium fittings and fixtures throughout, stylish mixtures of carpet and floorboards, great sized living spaces with plenty of natural light, bedroom with BIRs and a study desk, fully equipped kitchens with stone bench tops and stainless steel European appliances, Sparkling modern bathrooms, European laundry and floor to ceiling glass doors leading to ample balcony boasting spectacular views.

Building facilities include secured entry, two luxurious lobbies complete with high ceilings and warm lighting, on site building management, bicycle racks, secure car parking and storage cages and last but not least t...

A/REAL







## ATRIA

APARTMENTS HAWTHORN  
www.atria.com.au

Level	L05
Apartment Number	G5.19
No. of Bedrooms	1
No. of Bathrooms	1
Estimated Area	
Floor Area	41 m <sup>2</sup>
Balcony Area	7 m <sup>2</sup>
Total Area	48 m <sup>2</sup>
Car Space	1

Developed By:



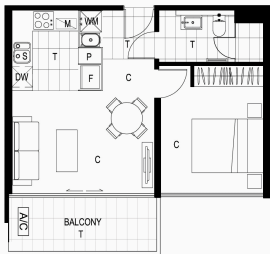
**CAYDON**  
T + 613 9416 3400  
F + 613 9416 3404  
34 STANLEY STREET  
COLLINGWOOD VIC 3066  
[www.caydon.com.au](http://www.caydon.com.au)

Key Plan

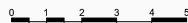


Dimensions and areas are approximate and are subject to change. Internal measurements are taken from centreline of party walls and external face of the outside wall. Prospective purchasers must rely on their own enquiries and should refer to plans, terms and conditions in the contract of sale. Loose furniture, white goods and planters represented are not included.

F = Fridge  
P = Pantry  
S = Sink  
DW = Dishwasher  
M = Microwave  
L = Linen  
WM = Washing Machine  
ST = Study  
A/C = Airconditioner  
T = Tile  
C = Carpet  
HW = Highlight Window



WARDROBE STORAGE SYSTEM



## BOX HILL

Suite 3.4, Level 3, 990 Whitehorse Road, Box Hill. Victoria 3128 | 8686 8388

## HAWTHORN EAST

33 Camberwell Road, Hawthorn. Victoria 3123 | 9818 8991

## MELBOURNE CBD

Level 7, 99 Queen Street, Melbourne. VIC 3000 | 9818 8991

## NORTH

Suites 4 & 5 High Street, Lalor. VIC 3075 | 03 9436 0888

## POINT COOK

Entrance C4, Level 1, 2 Main Street, Point Cook. VIC 3030 | 8686 8338

## SOUTH MORANG

29 Gorge Road, South Morang. VIC 3752 | 8804 5888

[info@areal.com.au](mailto:info@areal.com.au)