

Stunning 1 bedroom apartment in the beautiful Atria Complex!



For Lease

120/311 Burwood Road, Hawthorn VIC 3122

 1  1

\$350 per Week

For Lease

120/311 Burwood Road, Hawthorn VIC 3122



Stunning 1 bedroom apartment in the beautiful Atria Complex!

To APPLY, you must INSPECT the property FIRST. Its easy, simply click on EMAIL AGENT, enter your details and receive instant details of the next inspection time.

Please register to inspect this property. When inspection times are scheduled/changed or the property is no longer available, only those registered will be advised.

Looking to establish yourself in Hawthorn? Luxury apartments that really do tick all the boxes!

Featuring premium fittings and fixtures throughout, stylish mixtures of carpet and floorboards, great sized living spaces with plenty of natural light, bedroom with BIRs, fully equipped kitchen with stone bench tops and stainless steel European appliances, Sparkling modern bathroom, European laundry and floor to ceiling glass doors leading to ample balcony boasting spectacular views.

Building facilities include secured entry, two luxurious lobbies complete with high ceilings and warm lighting, on site building management, bicycle racks, secure car parking and stora...

A/REAL



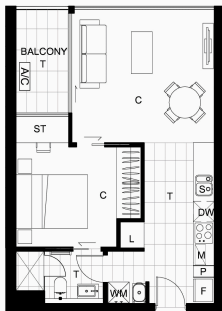
A / REAL





ATRIA

APARTMENTS HAWTHORN
www.atria.com.au



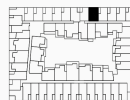
Level	L01
Apartment Number	B1.20
No. of Bedrooms	1
No. of Bathrooms	1
Estimated Area	
Floor Area	- 48 m ²
Balcony Area	- 5 m ²
Total Area	- 53 m ²
Car Space	1

Developed By:



CAYDON
T + 613 9416 3400
F + 613 9416 3404
34 STANLEY STREET
COLLINGWOOD VIC 3066
www.caydon.com.au

Key Plan



Dimensions and areas are approximate and are subject to change. Internal measurements are taken from centerline of party walls and external face of the outside wall. Prospective purchasers must rely on their own enquiries and should refer to plans, terms and conditions in the contract of sale. Loose furniture, white goods and planters represented are not included.

F = Fridge
P = Pantry
S = Sink
DW = Dishwasher
M = Microwave
L = Linen
WM = Washing Machine
ST = Study
A/C = Airconditioner
T = Tile
C = Carpet
HW = Highlight Window



WARDROBE STORAGE SYSTEM



BOX HILL

Suite 3.4, Level 3, 990 Whitehorse Road, Box Hill. Victoria 3128 | 8686 8388

HAWTHORN EAST

33 Camberwell Road, Hawthorn. Victoria 3123 | 9818 8991

MELBOURNE CBD

Level 7, 99 Queen Street, Melbourne. VIC 3000 | 9818 8991

NORTH

Suites 4 & 5 High Street, Lalor. VIC 3075 | 03 9436 0888

POINT COOK

Entrance C4, Level 1, 2 Main Street, Point Cook. VIC 3030 | 8686 8338

SOUTH MORANG

29 Gorge Road, South Morang. VIC 3752 | 8804 5888

info@areal.com.au