


As New 1 bedroom spacious &
lightfilled apartment.

Inspection: Sat 21.02.2015 at
9:00 - 9:20am



For Lease

316/14 Elizabeth Street, Malvern VIC 3144

 1  1

\$370 per Week

For Lease

316/14 Elizabeth Street, Malvern VIC 3144



As New 1 bedroom spacious & lightfilled apartment. Inspection: Sat 21.02.2015 at 9:00 - 9:20am

Inspection: Saturday 21.02.2015 at 9:00 - 9:20am

Are you a great Senior Property Manager? Join us today !!

We have a 2pm NEXT DAY GUARANTEE that you will know if your application has been approved*
Conditions Apply

Ultra modern 1 bedroom apartment in one of Melbourne most desired locations.

Features include:

AS NEW kitchen

Ample cupboard space

Stainless steel gas cooking appliances

Dishwasher

Stone benchtops

Glass splashbacks

AS NEW bathroom

Stunning frameless shower

Ultra modern styling

European laundry inside the apartment

Open plan living area
Split system heating and cooling
Private balcony
Impressive views

Additional features include:

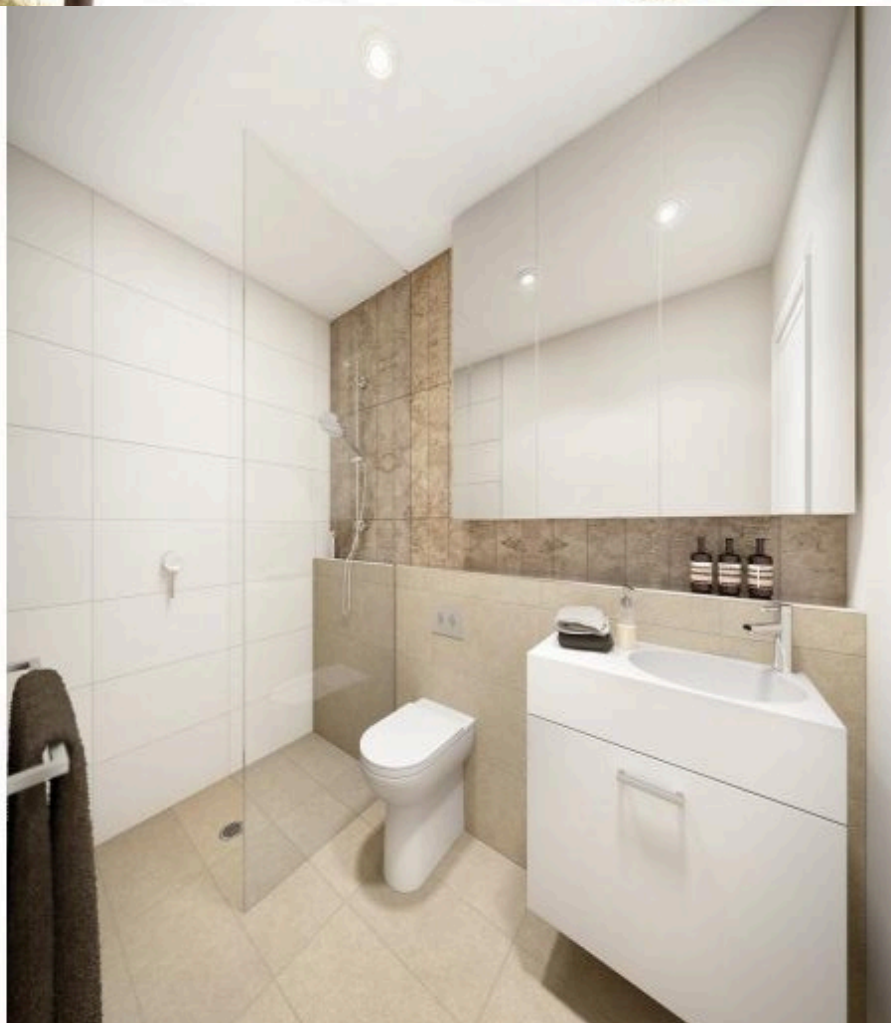
All residents have access to the 2 x communal gardens, Theatre/Library and Private Gym
Storage cage for all apartments
Basement car space for all apartments
Visitor car parks available
Holland Blinds included
Swipe card access to all foyers and lifts
Video intercom system

Located within walking distance of Tooronga Train Station, Glenfe...

A/REAL



A/REAL



BOX HILL

Suite 3.4, Level 3, 990 Whitehorse Road, Box Hill. Victoria 3128 | 8686 8388

HAWTHORN EAST

33 Camberwell Road, Hawthorn. Victoria 3123 | 9818 8991

MELBOURNE CBD

Level 7, 99 Queen Street, Melbourne. VIC 3000 | 9818 8991

NORTH

Suites 4 & 5 High Street, Lalor. VIC 3075 | 03 9436 0888

POINT COOK

Entrance C4, Level 1, 2 Main Street, Point Cook. VIC 3030 | 8686 8338

SOUTH MORANG

29 Gorge Road, South Morang. VIC 3752 | 8804 5888

info@areal.com.au