

Double storey property in
Precinct! Inspection: Saturday
14th March 2015 at 10:10 -
10:30am.



For Lease

105/5 Flockhart Street, Abbotsford VIC 3067

 1  1

\$405 per Week

For Lease

105/5 Flockhart Street, Abbotsford VIC 3067



Double storey property in Precinct! Inspection: Saturday 14th March 2015 at 10:10 - 10:30am.

Inspection: Saturday 14th March 2015 at 10:10 - 10:30am.

We have a 2pm NEXT DAY GUARANTEE that you will know if your application has been approved*
Conditions Apply

To APPLY, you must INSPECT the property FIRST. Its easy, simply click on EMAIL AGENT, enter your details and receive instant details of the next inspection time.

Please register to inspect this property. When inspection times are scheduled/changed or the property is no longer available, only those registered will be advised

Private inspections also available - Please contact me to arrange!

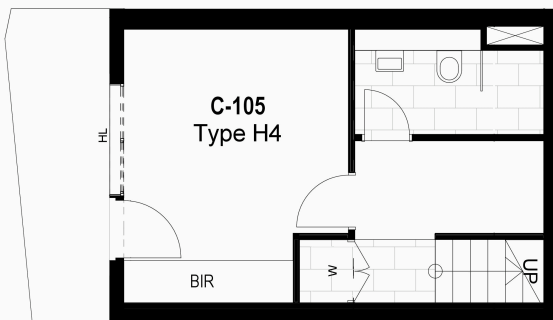
As a tenant of Precinct you will enjoy the use of a communal gym, pool and 3 x communal outdoor areas, all conveniently located on site. You can also enjoy the benefits of having a café in the building as well as First Choice Liquor Store on the ground floor. The complex also has a five story child care centre located at site for your convenience!

This elegantly designed double storey one bedroom apartment comprises of a modern ...



A/REAL



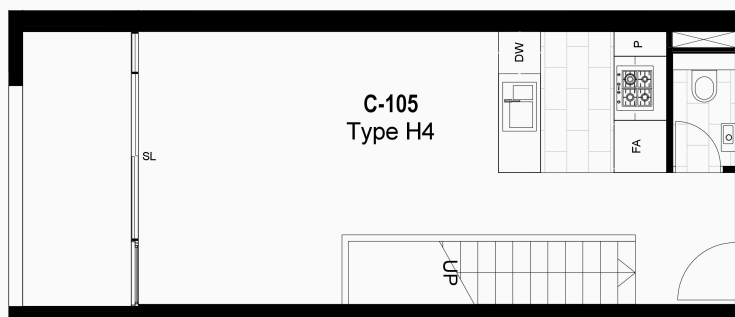


LOWER LEVEL
(Ground Level)

COLOUR SCHEME
LIGHT

REVERSE CYCLE
AIR CONDITIONING
TO LIVING ROOM

(CONDENSER ON BALCONY)



UPPER LEVEL
(Level 01)

LEGEND

- SL SLIDING DOOR
- FA FRIDGE ALCOVE
- DW DISHWASHER
- P PANTRY
- LC LAUNDRY CLOSET
- BIR BUILT IN ROBES
- SH SHOWER
- BAL BALCONY
- HL HIGHLIGHT WINDOW

PLEASE NOTE: Dimensions and areas are approximate and are subject to change without notice. Internal measurements are taken from centreline of party walls, external face of corridors and the external face of the outside walls. Prospective purchasers must rely on their own enquiries and should refer to Annexure 4 (Drawings and Specifications) of the Contract of Sale. Loose furniture, whitegoods and planters are not included. The type of floor finishes and the area to which floor finishes are applied may vary.

BOX HILL

Suite 3.4, Level 3, 990 Whitehorse Road, Box Hill. Victoria 3128 | 8686 8388

HAWTHORN EAST

33 Camberwell Road, Hawthorn. Victoria 3123 | 9818 8991

MELBOURNE CBD

Level 7, 99 Queen Street, Melbourne. VIC 3000 | 9818 8991

NORTH

Suites 4 & 5 High Street, Lalor. VIC 3075 | 03 9436 0888

POINT COOK

Entrance C4, Level 1, 2 Main Street, Point Cook. VIC 3030 | 8686 8338

SOUTH MORANG

29 Gorge Road, South Morang. VIC 3752 | 8804 5888

info@areal.com.au