

Open the doors to potential in  
AAA location – this 1930s gem  
has abundant charm and  
endless opportunity.



## For Sale

424 Tooronga Road, Hawthorn East VIC 3123

 3  1  711sqm

Contact Agent

## For Sale

424 Tooronga Road, Hawthorn East VIC 3123

 3  1  711sqm

Open the doors to potential in AAA location – this 1930s gem has abundant charm and endless opportunity.

This residence, built in 1930, exudes the timeless charm of its era. This home beautifully encapsulates the elegance of its original construction, featuring ornate ceilings, polished timber floors, high ceilings period-style picture railing and an ornamental feature fireplace.

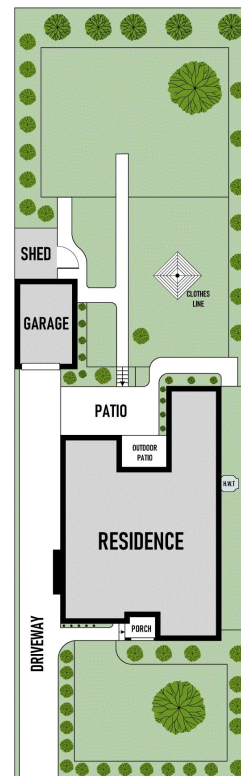
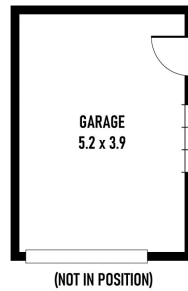
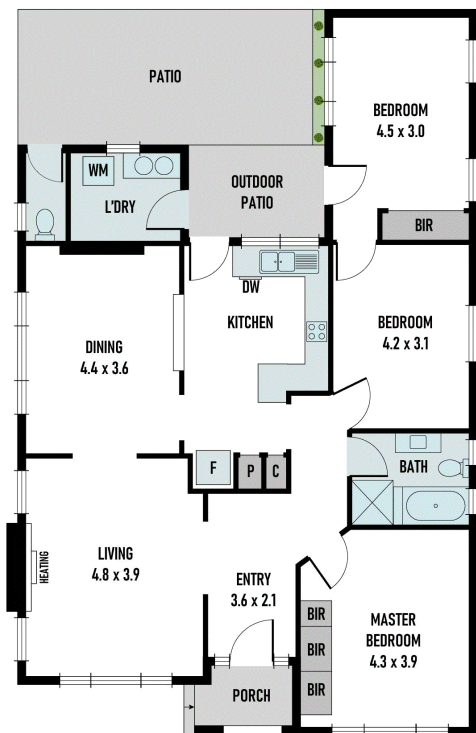
With a generous land size, this property offers immense potential for renovation, extension, or redevelopment possibilities (STCA). The canvas is yours to create your dream home.

- Plans for 4 townhouses development (Endorsed by council)
- Valid Planning Permit until 2025
- Multiple development and subdivide options (STCA) - 2 townhouses, 4 townhouses or 1 large family home

Situated in a prime location, you'll enjoy the convenience of multiple schools, parks, and excellent transport options at your doorstep. This address seamlessly combines comfort and convenience. Nearby schools, such as Hawthorn Primary School and St. James College. Proximity to parks and recreational areas. Easy access to Tooronga Train ...







## BOX HILL

Suite 3.4, Level 3, 990 Whitehorse Road, Box Hill. Victoria 3128 | 8686 8388

## HAWTHORN EAST

33 Camberwell Road, Hawthorn. Victoria 3123 | 9818 8991

## MELBOURNE CBD

Level 7, 99 Queen Street, Melbourne. VIC 3000 | 9818 8991

## NORTH

Suites 4 & 5 High Street, Lalor. VIC 3075 | 03 9436 0888

## POINT COOK

Entrance C4, Level 1, 2 Main Street, Point Cook. VIC 3030 | 8686 8338

## SOUTH MORANG

29 Gorge Road, South Morang. VIC 3752 | 8804 5888

[info@areal.com.au](mailto:info@areal.com.au)