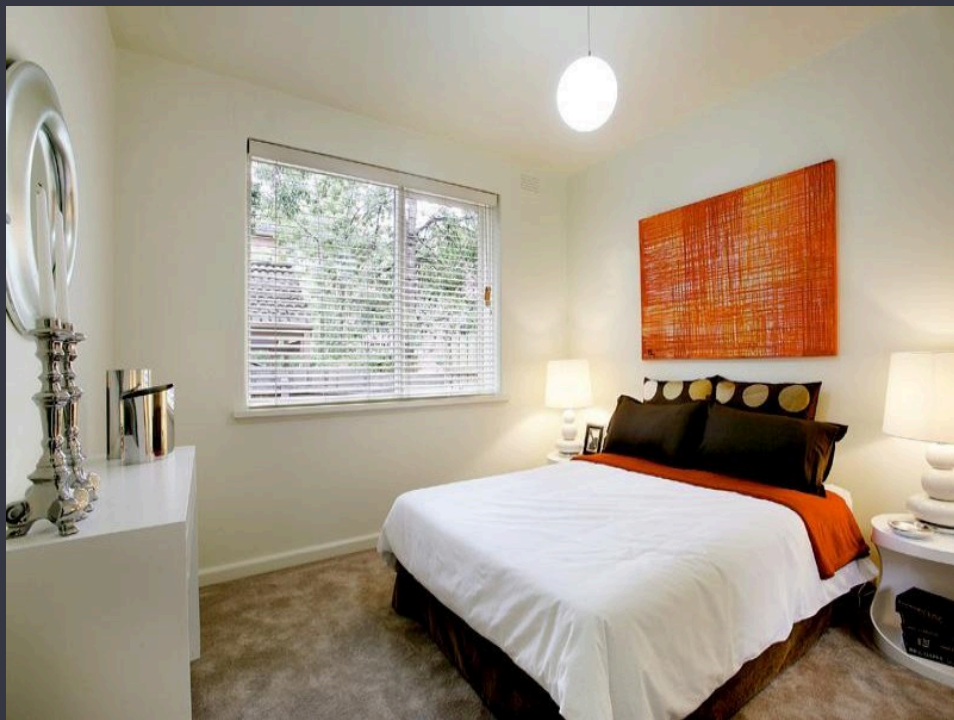


A/REAL

This could be the last property
you will need to see! You will
buy it!



For Sale

4/29 Elphin Grove, Hawthorn VIC 3122

 2  1

\$469,000.00

For Sale

4/29 Elphin Grove, Hawthorn VIC 3122



This could be the last property you will need to see! You will buy it!

This Ground Floor 2 Bedroom Rear Apartment is Suburb Value.

Boasting an array of features including:

Separate Kitchen and Lounge

Brand new modern Kitchen including Dishwasher, Stainless Steel Appliances, Stone Benches.

Oversized bedrooms with BIRs

Ultra Modern Bathroom and Separate Toilet

Separate Laundry Facilities Off street Parking, Security Entrance.

Massive Depreciation, High Rental Returns and Low Ongoing Costs! What else do you need?

A/REAL



BOX HILL

Suite 3.4, Level 3, 990 Whitehorse Road, Box Hill. Victoria 3128 | 8686 8388

HAWTHORN EAST

33 Camberwell Road, Hawthorn. Victoria 3123 | 9818 8991

MELBOURNE CBD

Level 7, 99 Queen Street, Melbourne. VIC 3000 | 9818 8991

POINT COOK

Entrance C4, Level 1, 2 Main Street, Point Cook. VIC 3030 | 8686 8338

SOUTH MORANG

29 Gorge Road, South Morang. VIC 3752 | 8804 5888

info@areal.com.au