

Over 8% Rental Yield in premier  
location & city views



For Sale

3601/135 A'Beckett Street, Melbourne VIC 3000

 1    1

\$403,380

## For Sale

3601/135 A'Beckett Street, Melbourne VIC 3000



Over 8% Rental Yield in premier location & city views

Showcasing Elenberg Fraser's signature design, this luxurious 1 bedroom, 1 bathroom apartment is meticulously crafted to elevate and inspire your lifestyle, with stunning views of the city streetscape.

Soft neutral tones, floor-to-ceiling windows and bespoke finishes exude sophistication in the open-plan living/dining area, complemented by a sleek stone-topped kitchen featuring stainless steel appliances, split system heating/AC, secure intercom entry and balcony.

Residents can indulge in exclusive access to resort-style amenities, including a gym, outdoor pool, spa, sauna, lounge and BBQ area. Nestled within the vibrant heart of Melbourne, it offers a truly unmatched living experience, just a leisurely stroll away from Queen Vic Market, Flagstaff Gardens, Melbourne University, RMIT, the invigorating city baths, high-end shopping destinations and an extensive array of dining options.

Disclaimer: We have in preparing the content used our best endeavours to ensure that the informatio...



**Eddie Zhu**

Managing Director - AReal Property  
Melbourne

0452 585 423

03 9818 8991

[eddie.zhu@areal.com.au](mailto:eddie.zhu@areal.com.au)

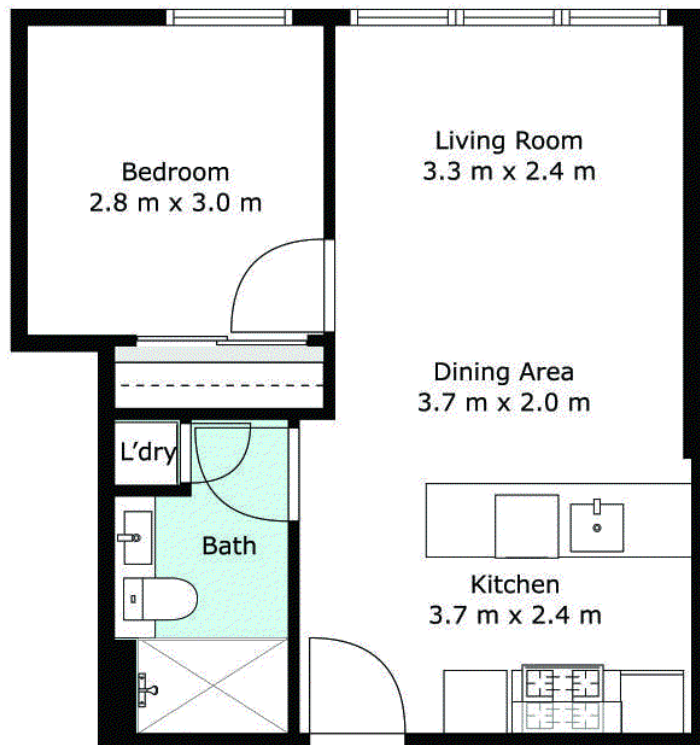




A/REAL







## BOX HILL

Suite 3.4, Level 3, 990 Whitehorse Road, Box Hill. Victoria 3128 | 8686 8388

## HAWTHORN EAST

33 Camberwell Road, Hawthorn. Victoria 3123 | 9818 8991

## MELBOURNE CBD

Level 7, 99 Queen Street, Melbourne. VIC 3000 | 9818 8991

## POINT COOK

Entrance C4, Level 1, 2 Main Street, Point Cook. VIC 3030 | 8686 8338

## SOUTH MORANG

29 Gorge Road, South Morang. VIC 3752 | 8804 5888

[info@areal.com.au](mailto:info@areal.com.au)