

In-Room/Online Auction |
Boutique living in prestigious
Glen Iris pocket



For Sale

9/15 Belmont Avenue, Glen Iris VIC 3146

 1  1

\$300,000

For Sale

9/15 Belmont Avenue, Glen Iris VIC 3146



In-Room/Online Auction | Boutique living in prestigious Glen Iris pocket

Tucked away in a tranquil, tree-lined street within a charming older-style, boutique complex, this beautifully light-filled apartment presents a compelling opportunity for both owner-occupiers and savvy investors.

Combining timeless appeal with today's comfort, the home exudes warmth throughout open-plan living/dining, tidy kitchen, bedroom with BIR, bathroom, wall panel heater and dedicated car space. Move in or lease out as is, or add your own modern vibe when ready, and add value to this immaculate gem.

Positioned in a sought-after leafy locale, a walk to the Harold Holt Swimming Centre, Gardiner Station, Malvern Central School and parklands, while prestigious private schools and shopping precincts are just a short drive away.

Disclaimer: We have in preparing the content used our best endeavours to ensure that the information contained is true and accurate, however accept no responsibility and disclaim all liability in respect to any errors, omissions, inaccuracies or misstatement...



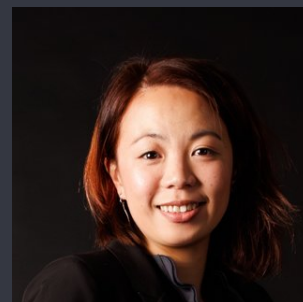
Warren Tate

Head of Sales, Licensed Estate Agent, Auctioneer

0412 328 072

03 9818 8991

warren.tate@areal.com.au



Lisa Tsang

Sales Executive

0493 890 612

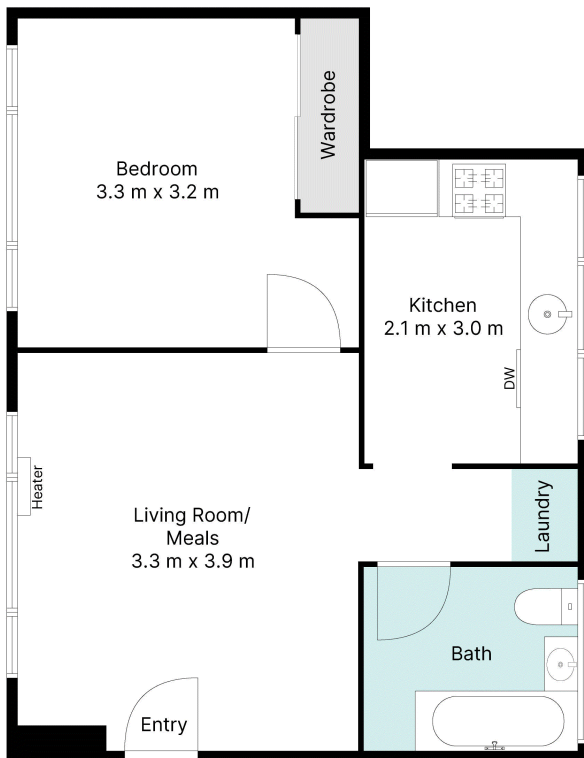
03 9818 8991

lisa.tsang@areal.com.au

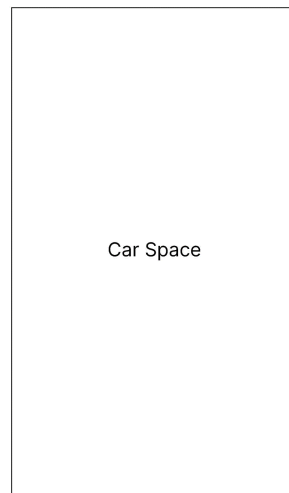


A/REAL





Floorplan



(Not In Position)

BOX HILL

Suite 3.4, Level 3, 990 Whitehorse Road, Box Hill. Victoria 3128 | 8686 8388

HAWTHORN EAST

33 Camberwell Road, Hawthorn. Victoria 3123 | 9818 8991

MELBOURNE CBD

Level 7, 99 Queen Street, Melbourne. VIC 3000 | 9818 8991

NORTH

Suites 4 & 5 High Street, Lalor. VIC 3075 | 03 9436 0888

POINT COOK

Entrance C4, Level 1, 2 Main Street, Point Cook. VIC 3030 | 8686 8338

SOUTH MORANG

29 Gorge Road, South Morang. VIC 3752 | 8804 5888

info@areal.com.au