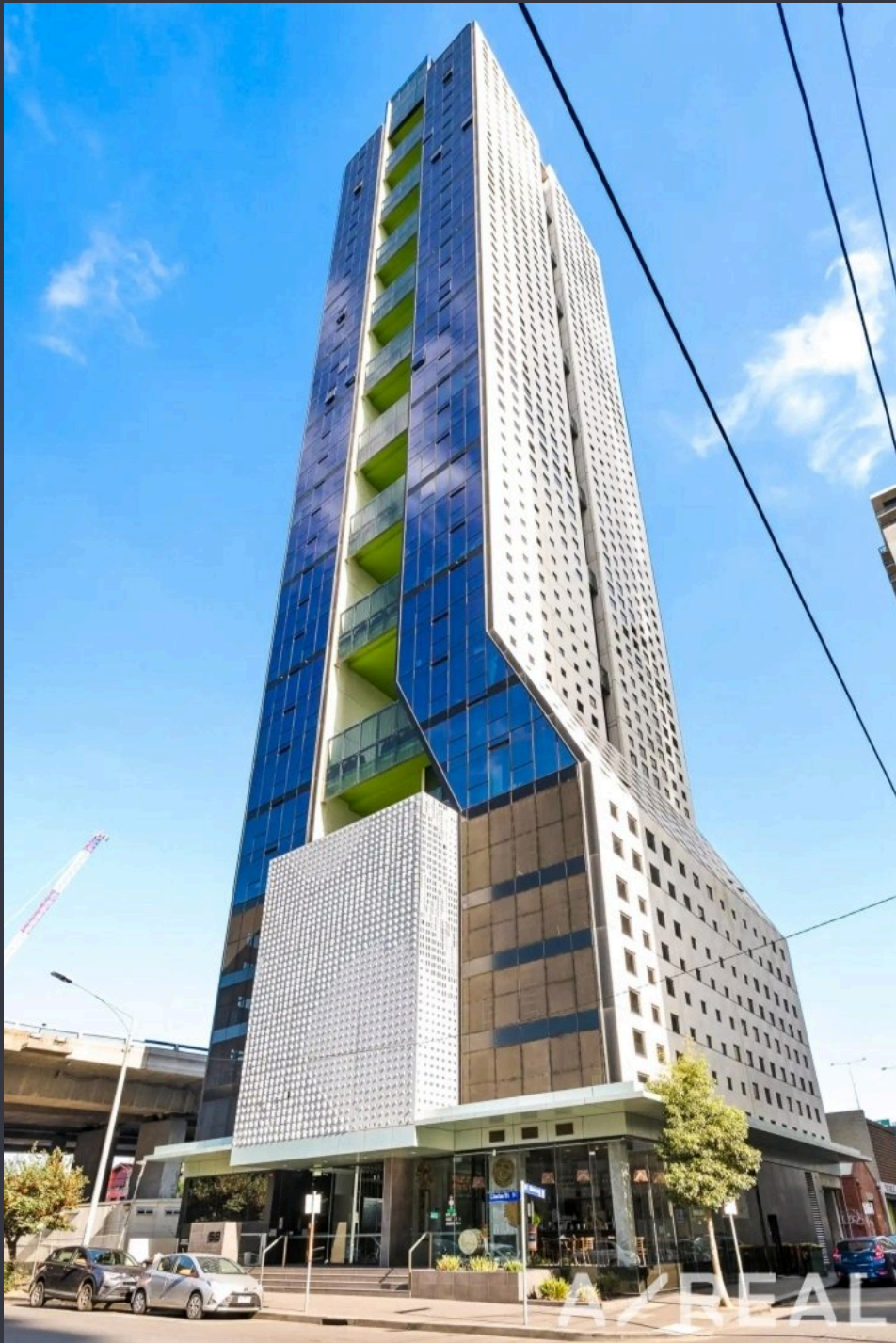


A/REAL

Contemporary City Living in
the Heart of Southbank



For Sale

For Sale

2801/58 Clarke Street, Southbank VIC 3006



Contemporary City Living in the Heart of Southbank

Perched high on level 28, this stylish 2-bedroom, 1-bathroom apartment offers the ultimate inner-city lifestyle. Designed with modern living in mind, the open floorplan seamlessly connects the living, dining, and kitchen areas – perfect for entertaining or unwinding after a busy day.

Beautiful timber floors flow throughout, while the sleek kitchen boasts quality appliances, generous storage, and contemporary finishes to delight any home cook. Both bedrooms are light-filled and spacious, creating a calming retreat from the buzz of the city. The bathroom is equally impressive with its modern design and premium fixtures.

Set in the heart of Southbank, you'll enjoy unbeatable access to Melbourne's finest amenities – from trendy cafés and dining precincts to shopping, cultural attractions, and business hubs – all just moments from your door.

Whether you're a first-home buyer, downsizer, or investor, this apartment delivers the perfect blend of style, convenience, and lifestyle appeal.

...



Jason Low

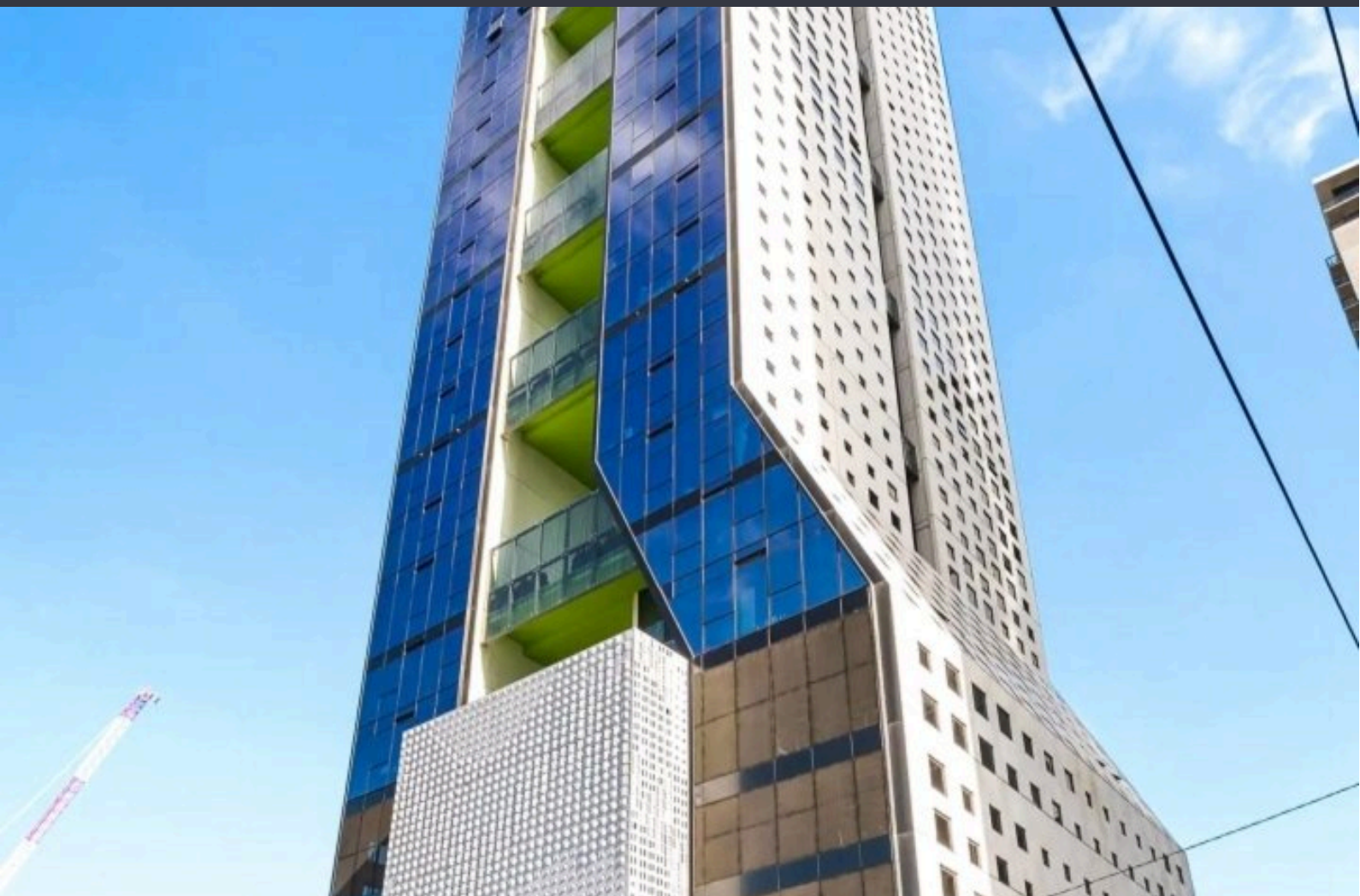
Director, Licensed Estate Agent

0468 958 332

03 9818 8991

jason.low@areal.com.au

A/REAL



BOX HILL

Suite 3.4, Level 3, 990 Whitehorse Road, Box Hill. Victoria 3128 | 8686 8388

HAWTHORN EAST

33 Camberwell Road, Hawthorn. Victoria 3123 | 9818 8991

MELBOURNE CBD

Level 7, 99 Queen Street, Melbourne. VIC 3000 | 9818 8991

NORTH

Suites 4 & 5 High Street, Lalor. VIC 3075 | 03 9436 0888

POINT COOK

Entrance C4, Level 1, 2 Main Street, Point Cook. VIC 3030 | 8686 8338

SOUTH MORANG

29 Gorge Road, South Morang. VIC 3752 | 8804 5888

info@areal.com.au