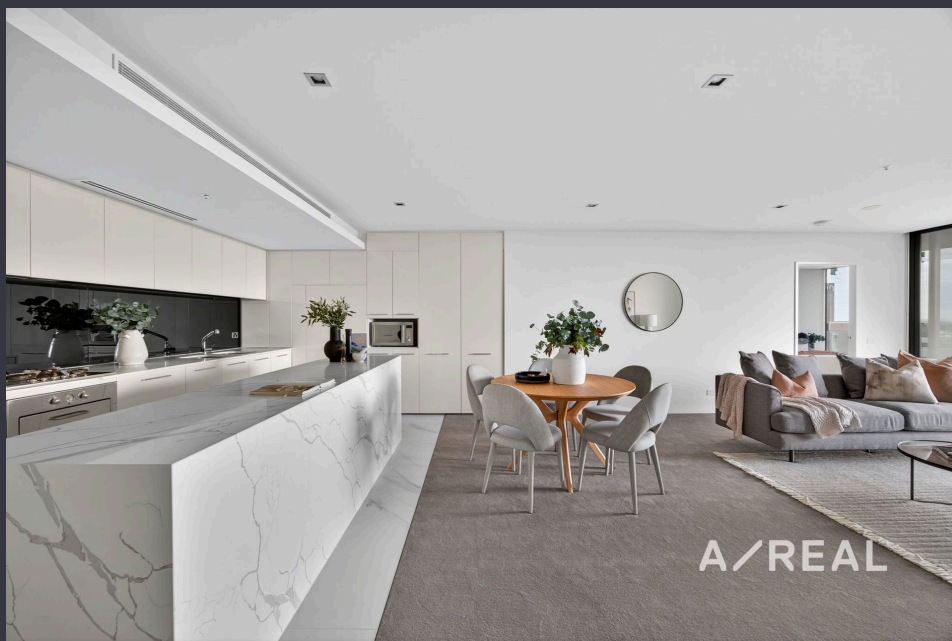




The Pinnacle Of High-end Living & Lifestyle Sophistication



For Sale

712/576 St Kilda Road, Melbourne VIC 3004

 2  2

\$1,050,000

For Sale

712/576 St Kilda Road, Melbourne VIC 3004

 2  2

The Pinnacle Of High-end Living & Lifestyle Sophistication

Immersed in the most breathtaking views of Port Phillip Bay, Albert Park Lake and the city skyline, this exquisite, newly renovated apartment is finished to the highest caliber and provides an effortless lifestyle of prestige, luxury and sophistication.

Designed and delivered without parallel and saturated in beautiful natural light, over-sized proportions are desirably open-plan and include a state-of-the-art kitchen, lavishly appointed with premium appliances stone surfaces and island bench – ideal for every day living or entertaining.

The large master bedroom is fitted with a huge bespoke ensuite and filled with sun, and accompanied by an additional bedroom and stunning bathroom – highlighting further exclusivity.

Delivering the pinnacle of high-end living complete with full-width balcony, reverse-cycle heating/AC and 2 basement car spaces. The YVE building itself offers residents 24-hour concierge service, a private cinema, indoor swimming pool, fully-equipped gymnasium, sauna...



Jason Low

Director/Licensed Estate Agent

0468 958 332

03 9818 8991

jason.low@areal.com.au



Warren Tate

Sales Manager, Licensed Estate Agent
& Auctioneer

0412 328 072

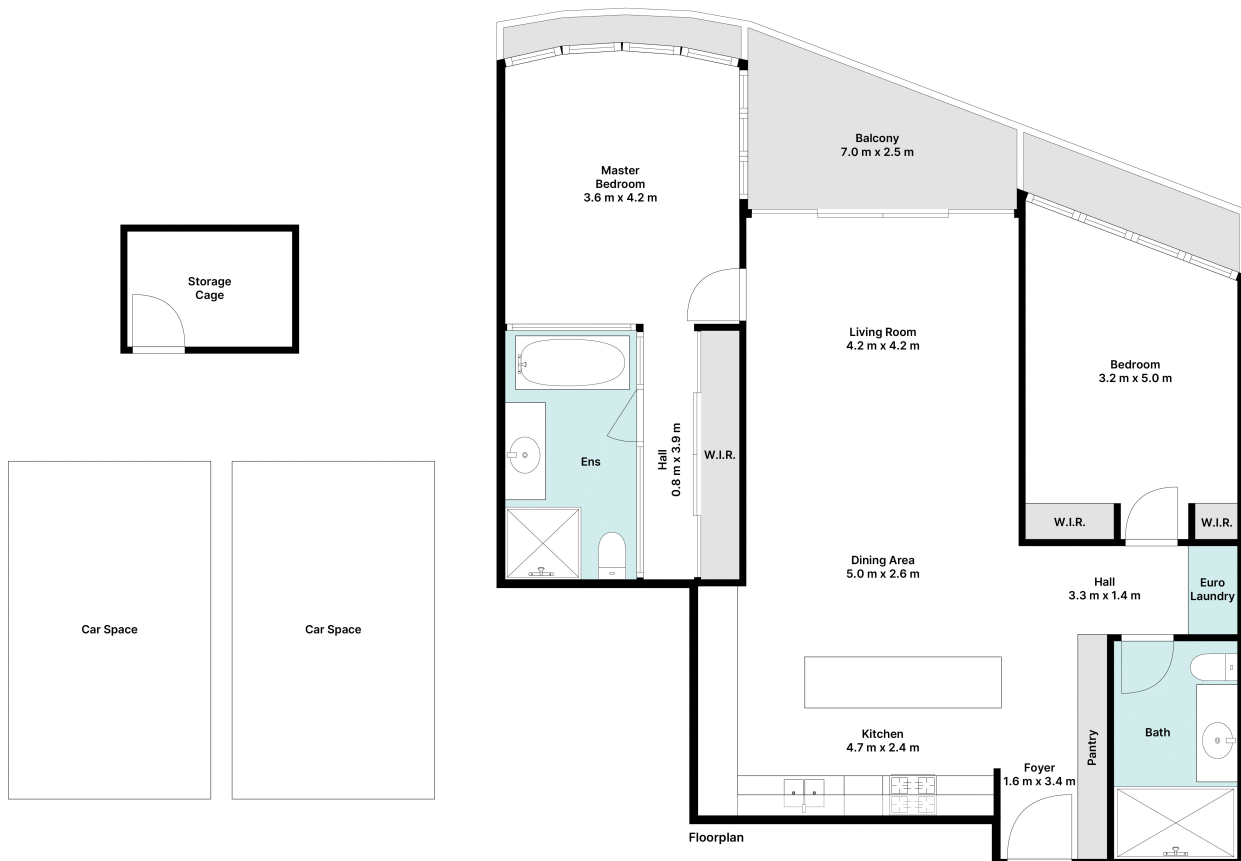
03 9818 8991

warren.tate@areal.com.au



A/REAL







BOX HILL

Suite 3.4, Level 3, 990 Whitehorse Road, Box Hill. Victoria 3128 | 8686 8388

HAWTHORN EAST

33 Camberwell Road, Hawthorn. Victoria 3123 | 9818 8991

MELBOURNE CBD

Level 7, 99 Queen Street, Melbourne. VIC 3000 | 9818 8991

POINT COOK

Entrance C4, Level 1, 2 Main Street, Point Cook. VIC 3030 | 8686 8338

SOUTH MORANG

29 Gorge Road, South Morang. VIC 3752 | 8804 5888

info@areal.com.au

areal.com.au