

## Architect-designed offices



## For Sale

102/43 Danaher Drive, South Morang VIC 3752

↑m<sup>2</sup> 133sqm

Contact Agent

## For Sale

102/43 Danaher Drive, South Morang VIC 3752

 133sqm

### Architect-designed offices

Discover the future of workplace design at 43 Danaher Drive, South Morang-a bold, multi-use development that perfectly balances form and function. Offering 12 premium office suites within a thriving commercial hub, this project is tailored for professionals and businesses seeking a sleek, contemporary environment in Melbourne's fast-growing northern corridor.

Defined by a refined industrial-chic aesthetic, these architecturally designed offices feature:

Ceiling-height glass windows that flood spaces with natural light

Choice of finishes including polished concrete, carpet, or tile flooring

Stairways in tactile white or elegant Victorian Ash tread

High-quality touches in stone, stainless steel and matte black fittings

On-site car parking and end-of-trip facilities for ultimate convenience

Set within a fully landscaped precinct, the building makes a striking first impression. Mature trees, native grasses, sculpted pathways, and modern retaining walls offer a calm and professional...



## Justin Sciola

Sales Director | Auctioneer - AReal  
Property South Morang

0423 916 416  
03 8804 5888  
[justin.sciola@areal.com.au](mailto:justin.sciola@areal.com.au)



## Jimmy Lim

Managing Director & Chief  
Executive Officer

0415 089 332  
03 8686 8388  
[jimmy.lim@areal.com.au](mailto:jimmy.lim@areal.com.au)



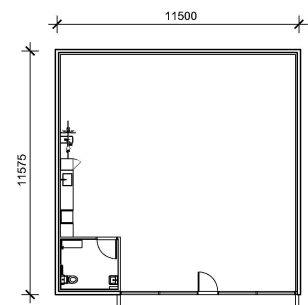
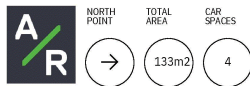
# A/REAL





A/REAL  
COMMERCIAL

05  
Level One



A/REAL  
COMMERCIAL

## BOX HILL

Suite 3.4, Level 3, 990 Whitehorse Road, Box Hill. Victoria 3128 | 8686 8388

## HAWTHORN EAST

33 Camberwell Road, Hawthorn. Victoria 3123 | 9818 8991

## MELBOURNE CBD

Level 7, 99 Queen Street, Melbourne. VIC 3000 | 9818 8991

## POINT COOK

Entrance C4, Level 1, 2 Main Street, Point Cook. VIC 3030 | 8686 8338

## SOUTH MORANG

29 Gorge Road, South Morang. VIC 3752 | 8804 5888

[info@areal.com.au](mailto:info@areal.com.au)