

Affordable and Modern Townhouse in Noble Park



For Sale

8/54 Buckley Street, Noble Park VIC 3174

 3  2

\$745,000

For Sale

8/54 Buckley Street, Noble Park VIC 3174

 3  2

Affordable and Modern Townhouse in Noble Park

Walking distance to Noble Park shopping precinct and train station, Noble Park Primary School and Secondary College dual school zone, easy access to M3 freeway, 30 mins to Melbourne CBD!

- School Zone
- 200m walk to Noble Park Primary School
- 4 mins drive to Noble Park Secondary College
- 8 mins drive to Haileybury College (Keysborough campus, Top Private School)
- Connectivity
- Route 709, 816 bus stop nearby
- 400m walk to Noble Park Station, with direct access to Melbourne CBD
- Shopping
- 300m walk to Noble Park shopping area and Coles
- 6 mins drive to Woolworths
- 8 mins drive to Parkmore Shopping Centre, IKEA, Bunnings and Officeworks
- Surrounding Parks
- Copas Park Playground nearby!
- 700m walk to Noble Park Skatepark and Noble Park Aquatic Centre
- Medical Centre
- 9 mins drive to Dandenong Hospital

Disclaimer: We have in preparing the content used our best endeavours to ensure that the information contained is true and accurate, however accept no responsibility and disc...



Andy Yuan

Senior Sales Executive, Licensed Estate Agent, Auctioneer

0406 217 388

03 8686 8388

andy.yuan@areal.com.au



Dave Tang

Sales Executive

0432 523 853

03 8686 8388

dave.tang@areal.com.au

A/REAL



Artist impression only



Artist impression only



Artist impression only



Artist impression only



A/REAL

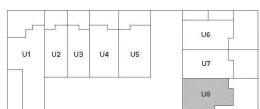
Artist impression only

**54 BUCKLEY STREET
NOBLE PARK VIC 3174**

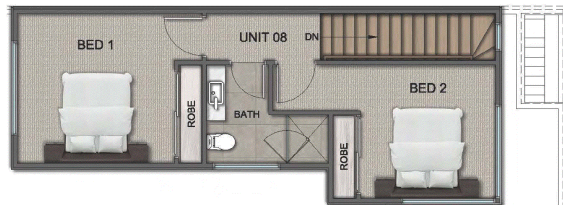
UNIT 8

3	2	2	2

GROUND FLOOR	60 m ²
FIRST FLOOR	47 m ²
SECOND FLOOR	41 m ²
TOTAL FLOOR AREA	15.8 SQ / 147 m²
S.P.O.S	10 m ²
TOTAL P.O.S	48 m ²
TOTAL AREA	20.99 SQ / 195 m²



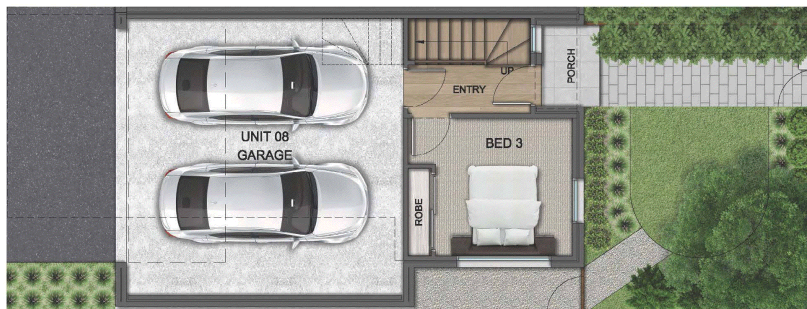
DISCLAIMER: This document has been produced by the developer for advertising and general information only. The developer and its project team do not guarantee, warranty or represent that the information contained within this document is correct. Any interested parties should undertake their own enquiries as to the accuracy of this document. The developer excludes any liability for any loss or damage arising out of this document and excludes all liability for loss and are subject to change without notice and should be verified by the purchaser on or prior to exchange. The information contained herein is believed to be current but is not guaranteed. Furniture is not included.



SECOND FLOOR



FIRST FLOOR



GROUND FLOOR

BOX HILL

Suite 3.4, Level 3, 990 Whitehorse Road, Box Hill. Victoria 3128 | 8686 8388

HAWTHORN EAST

33 Camberwell Road, Hawthorn. Victoria 3123 | 9818 8991

MELBOURNE CBD

Level 7, 99 Queen Street, Melbourne. VIC 3000 | 9818 8991

NORTH

Suites 4 & 5 High Street, Lalor. VIC 3075 | 03 9436 0888

POINT COOK

Entrance C4, Level 1, 2 Main Street, Point Cook. VIC 3030 | 8686 8338

SOUTH MORANG

29 Gorge Road, South Morang. VIC 3752 | 8804 5888

info@areal.com.au

areal.com.au