



Stylish, effortless and
positioned for convenience



For Sale

2401/245 City Road, Southbank VIC 3006



\$470,000 - \$490,000

For Sale

2401/245 City Road, Southbank VIC 3006



Stylish, effortless and positioned for convenience

Discover the ultimate in modern, low-maintenance living with this 2 bedrooms, 1 bathroom apartment in the sought-after 'Palladium' tower. Showcasing designer finishes and sun-filled interiors, it's the perfect choice for first-home buyers, professionals or astute investors.

Floor-to-ceiling windows flood the open-plan living/dining area with natural light, perfectly complementing a sophisticated kitchen equipped with stainless steel appliances and stone benchtops. Additional highlights include split system heating/AC, secure entry and private covered balcony designed for year-round entertaining.

Enjoy exclusive access to 'The Residents' Retreat' – featuring a stunning pool, state-of-the-art gym and impressive indoor/outdoor entertaining spaces that set a new benchmark for lifestyle luxury.

Situated just metres from the supermarket, and moments to trams and buses, this unbeatable location places you within easy reach of the Crown Complex and a short stroll into the CBD.

Discla...



Eddie Zhu

Managing Director - AReal Property
Melbourne

0452 585 423

03 9818 8991

eddie.zhu@areal.com.au



Hubo Yu

Sales Executive

0401 239 108

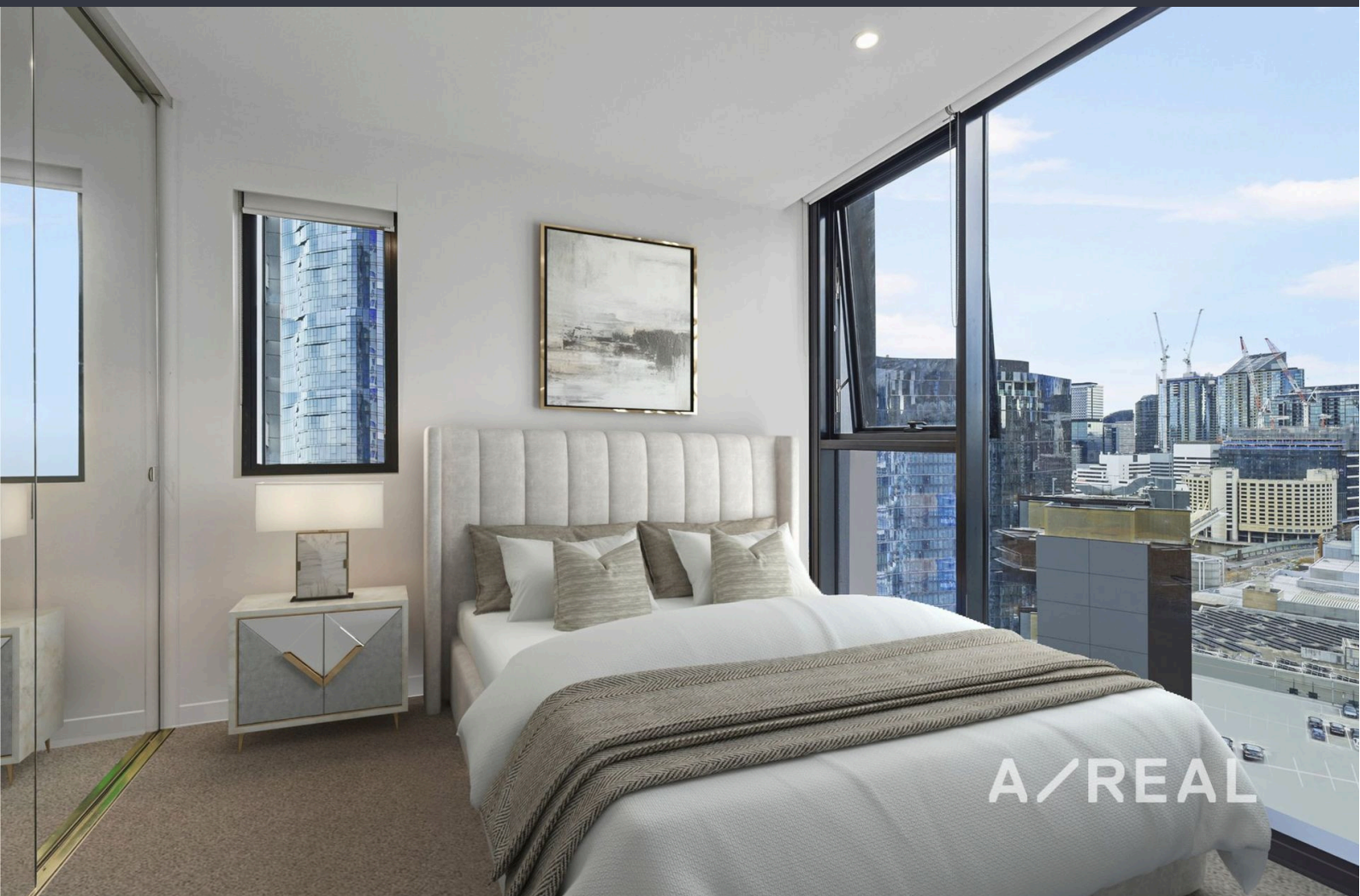
03 9818 8991

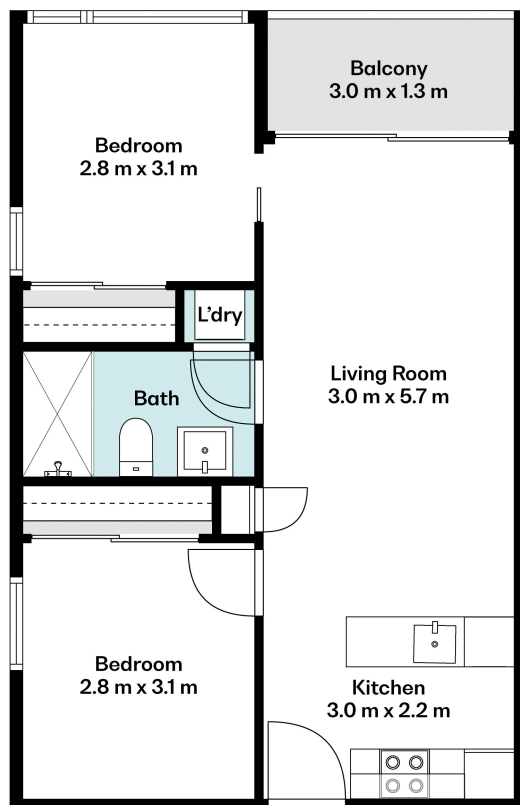
hubo.yu@areal.com.au

A/REAL



A/REAL





BOX HILL

Suite 3.4, Level 3, 990 Whitehorse Road, Box Hill. Victoria 3128 | 8686 8388

HAWTHORN EAST

33 Camberwell Road, Hawthorn. Victoria 3123 | 9818 8991

MELBOURNE CBD

Level 7, 99 Queen Street, Melbourne. VIC 3000 | 9818 8991

POINT COOK

Entrance C4, Level 1, 2 Main Street, Point Cook. VIC 3030 | 8686 8338

SOUTH MORANG

29 Gorge Road, South Morang. VIC 3752 | 8804 5888

info@areal.com.au