



## Contemporary Class in a Prime Doncaster Location



## For Sale

2/30 Fromhold Drive, Doncaster VIC 3108

 3    2

\$959,000

## For Sale

2/30 Fromhold Drive, Doncaster VIC 3108

 3    2

### Contemporary Class in a Prime Doncaster Location

A striking expression of contemporary elegance, this dual-level town residence delivers timeless sophistication, effortless comfort, and premium quality throughout.

Showcasing extra-high ceilings, premium finishes, and elegant timber floors, the interiors flow seamlessly to a gourmet kitchen appointed with stone benchtops, stainless steel appliances, and a stylish breakfast bench. The sun-drenched open-plan living and dining area opens through full-width bi-fold doors to a private paved courtyard – perfect for effortless indoor-outdoor entertaining.

Modern comforts are elevated with Smart Temp central heating and cooling, and Rinnai water temperature control for year-round climate and lifestyle ease.

Upstairs, three generously sized bedrooms with built-in robes provide peaceful retreats, including a luxurious master suite complete with walk-in robe and a sleek ensuite. A stunning central bathroom and a convenient powder room enhance everyday functionality.

Finished to perfecti...



**Andy Yuan**

Senior Sales Executive

0406 217 388

03 8686 8388

[andy.yuan@areal.com.au](mailto:andy.yuan@areal.com.au)



**Dave Tang**

Sales Executive

0432 523 853

03 8686 8388

[dave.tang@areal.com.au](mailto:dave.tang@areal.com.au)



A/REAL

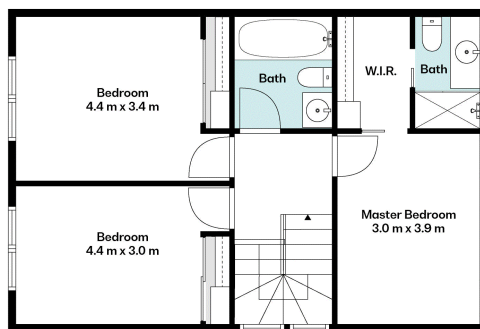




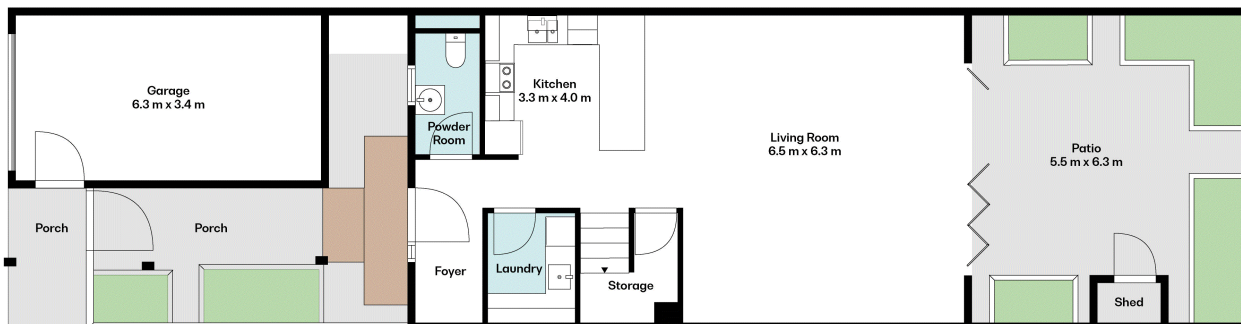
A/REAL







First Floor



Ground Floor & Site Plan



## BOX HILL

Suite 3.4, Level 3, 990 Whitehorse Road, Box Hill. Victoria 3128 | 8686 8388

## HAWTHORN EAST

33 Camberwell Road, Hawthorn. Victoria 3123 | 9818 8991

## MELBOURNE CBD

Level 7, 99 Queen Street, Melbourne. VIC 3000 | 9818 8991

## POINT COOK

Entrance C4, Level 1, 2 Main Street, Point Cook. VIC 3030 | 8686 8338

## SOUTH MORANG

29 Gorge Road, South Morang. VIC 3752 | 8804 5888

[info@areal.com.au](mailto:info@areal.com.au)