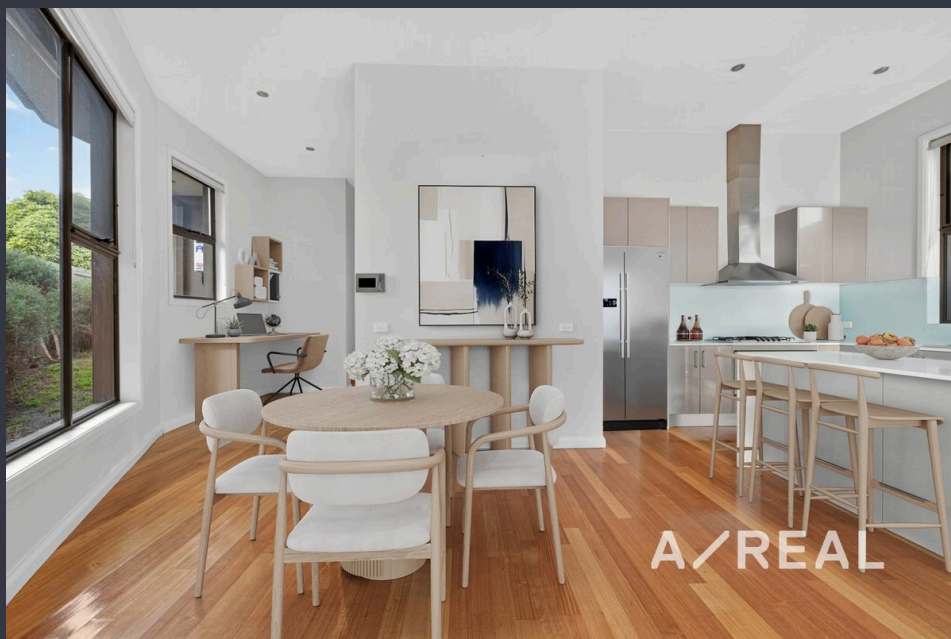


# A/REAL

## Effortless, Modern Style In Parkside Setting



## For Sale

4/1 Veda Court, Templestowe VIC 3106

 3

 2

 365sqm

\$1,050,000

## For Sale

4/1 Veda Court, Templestowe VIC 3106



3



2



365sqm

### Effortless, Modern Style In Parkside Setting

Impeccably appointed for contemporary living, this low-maintenance retreat has been designed to maximise northern sun, offers split-level convenience and boasts a tranquil parkland location.

Sleek, modern style graces the open-plan layout, with a striking stone-topped kitchen featuring a handy island bench, extending outdoors to a private paved entertaining patio.

Positioned at the front of the home, the master suite boasts a luxe ensuite, while 2 further bedrooms are fitted with built-in robes and share an immaculate bathroom. Indulge in the added comfort of split system heating/AC, video intercom and double garage – enhancing downsizer, starter and investor appeal

Ideally positioned just metres from Ruffey Lake Park and the Ruffey Creek Trail, this home enjoys easy access to local buses and lies within the sought-after Templestowe College and Templestowe Heights Primary School zones. Conveniently close to Westfield Doncaster, EastLink, Templestowe Village, The Pines Shopping Cent...



**Lisa Tsang**

Sales Executive

0493 890 612

03 9818 8991

[lisa.tsang@areal.com.au](mailto:lisa.tsang@areal.com.au)



**Jason Low**

Director, Licensed Estate Agent

0468 958 332

03 9818 8991

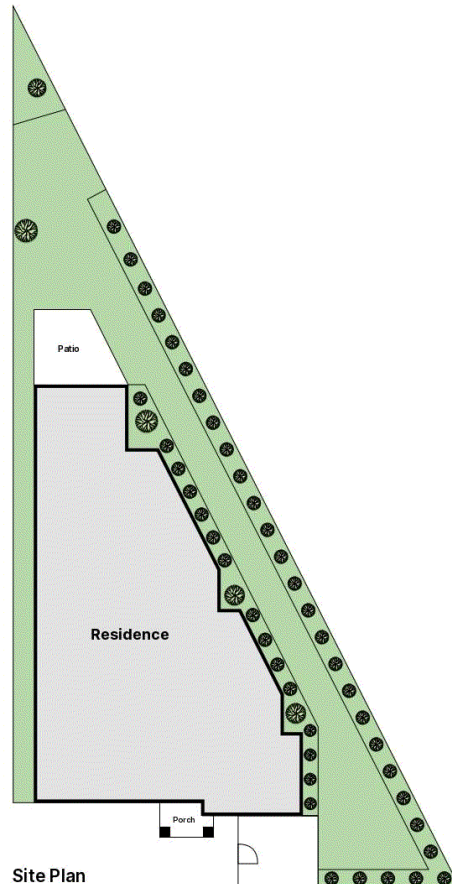
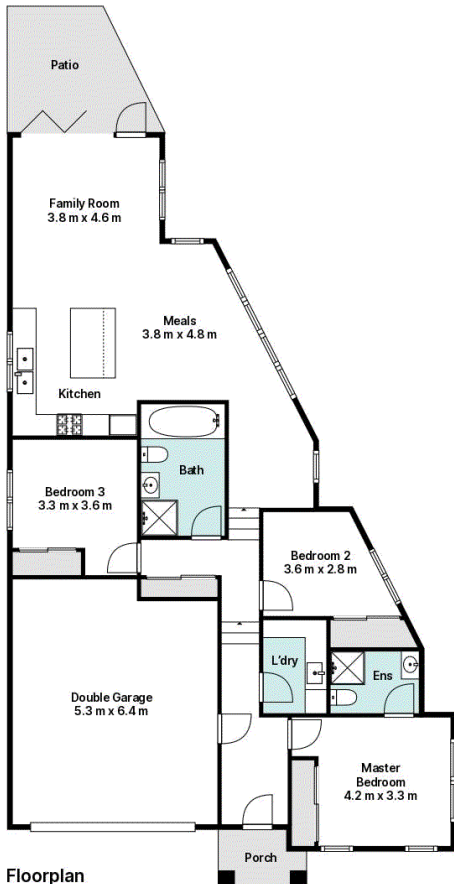
[jason.low@areal.com.au](mailto:jason.low@areal.com.au)

A/REAL



A/REAL





## BOX HILL

Suite 3.4, Level 3, 990 Whitehorse Road, Box Hill. Victoria 3128 | 8686 8388

## HAWTHORN EAST

33 Camberwell Road, Hawthorn. Victoria 3123 | 9818 8991

## MELBOURNE CBD

Level 7, 99 Queen Street, Melbourne. VIC 3000 | 9818 8991

## NORTH

Suites 4 & 5 High Street, Lalor. VIC 3075 | 03 9436 0888

## POINT COOK

Entrance C4, Level 1, 2 Main Street, Point Cook. VIC 3030 | 8686 8338

## SOUTH MORANG

29 Gorge Road, South Morang. VIC 3752 | 8804 5888

[info@areal.com.au](mailto:info@areal.com.au)