

Live high in the sky with
breathtaking views



For Sale

3209/8 Pearl River Road, Docklands VIC 3008

 3  3

\$904,000

For Sale

3209/8 Pearl River Road, Docklands VIC 3008



Live high in the sky with breathtaking views

Perched 32 floors high in the luxurious Marina Tower, this designer apartment is immersed in spectacular views from every angle.

Floor-to-ceiling windows capture the sweeping vistas of Port Phillip Bay, Yarra River and city skyline, that grace the open-plan living/dining environment including bespoke chef-inspired kitchen, flaunting stone surfaces, integrated fridge/freezer and high-end Miele appliances. Impressive space is further highlighted by 3 over-sized robed bedrooms, including a lavish master suite fitted with a sleek ensuite/WIR, additional bedroom with an ensuite, plus sublime bathroom.

With luxury and comfort at the forefront, this stunning home is complete with heating/AC, mirrored robes, quality timber floors, secure intercom entry and basement car space.

Marina Tower residents enjoy exclusive access to premium amenities, such as a lobby lounge, library, business centre, cinema, billiards room, rooftop pool and gym. Located within footsteps of Docklands Primary, NewQ...



Andy Yuan

Senior Sales Executive, Licensed Estate Agent, Auctioneer

0406 217 388

03 8686 8388

andy.yuan@areal.com.au



Dave Tang

Sales Executive

0432 523 853

03 8686 8388

dave.tang@areal.com.au

A/REAL



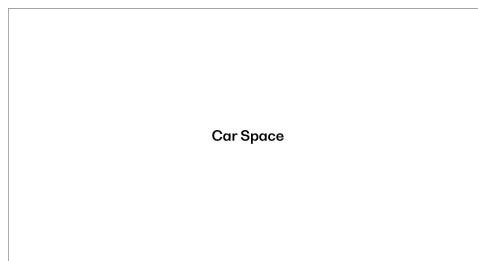
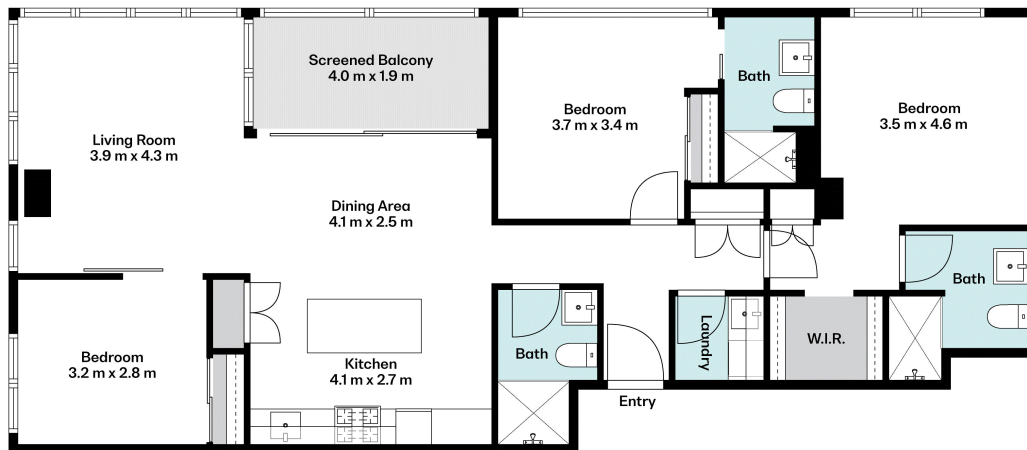
A/REAL





A/REAL

Living Area: 105m²
Balcony: 8m²
(Approx.)



(Not in Position)



BOX HILL

Suite 3.4, Level 3, 990 Whitehorse Road, Box Hill. Victoria 3128 | 8686 8388

HAWTHORN EAST

33 Camberwell Road, Hawthorn. Victoria 3123 | 9818 8991

MELBOURNE CBD

Level 7, 99 Queen Street, Melbourne. VIC 3000 | 9818 8991

NORTH

Suites 4 & 5 High Street, Lalor. VIC 3075 | 03 9436 0888

POINT COOK

Entrance C4, Level 1, 2 Main Street, Point Cook. VIC 3030 | 8686 8338

SOUTH MORANG

29 Gorge Road, South Morang. VIC 3752 | 8804 5888

info@areal.com.au

areal.com.au