

## Immaculate Gem With Endless Options On 811sqm



## For Sale

2 Woodhouse Grove, Box Hill North VIC 3129

 4  3  811sqm

\$1,600,000-\$1,760,000

## For Sale

2 Woodhouse Grove, Box Hill North VIC 3129

 4  3  811sqm

### Immaculate Gem With Endless Options On 811sqm

Well-presented and exuding timeless charm and modern enhancements, this immaculate single-level gem presents move in ready and lease out options, plus a multitude of exciting future possibilities on 811sqm (approx).

Timber floors and natural light add vibrancy to welcoming interiors, with ambient living and dining rooms accompanying a pristine skylit kitchen, 4 robed bedrooms and 3 bathrooms. Appreciate the added luxury of ducted heating, evaporative AC, generous rear garden, large workshop/shed and double carport, while also exploring the potential of the vast land dimensions to either build a luxurious new masterpiece or redevelop with multiple townhouses (STCA).

Zoned for Box Hill North Primary School and Koonung Secondary College, moments to Box Hill Central, Westfield Doncaster, Kerrimuir shops, Elgar Park, and the Koonung Creek Trail. Also, this opportunity-rich property is within easy reach of Box Hill Station, Tram Route 109, multiple bus services, Deakin University and Box ...



**Andy Yuan**

Senior Sales Executive

0406 217 388

03 8686 8388

[andy.yuan@areal.com.au](mailto:andy.yuan@areal.com.au)



**Keith Chan**

Sales Executive/Auctioneer

0410 234 188

03 9818 8991

[keith.chan@areal.com.au](mailto:keith.chan@areal.com.au)



A/REAL

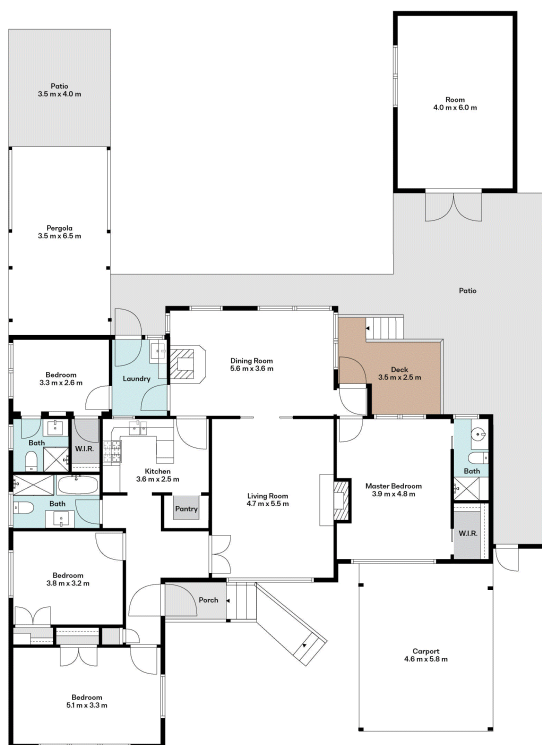




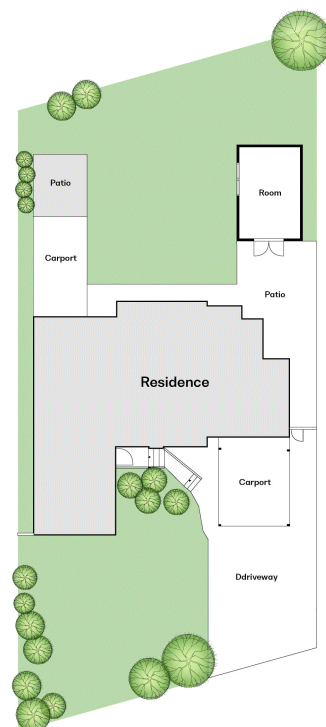
A/REAL







Floorplan



Site Plan



## BOX HILL

Suite 3.4, Level 3, 990 Whitehorse Road, Box Hill. Victoria 3128 | 8686 8388

## HAWTHORN EAST

33 Camberwell Road, Hawthorn. Victoria 3123 | 9818 8991

## MELBOURNE CBD

Level 7, 99 Queen Street, Melbourne. VIC 3000 | 9818 8991

## POINT COOK

Entrance C4, Level 1, 2 Main Street, Point Cook. VIC 3030 | 8686 8338

## SOUTH MORANG

29 Gorge Road, South Morang. VIC 3752 | 8804 5888

[info@areal.com.au](mailto:info@areal.com.au)