

## Spectacular City Views from a 2 Bedroom Apartment in Palladium Tower Steps to CBD and Crown



For Lease

2401/245 City Road, Southbank VIC 3006

 2  1

\$640 per Week

## For Lease

2401/245 City Road, Southbank VIC 3006

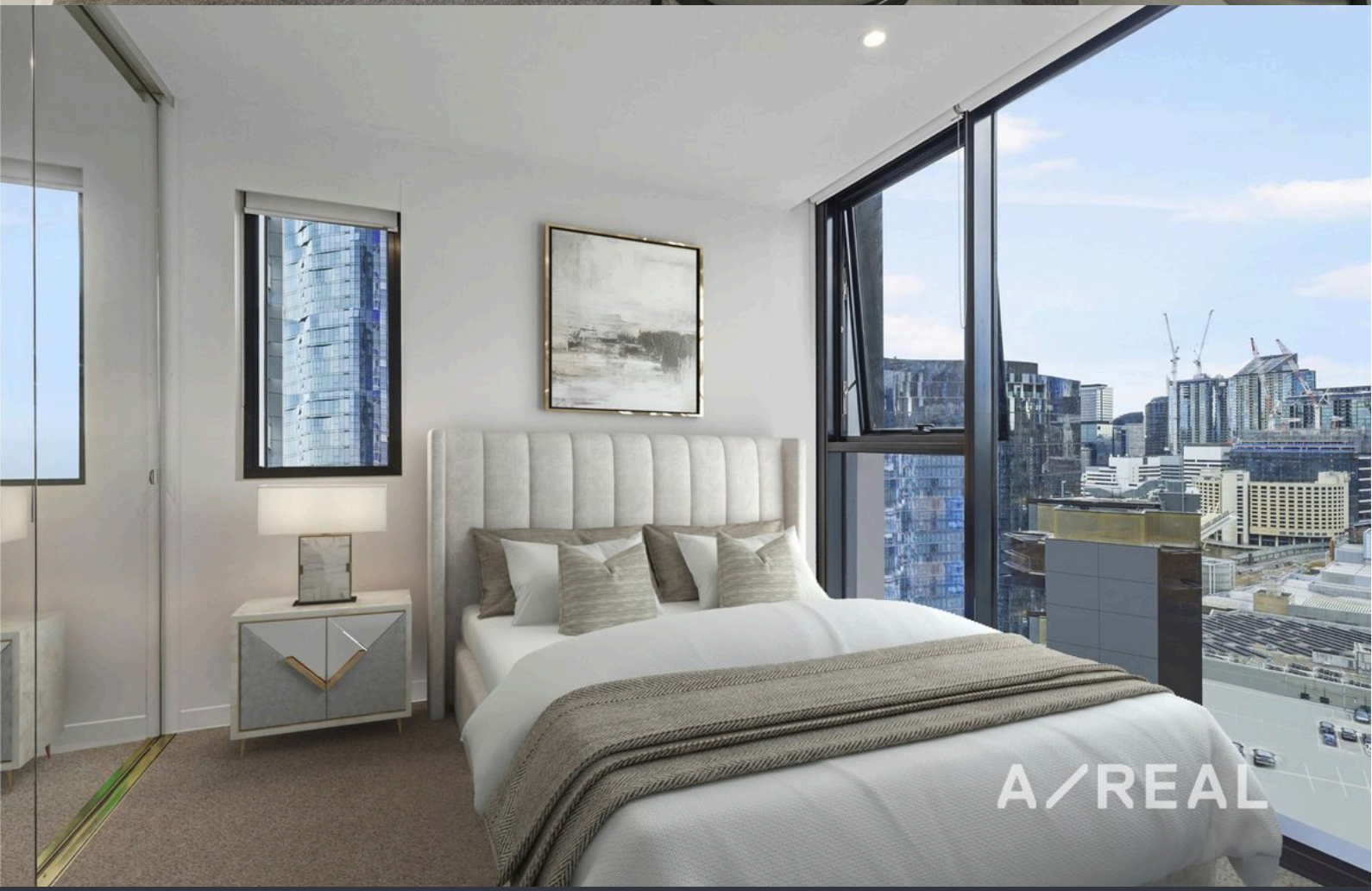


### Spectacular City Views from a 2 Bedroom Apartment in Palladium Tower Steps to CBD and Crown

\*\*Scheduling your property inspection is now a breeze! Simply click on the "Book an Inspection" or "Request a Time" button to secure your appointment. You'll instantly receive a confirmation and be kept up-to-date with any alterations or cancellations concerning your scheduled visit. Please be aware, inspections may be subject to cancellation if no bookings are registered. Make your booking today and take the first step in finding your ideal home\*\*

Experience contemporary city living in this stylish 2-bedroom, 1-bathroom apartment in the highly sought-after Palladium Tower. Available now with flexible lease options and immediate move-in, this home offers unbeatable city views from the balcony and floor-to-ceiling windows, making it perfect for professionals, students, or anyone looking to live in the heart of Melbourne.

The open-plan living and dining area is filled with natural light and seamlessly connects to a modern kitchen equipped with stainless steel appliances and stone benc...





## BOX HILL

Suite 3.4, Level 3, 990 Whitehorse Road, Box Hill. Victoria 3128 | 8686 8388

## HAWTHORN EAST

33 Camberwell Road, Hawthorn. Victoria 3123 | 9818 8991

## MELBOURNE CBD

Level 7, 99 Queen Street, Melbourne. VIC 3000 | 9818 8991

## NORTH

Suites 4 & 5 High Street, Lalor. VIC 3075 | 03 9436 0888

## POINT COOK

Entrance C4, Level 1, 2 Main Street, Point Cook. VIC 3030 | 8686 8338

## SOUTH MORANG

29 Gorge Road, South Morang. VIC 3752 | 8804 5888

[info@areal.com.au](mailto:info@areal.com.au)