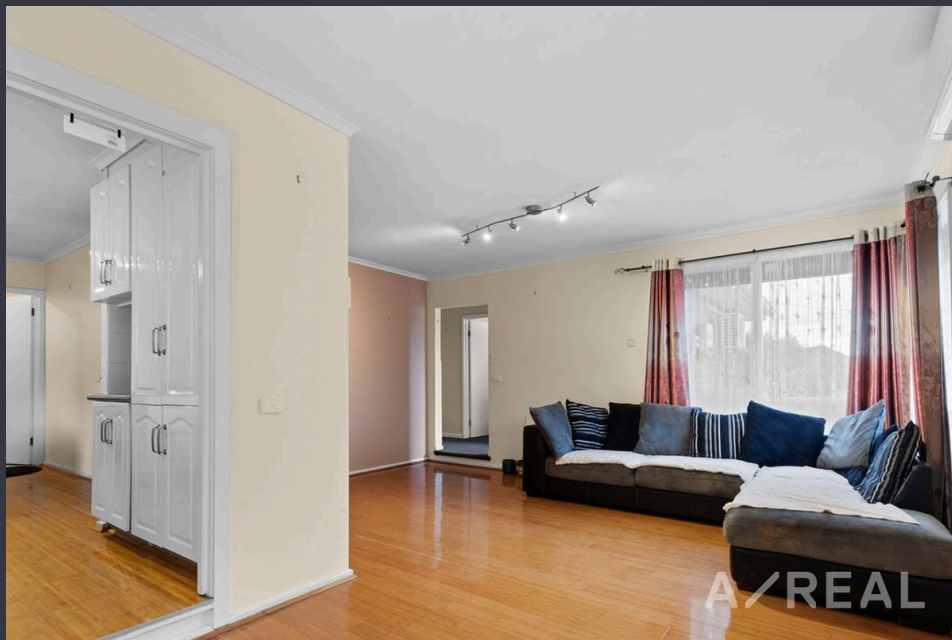


Comfort, Convenience & Charm in Woodville Park



For Lease

43A Claremont Crescent, Hoppers Crossing VIC 3029



3



1



559sqm

\$420 per Week

For Lease

43A Claremont Crescent, Hoppers Crossing VIC 3029



3



1



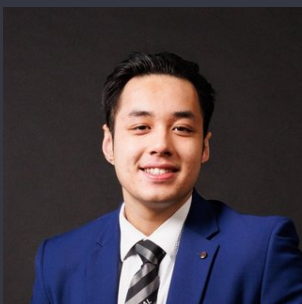
559sqm

Comfort, Convenience & Charm in Woodville Park

Scheduling your property inspection is now a breeze! Simply click on the "Book an Inspection" or "Request a Time" button to secure your appointment. You'll instantly receive a confirmation and be kept up-to-date with any alterations or cancellations concerning your scheduled visit. Please be aware, inspections may be subject to cancellation if no bookings are registered. Make your booking today and take the first step in finding your ideal home

Nestled on a tranquil street within the Woodville Park Estate, this three-bedroom family haven offers space, convenience, and modern features. The well-designed layout encompasses three sizable bedrooms, all equipped with robes. A central bathroom complemented by a secondary powder room, and an open-plan living/dining space bathes in natural sunlight, while the accompanying kitchen is a chef's delight, showcasing state-of-the-art induction cooking.

The home's prime location is another of its strong suits. Key amenities such as Hoppers Cro...



Alex Do

Leasing Specialist

0433 855 306

03 9818 8991

alex.do@areal.com.au





BOX HILL

Suite 3.4, Level 3, 990 Whitehorse Road, Box Hill. Victoria 3128 | 8686 8388

HAWTHORN EAST

33 Camberwell Road, Hawthorn. Victoria 3123 | 9818 8991

MELBOURNE CBD

Level 7, 99 Queen Street, Melbourne. VIC 3000 | 9818 8991

NORTH

Suites 4 & 5 High Street, Lalor. VIC 3075 | 03 9436 0888

POINT COOK

Entrance C4, Level 1, 2 Main Street, Point Cook. VIC 3030 | 8686 8338

SOUTH MORANG

29 Gorge Road, South Morang. VIC 3752 | 8804 5888

info@areal.com.au