

## Elegant Family Living in a Tranquil Cul-de-Sac Setting



## For Lease

4 Edith Avenue, Croydon VIC 3136

 3  1

\$580 per Week

## For Lease

4 Edith Avenue, Croydon VIC 3136

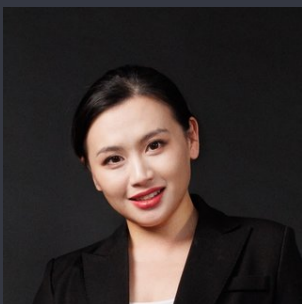


### Elegant Family Living in a Tranquil Cul-de-Sac Setting

Nestled in a peaceful cul-de-sac just moments from the open spaces of Ainslie Park, this beautifully maintained home offers a seamless blend of comfort, privacy, and lifestyle convenience. The residence is thoughtfully designed for low-maintenance living in a highly sought-after location.

Privately set behind a secure front fence, the home welcomes you with manicured gardens and two generous covered decks—perfect for morning coffee or relaxed outdoor entertaining. Inside, a sun-filled lounge and dining area connects effortlessly to the alfresco through elegant French doors, while the fully equipped kitchen includes gas cooking, quality appliances, and ample storage. Accommodation comprises three well-proportioned bedrooms, two with freestanding wardrobes, serviced by an updated central bathroom with a separate bath and shower, plus a separate toilet and a functional laundry with built-in cabinetry.

Additional features include ducted heating, split-system air conditioning, a secure g...



**Renata Xiang**

Business Development Manager

0437 626 898

03 9116 5797

[renata.xiang@areal.com.au](mailto:renata.xiang@areal.com.au)

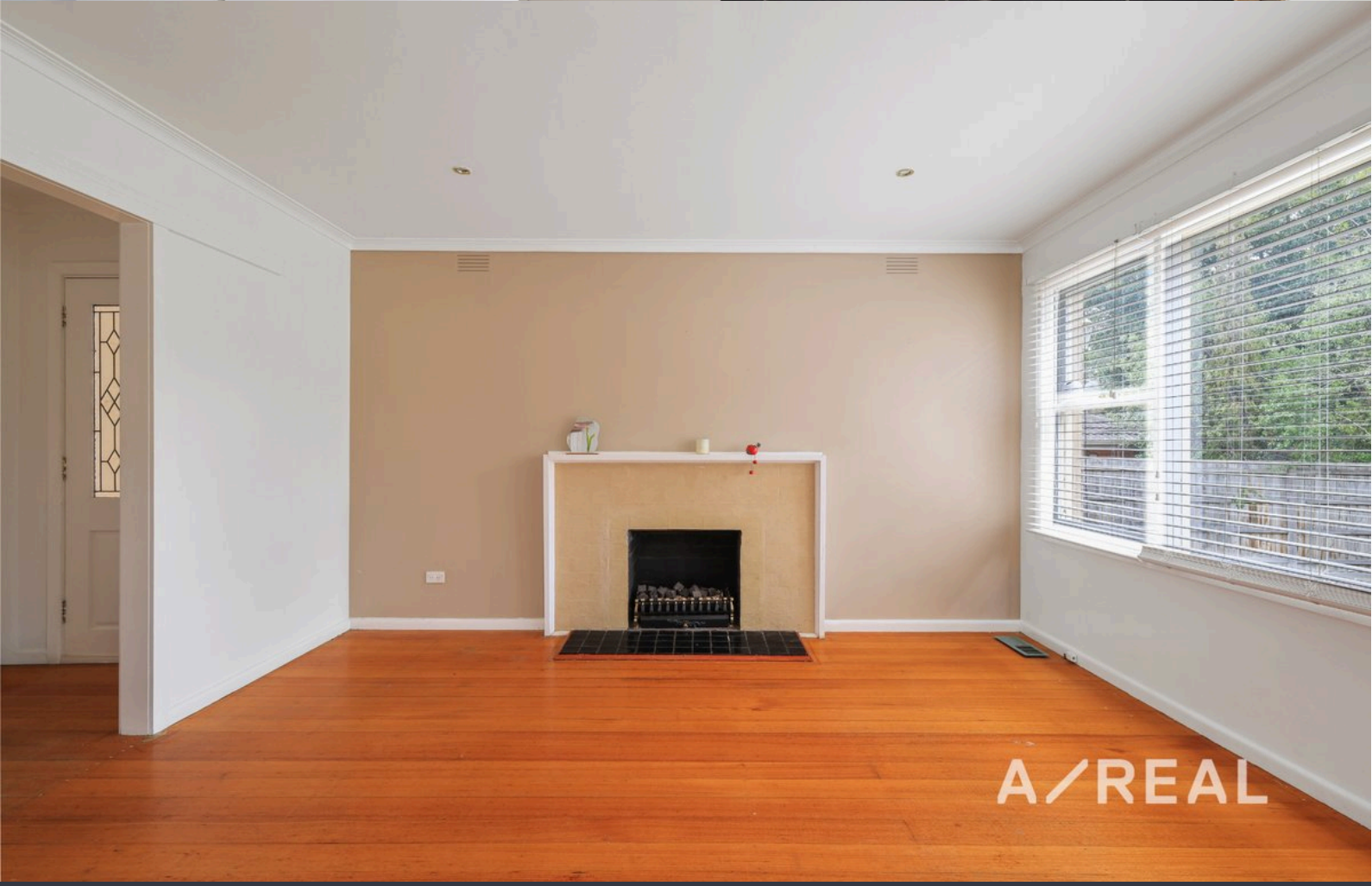
A/REAL

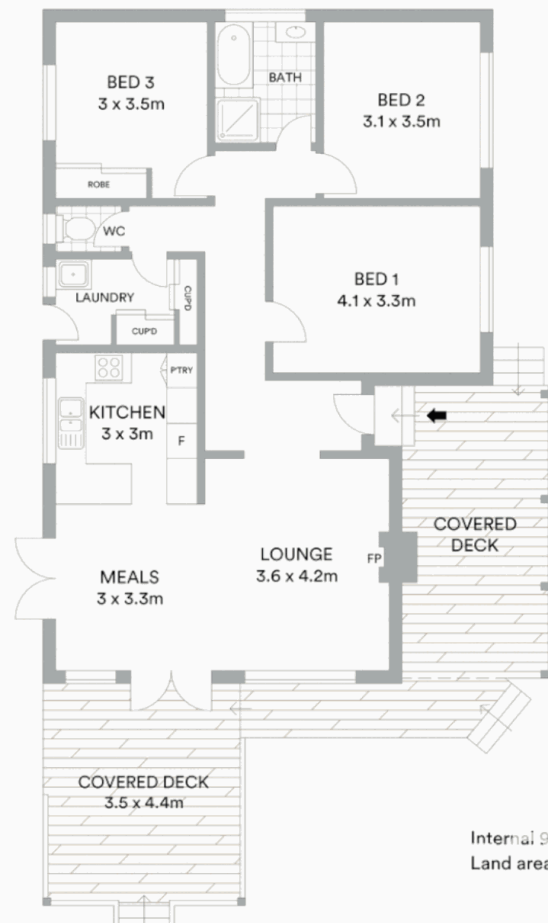
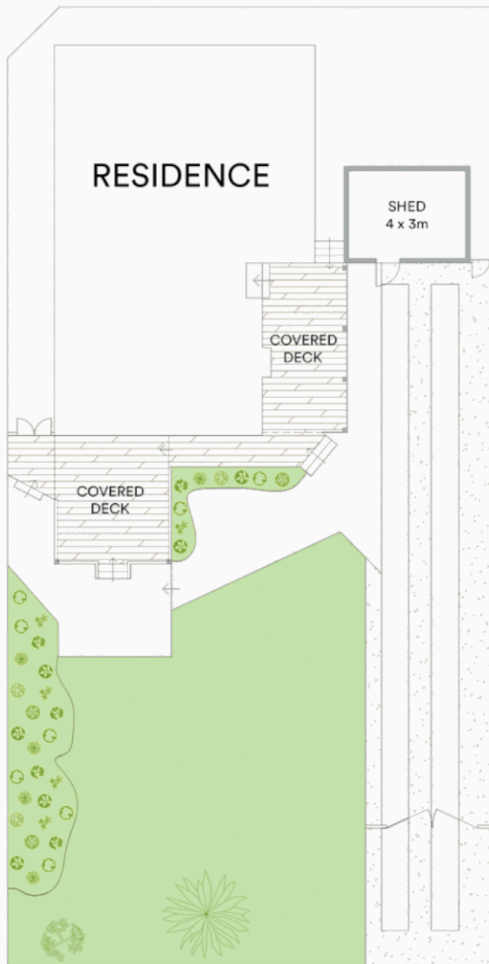


A/REAL



A/REAL





## BOX HILL

Suite 3.4, Level 3, 990 Whitehorse Road, Box Hill. Victoria 3128 | 8686 8388

## HAWTHORN EAST

33 Camberwell Road, Hawthorn. Victoria 3123 | 9818 8991

## MELBOURNE CBD

Level 7, 99 Queen Street, Melbourne. VIC 3000 | 9818 8991

## NORTH

Suites 4 & 5 High Street, Lalor. VIC 3075 | 03 9436 0888

## POINT COOK

Entrance C4, Level 1, 2 Main Street, Point Cook. VIC 3030 | 8686 8338

## SOUTH MORANG

29 Gorge Road, South Morang. VIC 3752 | 8804 5888

[info@areal.com.au](mailto:info@areal.com.au)