

In-Room/Online Auction |
Sophistication & Breathtaking
Space In Architecturally
Acclaimed Empire



For Sale

601/398 Elizabeth Street, Melbourne VIC 3000

🛏 1 🚿 1

\$390,000

For Sale

601/398 Elizabeth Street, Melbourne VIC 3000



In-Room/Online Auction | Sophistication & Breathtaking Space In Architecturally Acclaimed Empire

Situated in the iconic "Empire" building, known for its architectural presence, unrivalled luxury and sophistication, this unique 70sqm dual-level apartment is a rare opportunity of first-class prestige.

A double-height ceiling, state-of-the-art finishes and timber floors create a spectacular impact throughout its over-sized proportions, with expansive open-plan living/dining incorporating a deluxe kitchen flaunting illustrious stone surfaces and high-end appliances.

The upper-level is dedicated to a palatial-sized bedroom, lavishly appointed with a stunning ensuite/WIR, while heating/AC, study, powder room and balcony add to the exclusivity of this heart-of-the-city retreat.

Residents will gravitate to the facilities including a pool, gym, yoga studio, executive lounge, dining room for large-scale entertaining and a Blue-chip location, seconds from RMIT and surrounded by the Queen Victoria Market, Melbourne University, the State Library, supermarkets and premium retail at Melbour...



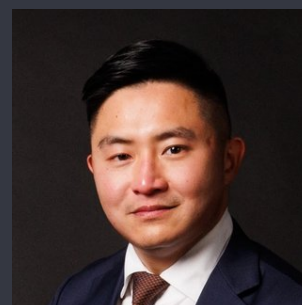
Kay Lim

Sales Executive, Licensed Estate Agent

0416 260 421

03 8686 8388

kay.lim@areal.com.au



Keith Chan

Sales Executive, Auctioneer

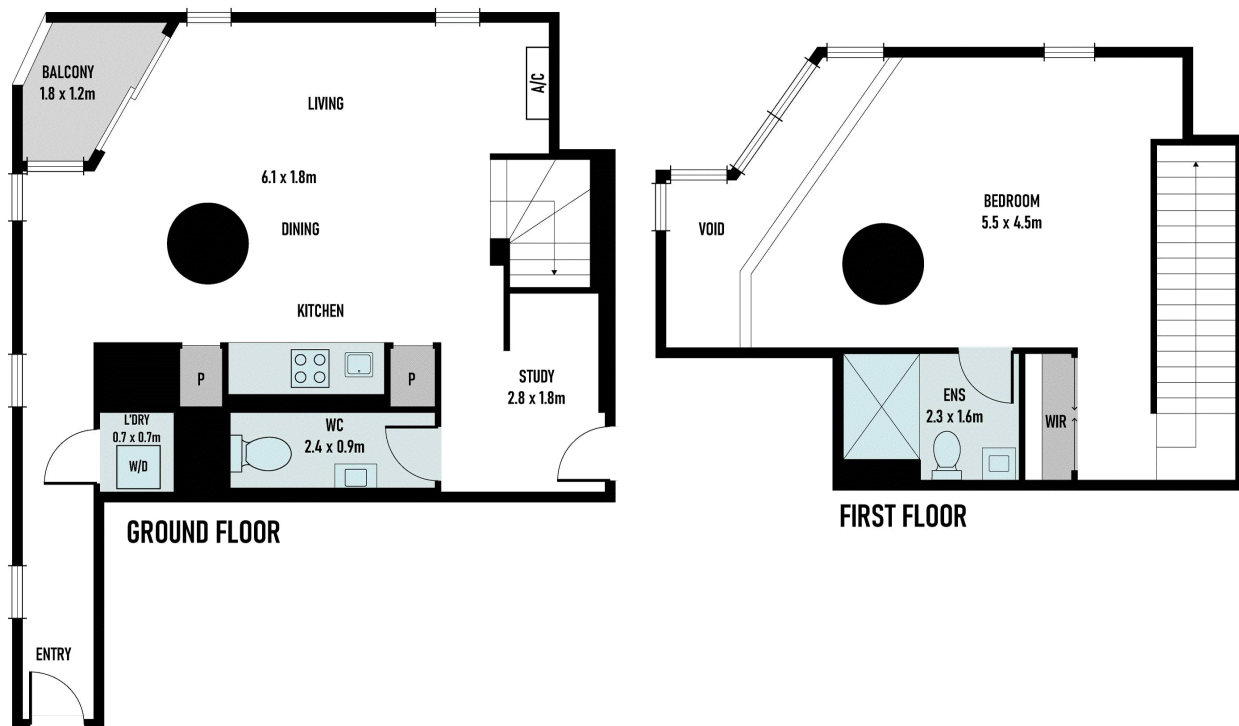
0410 234 188

03 9818 8991

keith.chan@areal.com.au







BOX HILL

Suite 3.4, Level 3, 990 Whitehorse Road, Box Hill. Victoria 3128 | 8686 8388

HAWTHORN EAST

33 Camberwell Road, Hawthorn. Victoria 3123 | 9818 8991

MELBOURNE CBD

Level 7, 99 Queen Street, Melbourne. VIC 3000 | 9818 8991

NORTH

Suites 4 & 5 High Street, Lalor. VIC 3075 | 03 9436 0888

POINT COOK

Entrance C4, Level 1, 2 Main Street, Point Cook. VIC 3030 | 8686 8338

SOUTH MORANG

29 Gorge Road, South Morang. VIC 3752 | 8804 5888

info@areal.com.au