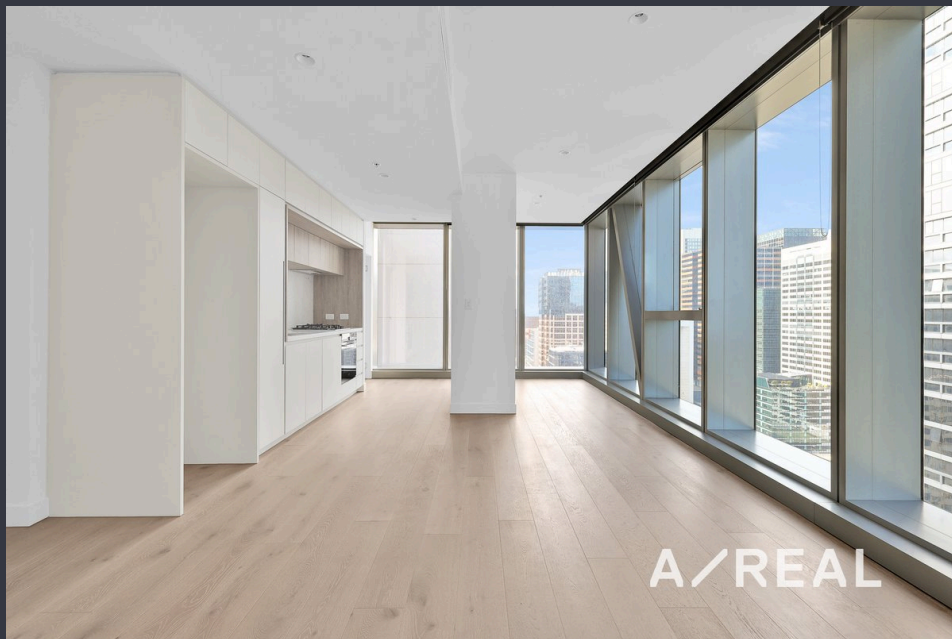


## Brand New 2-Bedroom Apartment in West Side Place – Furnished or Unfurnished



### For Lease

2310D/648 Lonsdale Street, Melbourne VIC 3000

 2  2

\$850 per Week

## For Lease

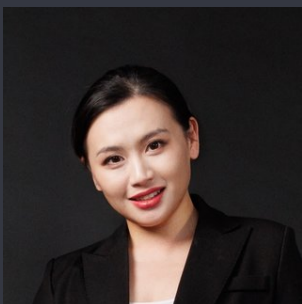
2310D/648 Lonsdale Street, Melbourne VIC 3000



### Brand New 2-Bedroom Apartment in West Side Place – Furnished or Unfurnished

This brand new, contemporary two-bedroom apartment in the iconic West Side Place – Tower Four offers a rare opportunity to enjoy luxurious city living in one of Melbourne's most prestigious addresses. Ideally located just metres from Southern Cross Station, DFO shopping, Coles, and the Docklands, this stunning residence is also within close proximity to major universities, William Angliss TAFE, corporate headquarters, and key employment precincts.

Generously proportioned and filled with natural light, the apartment features an expansive open-plan living and dining area, perfect for both entertaining and day-to-day living. A separate multi-purpose zone, surrounded by panoramic city views, creates the perfect space for a home office, study nook, or reading area. The modern kitchen is stylish and functional, while both bedrooms are well-sized and include built-in robes. The master bathroom is beautifully appointed and features a luxurious hot tub, offering a private retreat for relaxati...



#### Renata Xiang

Business Development Manager

0437 626 898

03 9116 5797

[renata.xiang@areal.com.au](mailto:renata.xiang@areal.com.au)

A/REAL



A/REAL



A/REAL



A/REAL

## BOX HILL

Suite 3.4, Level 3, 990 Whitehorse Road, Box Hill. Victoria 3128 | 8686 8388

## HAWTHORN EAST

33 Camberwell Road, Hawthorn. Victoria 3123 | 9818 8991

## MELBOURNE CBD

Level 7, 99 Queen Street, Melbourne. VIC 3000 | 9818 8991

## NORTH

Suites 4 & 5 High Street, Lalor. VIC 3075 | 03 9436 0888

## POINT COOK

Entrance C4, Level 1, 2 Main Street, Point Cook. VIC 3030 | 8686 8338

## SOUTH MORANG

29 Gorge Road, South Morang. VIC 3752 | 8804 5888

[info@areal.com.au](mailto:info@areal.com.au)