

Comfortable Living in a Convenient Location – 4- Bedroom Gem



For Lease

16 Magenta Drive, Wollert VIC 3750

 4  2

\$520 per Week

For Lease

16 Magenta Drive, Wollert VIC 3750

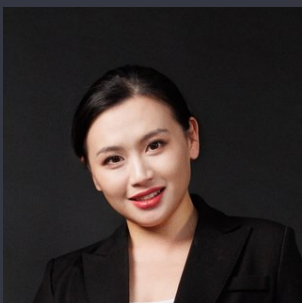
 4  2

Comfortable Living in a Convenient Location – 4-Bedroom Gem

Perfectly located just a short stroll from Kilarney Boulevard Park and only moments from Mernda Station and Aurora Village Shopping Centre, this beautifully presented four-bedroom home offers the perfect balance of space, comfort, and convenience. With a family-friendly layout and quality finishes throughout, it's an ideal choice for those seeking a relaxed lifestyle in a well-connected location.

The master bedroom features a private ensuite and walk-in robe, while the remaining three bedrooms are generously sized and fitted with built-in robes. The modern kitchen is equipped with a gas cooktop, oven, and dishwasher, and overlooks a spacious open-plan living and dining area that's perfect for entertaining. A central bathroom with a full-size bathtub, separate shower, and toilet, along with a European-style laundry, add to the home's practical appeal.

Additional highlights include ducted heating and cooling for year-round comfort, a double remote garage with internal access, a secure...



Renata Xiang

Business Development Manager

0437 626 898

03 9116 5797

renata.xiang@areal.com.au



A/REAL



BOX HILL

Suite 3.4, Level 3, 990 Whitehorse Road, Box Hill. Victoria 3128 | 8686 8388

HAWTHORN EAST

33 Camberwell Road, Hawthorn. Victoria 3123 | 9818 8991

MELBOURNE CBD

Level 7, 99 Queen Street, Melbourne. VIC 3000 | 9818 8991

NORTH

Suites 4 & 5 High Street, Lalor. VIC 3075 | 03 9436 0888

POINT COOK

Entrance C4, Level 1, 2 Main Street, Point Cook. VIC 3030 | 8686 8338

SOUTH MORANG

29 Gorge Road, South Morang. VIC 3752 | 8804 5888

info@areal.com.au