

Timeless style in prime lifestyle setting



For Sale

5/1 Celeste Court, St Kilda East VIC 3183

 1  1

\$305,000

## For Sale

5/1 Celeste Court, St Kilda East VIC 3183



### Timeless style in prime lifestyle setting

Expression of Interest: Monday 29 September at 5pm.

Positioned within a boutique, 1960s complex, this beautifully presented 1 bedroom, 1 bathroom apartment is a shining example of low-maintenance living with timeless appeal.

Whether you're a first-home buyer, savvy investor or stress-free lifestyle seeker, this residence offers immediate comfort and convenience. Bathed in an abundance of natural light, meticulously maintained interiors comprise of open-plan living/dining, updated kitchen featuring stainless steel appliances, split system heating/AC and dedicated off-street car space - adding further value and ease.

Tucked away in a peaceful court, this hidden gem enjoys a prime location within moments of transport, as well as the vibrant shops and cafés of Alma Village. You're also just minutes from the beach and a host of lifestyle amenities.

Disclaimer: We have in preparing the content used our best endeavours to ensure that the information contained is true and accurate, howeve...



## Lisa Tsang

Sales Executive

0493 890 612

03 9818 8991

[lisa.tsang@areal.com.au](mailto:lisa.tsang@areal.com.au)



## Kay Lim

Sales Executive, Licensed Estate Agent

0416 260 421

03 8686 8388

[kay.lim@areal.com.au](mailto:kay.lim@areal.com.au)

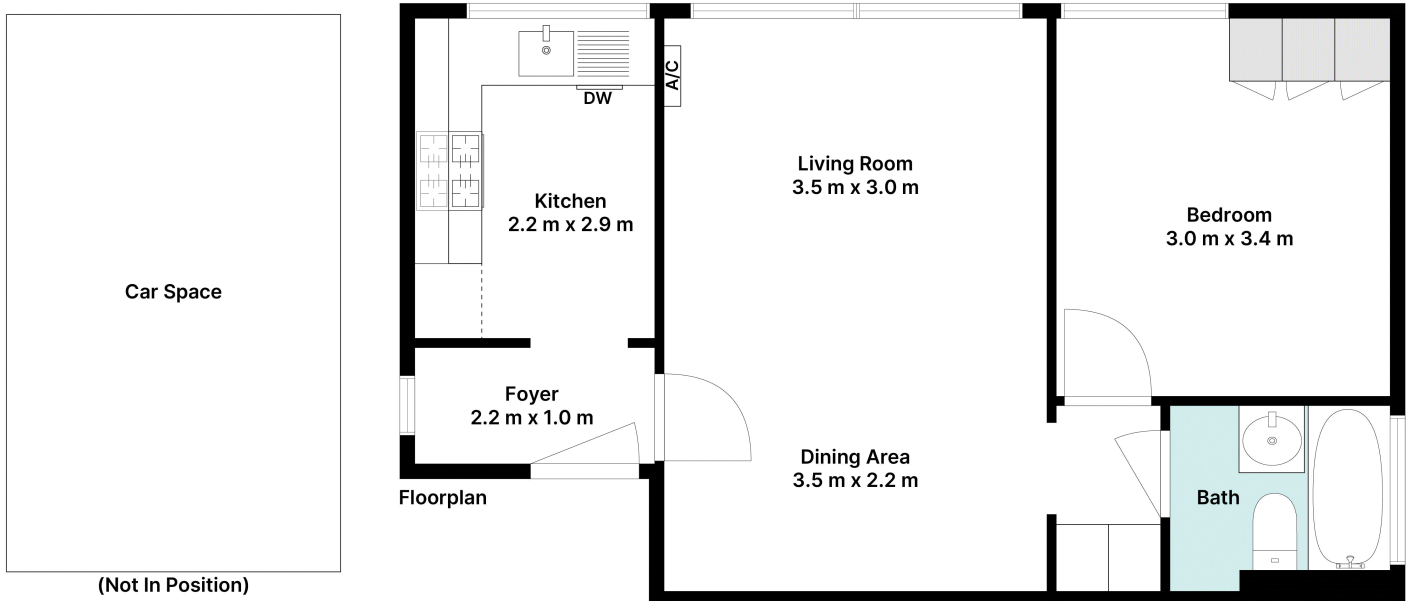




A/REAL



A/REAL



## BOX HILL

Suite 3.4, Level 3, 990 Whitehorse Road, Box Hill. Victoria 3128 | 8686 8388

## HAWTHORN EAST

33 Camberwell Road, Hawthorn. Victoria 3123 | 9818 8991

## MELBOURNE CBD

Level 7, 99 Queen Street, Melbourne. VIC 3000 | 9818 8991

## NORTH

Suites 4 & 5 High Street, Lalor. VIC 3075 | 03 9436 0888

## POINT COOK

Entrance C4, Level 1, 2 Main Street, Point Cook. VIC 3030 | 8686 8338

## SOUTH MORANG

29 Gorge Road, South Morang. VIC 3752 | 8804 5888

[info@areal.com.au](mailto:info@areal.com.au)