

# A/REAL

Modern Comfort and  
Convenience



For Sale

5 Clavell Crescent, Wollert VIC 3750

 3  2

\$585,000

## For Sale

5 Clavell Crescent, Wollert VIC 3750

 3  2

### Modern Comfort and Convenience

Expressions Of Interest by 25th November at 5pm (Or Prior)

Experience modern living at its finest in this sleek, single-level home, perfectly positioned just minutes from schools, parks, and local shops. Only a short five-minute drive from central Epping and a quick 40-minute trip to Melbourne's bustling CBD, this home offers a blend of style and convenience.

The interior is bright and inviting, with an open-plan design connecting the kitchen, living, and dining areas. Featuring 2.7-metre ceilings, contemporary flooring, and neutral tones, this space flows seamlessly onto a private, covered pergola with a deck-ideal for outdoor relaxation.

The gourmet kitchen boasts stone waterfall benchtops, a 900mm gas cooktop, and a walk-in pantry, ensuring an enjoyable cooking experience.

Off the main hallway are three well-appointed bedrooms, including two guest rooms with access to a central bathroom with a separate bath, shower, and toilet. The master bedroom, located at the front, offers a ...



#### Justin Sciola

Sales Director | Auctioneer - AReal Property South Morang

0423 916 416

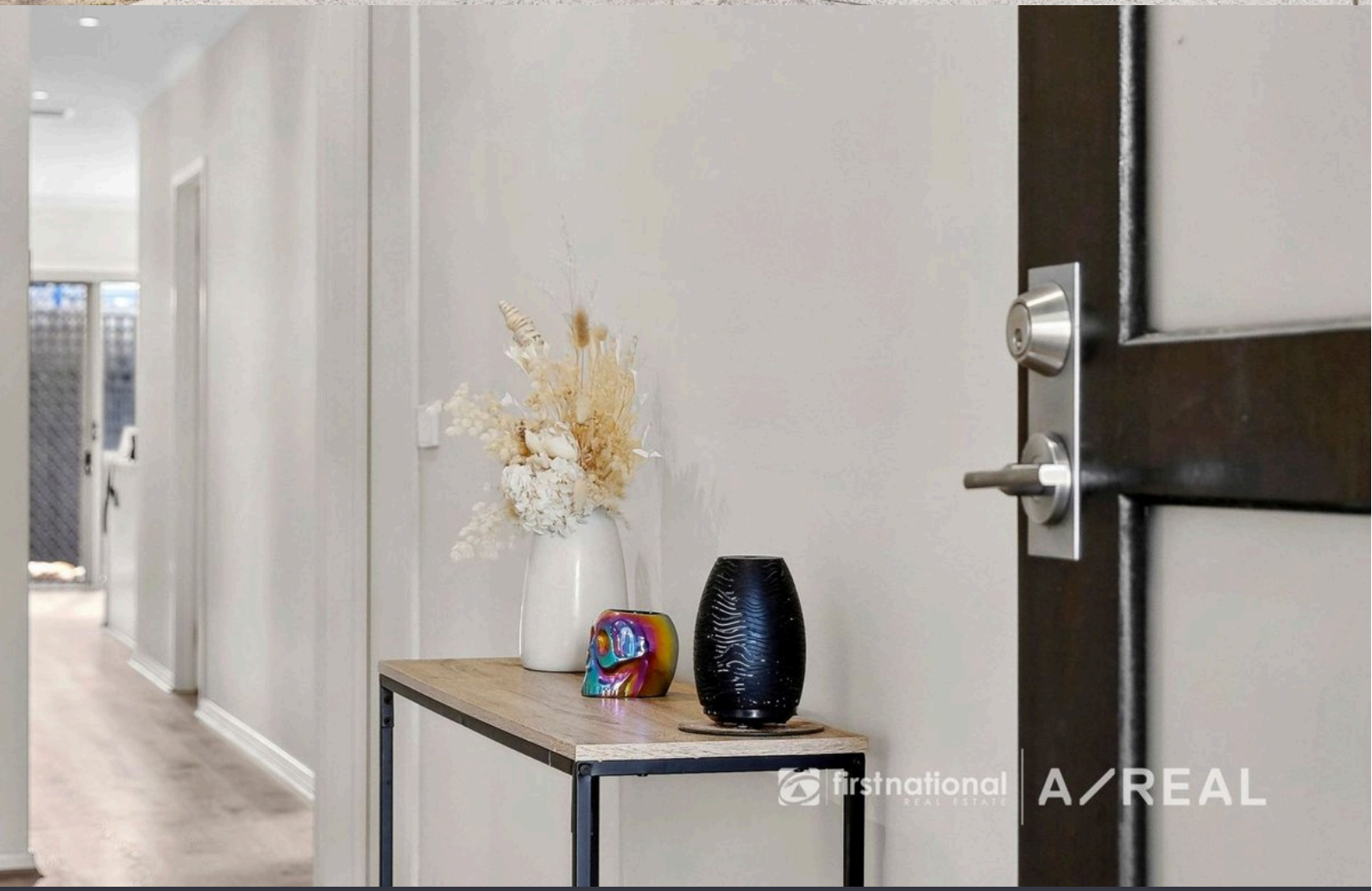
03 8804 5888

[justin.sciola@areal.com.au](mailto:justin.sciola@areal.com.au)

A/REAL



firstnational | A/REAL

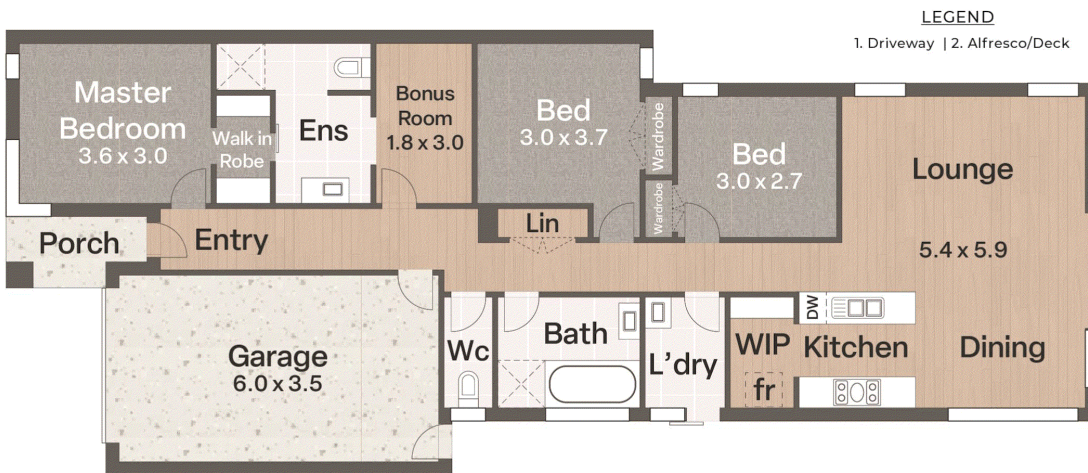


firstnational REAL ESTATE | A/REAL





firstnational A/REAL

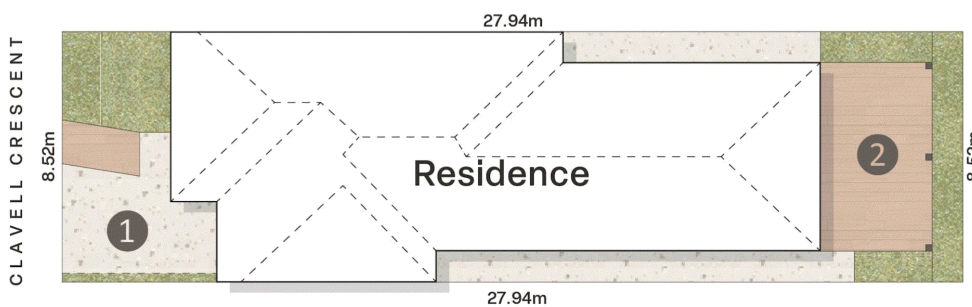


**LEGEND**

1. Driveway | 2. Alfresco/Deck

**:: FLOOR PLAN**

↓ NORTH



**:: SITE PLAN**

firstnational REAL ESTATE

A/REAL

- 124m<sup>2</sup>
- 3 Bed
- 2 Bath
- 1 Car

Please note: This floor plan has been produced for marketing purposes and should be used as a guide only. All measurements are approximate and any person using this information should rely on their own enquiries.

## BOX HILL

Suite 3.4, Level 3, 990 Whitehorse Road, Box Hill. Victoria 3128 | 8686 8388

## HAWTHORN EAST

33 Camberwell Road, Hawthorn. Victoria 3123 | 9818 8991

## MELBOURNE CBD

Level 7, 99 Queen Street, Melbourne. VIC 3000 | 9818 8991

## NORTH

Suites 4 & 5 High Street, Lalor. VIC 3075 | 03 9436 0888

## POINT COOK

Entrance C4, Level 1, 2 Main Street, Point Cook. VIC 3030 | 8686 8338

## SOUTH MORANG

29 Gorge Road, South Morang. VIC 3752 | 8804 5888

[info@areal.com.au](mailto:info@areal.com.au)