

Contemporary Comfort & Convenient Living in Epping



For Lease

5 Tulum Lane, Epping VIC 3076

 3  2

\$530

For Lease

5 Tulum Lane, Epping VIC 3076

 3  2

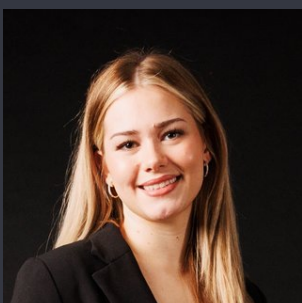
Contemporary Comfort & Convenient Living in Epping

Perfectly positioned in a growing and family-friendly pocket of Epping, 5 Tulum Lane presents a stylish and low-maintenance home designed for comfortable modern living. Offering a practical floorplan, quality finishes, and a convenient location close to everyday amenities, this property is ideal for families, couples, or professionals seeking both comfort and accessibility.

Inside, the home features a light-filled open plan living and dining area that creates a welcoming atmosphere for relaxing or entertaining. The modern kitchen is well-appointed with quality appliances, ample storage, and functional bench space, making it both practical and stylish for daily use.

The accommodation is thoughtfully designed with spacious bedrooms fitted with built-in robes, while the master bedroom offers added privacy and comfort with its own ensuite and walk-in robe. A central bathroom, heating and cooling, and quality finishes throughout further enhance the home's appeal.

Outside, the low-mainte...



Paris Gay

Relationship Manager

0435 827 411

8804 5888

paris.gay@areal.com.au

A/REAL



A/REAL



A/REAL

A/REAL



A/REAL



A/REAL

BOX HILL

Suite 3.4, Level 3, 990 Whitehorse Road, Box Hill. Victoria 3128 | 8686 8388

HAWTHORN EAST

33 Camberwell Road, Hawthorn. Victoria 3123 | 9818 8991

MELBOURNE CBD

Level 7, 99 Queen Street, Melbourne. VIC 3000 | 9818 8991

NORTH

Suites 4 & 5, Level 1, 494 High Street, Lalor. VIC 3075 | 03 9436 0888

POINT COOK

Entrance C4, Level 1, 2 Main Street, Point Cook. VIC 3030 | 8686 8338

SOUTH MORANG

29 Gorge Road, South Morang. VIC 3752 | 8804 5888

info@areal.com.au