

Spacious Family Home



For Lease

8 Cumbungi Road, Beveridge VIC 3753

 4  2

\$2390.00

For Lease

8 Cumbungi Road, Beveridge VIC 3753

 4  2

Spacious Family Home

Nestled in a quiet this modern four-bedroom home offers spacious, low-maintenance living with all the comforts a family needs.

Designed with practicality and style in mind, the home features high ceilings and floating floorboards throughout, creating a bright and welcoming atmosphere. The open-plan living and dining area provides plenty of space to relax and entertain, while the contemporary kitchen is equipped with stone benchtops, a generous pantry, five-burner gas cooktop, integrated dishwasher, and ample storage.

Year-round comfort is assured with ducted heating throughout and a split-system air conditioner in the main living area.

The home comprises four well-sized bedrooms, with built-in sliding wardrobes to three bedrooms, while the central bathroom includes a full-sized bathtub. A separate laundry and internal access from the double remote garage add further convenience to everyday living.

Outside, you'll find a spacious backyard with plenty of room for children to play, o...



Demi Georga

Business Development Director - South Morang Office

0402 605 588

8804 5888

demi.georga@areal.com.au

A/REAL



A/REAL

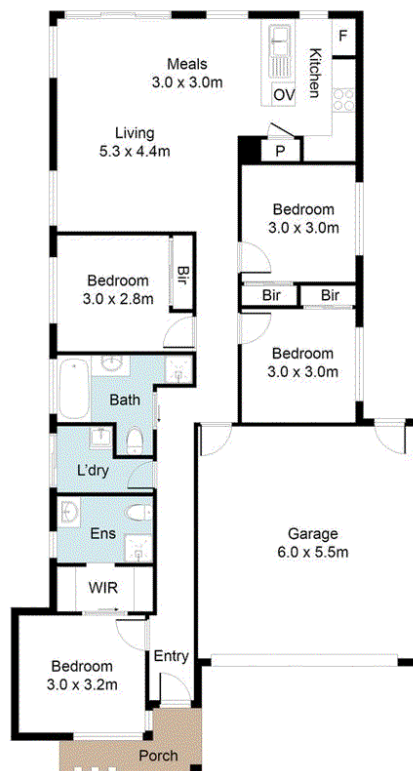


A/REAL





8 Cumbungi Road, Beveridge



BOX HILL

Suite 3.4, Level 3, 990 Whitehorse Road, Box Hill. Victoria 3128 | 8686 8388

HAWTHORN EAST

33 Camberwell Road, Hawthorn. Victoria 3123 | 9818 8991

MELBOURNE CBD

Level 7, 99 Queen Street, Melbourne. VIC 3000 | 9818 8991

NORTH

Suites 4 & 5, Level 1, 494 High Street, Lalor. VIC 3075 | 03 9436 0888

POINT COOK

Entrance C4, Level 1, 2 Main Street, Point Cook. VIC 3030 | 8686 8338

SOUTH MORANG

29 Gorge Road, South Morang. VIC 3752 | 8804 5888

info@areal.com.au