

## Comfort and Convenience



## For Lease

4 Hagen Dr Berwick VIC 3806

 4  2

\$675 per Week

## For Lease

4 Hagen Dr Berwick VIC 3806

 4  2

### Comfort and Convenience

Beautifully positioned in an elevated setting, presenting an exceptional opportunity to secure a home that has been meticulously maintained and thoughtfully enhanced throughout. Bathed in natural light, the interiors reveal a flexible and inviting floorplan where living, dining, and kitchen zones flow effortlessly together, all complemented by polished floorboards that add warmth and refinement.

At the heart of the home, the well-appointed kitchen is both practical and elegant, featuring a generous walk-in pantry, a 900mm gas oven, and a dishwasher, while an additional split system in the adjoining meals area ensures year-round comfort. This space extends seamlessly to a covered pergola, creating an ideal setting for relaxed outdoor dining and entertaining. The dining room also enjoys direct access to the pergola, while the main living area offers a cosy retreat, complete with a gas fireplace—perfect as a winter snug.

Accommodation comprises four well-proportioned bedrooms, each des...

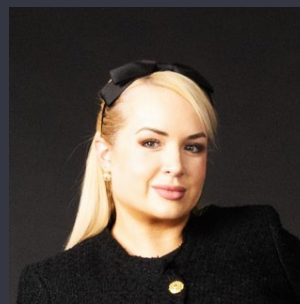


**Lauren Allan**

Leasing Specialist

03 9818 8991

[lauren.allan@areal.com.au](mailto:lauren.allan@areal.com.au)



**Lindel Steel**

Relationship Manager

03 9818 8991

[lindel.steel@areal.com.au](mailto:lindel.steel@areal.com.au)





## BOX HILL

Suite 3.4, Level 3, 990 Whitehorse Road, Box Hill. Victoria 3128 | 8686 8388

## HAWTHORN EAST

33 Camberwell Road, Hawthorn. Victoria 3123 | 9818 8991

## MELBOURNE CBD

Level 7, 99 Queen Street, Melbourne. VIC 3000 | 9818 8991

## NORTH

Suites 4 & 5, Level 1, 494 High Street, Lalor. VIC 3075 | 03 9436 0888

## POINT COOK

Entrance C4, Level 1, 2 Main Street, Point Cook. VIC 3030 | 8686 8338

## SOUTH MORANG

29 Gorge Road, South Morang. VIC 3752 | 8804 5888

[info@areal.com.au](mailto:info@areal.com.au)