

Imagine the Possibilities



## For Sale

31 Keats Avenue, Kingsbury VIC 3083

 3  1  554sqm

\$808,500

## For Sale

31 Keats Avenue, Kingsbury VIC 3083

 3  1  554sqm

### Imagine the Possibilities

Nestled in the heart of Kingsbury, 31 Keats Avenue offers an exceptional opportunity for developers or those yearning to build their dream home on a sizeable plot of land. Spanning 554 square metres, this once cherished family abode presents an excellent canvas with ample space to reimagine, renovate or rebuild (STCA).

With three cosy bedrooms, a family bathroom, and parking for two vehicles, this property is perfectly suited for transformation. Its prime location ensures convenience with easy access to shopping centres, public transport, and a selection of reputable schools including Reservoir High School, Kingsbury Primary, and Reservoir East Primary all within close proximity.

While the house exudes the charm of yesteryears, the real value lies in the generous land size and the potential it holds. This is a rare find in a sought-after area, promising a lifestyle of ease and the chance to create a modern masterpiece tailored to your exacting standards. Don't miss this golden oppor...



### Justin Sciola

Sales Director | Auctioneer - AReal Property South Morang

0423 916 416

03 8804 5888

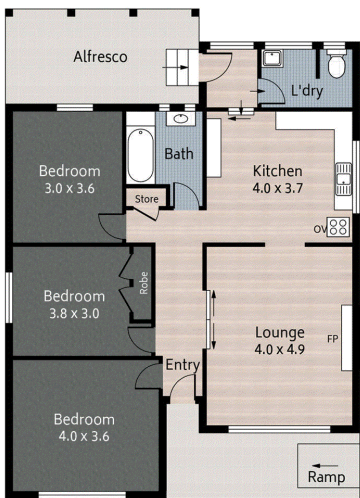
[justin.sciola@areal.com.au](mailto:justin.sciola@areal.com.au)



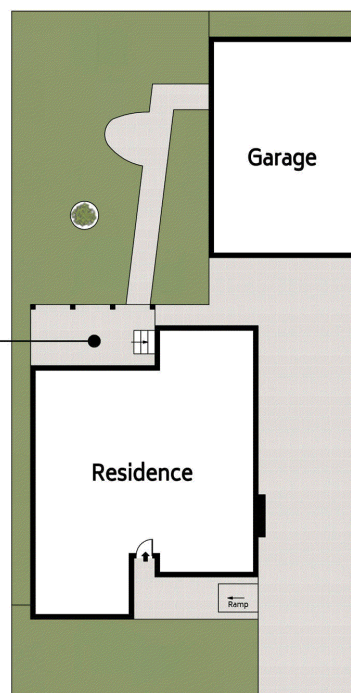
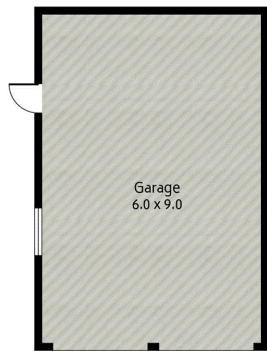




firstnational A/REAL






//FLOOR PLAN



//SITE PLAN

firstnational REAL ESTATE

## A/REAL

-  3 Bed
-  1 Bath
-  2 Car

Please note: This floor plan has been produced for marketing purposes and should be used as a guide only. All measurements are approximate and any person using this information should rely on their own enquiries.  
Produced by MAISONSNAP.COM.AU

## BOX HILL

Suite 3.4, Level 3, 990 Whitehorse Road, Box Hill. Victoria 3128 | 8686 8388

## HAWTHORN EAST

33 Camberwell Road, Hawthorn. Victoria 3123 | 9818 8991

## MELBOURNE CBD

Level 7, 99 Queen Street, Melbourne. VIC 3000 | 9818 8991

## NORTH

Suites 4 & 5 High Street, Lalor. VIC 3075 | 03 9436 0888

## POINT COOK

Entrance C4, Level 1, 2 Main Street, Point Cook. VIC 3030 | 8686 8338

## SOUTH MORANG

29 Gorge Road, South Morang. VIC 3752 | 8804 5888

[info@areal.com.au](mailto:info@areal.com.au)