

'Central South Yarra' with Rooftop Amenities and Car Space



For Sale

2317/3 Yarra Street, South Yarra VIC 3141



\$375,000 - \$412,000

For Sale

2317/3 Yarra Street, South Yarra VIC 3141



'Central South Yarra' with Rooftop Amenities and Car Space

Within the sought-after 'Central South Yarra' complex, this contemporary one-bedroom apartment delivers an enviable blend of style, comfort and convenience. Designed for effortless lock-up-and-leave living, this home presents an exceptional opportunity for astute buyers, first home purchasers or investors seeking a prized South Yarra foothold.

Step inside to a well-considered open-plan layout where the living and dining zones flow with ease, complemented by a sleek kitchen appointed with stone surfaces, Miele appliances, dishwasher and generous pantry storage. Sliding doors open to a private balcony, creating a seamless connection between indoor and outdoor entertaining and offering a welcome retreat to enjoy your morning coffee or evening downtime.

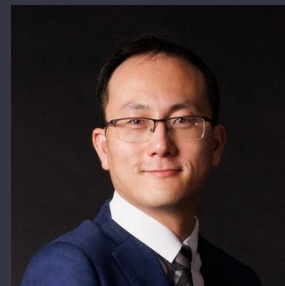
The spacious bedroom is fitted with mirrored built-in robes and enjoys its own direct balcony access, while the bathroom features a frameless glass shower, mirrored cabinetry and integrated European laundry facilities. Split-system heati...



Andy Yuan

Senior Sales Executive, Licensed Estate Agent, Auctioneer

0406 217 388
03 8686 8388
andy.yuan@areal.com.au



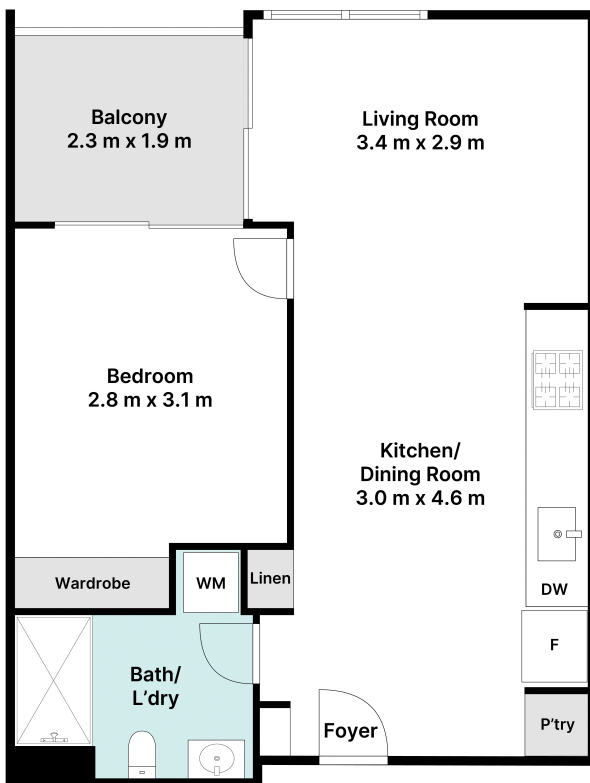
Dave Tang

Sales Executive

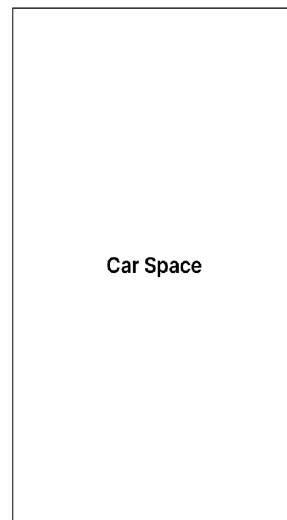
0432 523 853
03 8686 8388
dave.tang@areal.com.au







Floorplan



(Not In Position)

BOX HILL

Suite 3.4, Level 3, 990 Whitehorse Road, Box Hill. Victoria 3128 | 8686 8388

HAWTHORN EAST

33 Camberwell Road, Hawthorn. Victoria 3123 | 9818 8991

MELBOURNE CBD

Level 7, 99 Queen Street, Melbourne. VIC 3000 | 9818 8991

NORTH

Suites 4 & 5, Level 1, 494 High Street, Lalor. VIC 3075 | 03 9436 0888

POINT COOK

Entrance C4, Level 1, 2 Main Street, Point Cook. VIC 3030 | 8686 8338

SOUTH MORANG

29 Gorge Road, South Morang. VIC 3752 | 8804 5888

info@areal.com.au

areal.com.au