

Spacious Family Living with Multiple Living Zones in the Heart of Epping



For Sale

4 Winchester Avenue, Epping VIC 3076

 4  2  554sqm

Auction Saturday 30th May at 10:30am

For Sale

4 Winchester Avenue, Epping VIC 3076



4



2



554sqm

Spacious Family Living with Multiple Living Zones in the Heart of Epping

Nestled in a tranquil and sought-after pocket of Epping, 4 Winchester Avenue presents an exceptional opportunity for first home buyers, upsizers, and growing families alike. Set on a generous 554sqm (approx.) allotment, this spacious double-storey residence delivers a perfect blend of comfort, functionality, and lifestyle appeal.

Upstairs, four well-proportioned bedrooms provide excellent accommodation, including a sizeable master suite complete with walk-in robe and private ensuite. The central family bathroom and separate WC are ideally positioned to service the remaining bedrooms, ensuring convenience for the whole family. Year-round comfort is assured with ducted cooling throughout the upper level.

The ground floor is thoughtfully designed to maximise living space and flexibility, featuring a welcoming lounge, dedicated dining area, leading to a kitchen/meals/family zone enhanced by a charming wood-burning fireplace. The well-appointed kitchen offers ample bench space, storage, ...



Justin Sciola

Sales Director | Auctioneer - AReal Property South Morang

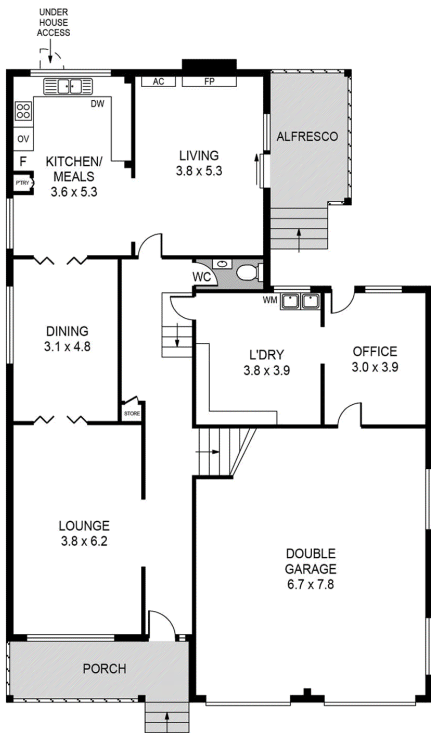
0423 916 416

03 8804 5888

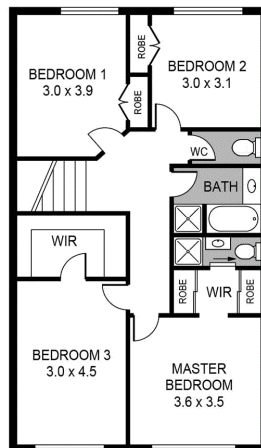
justin.sciola@areal.com.au



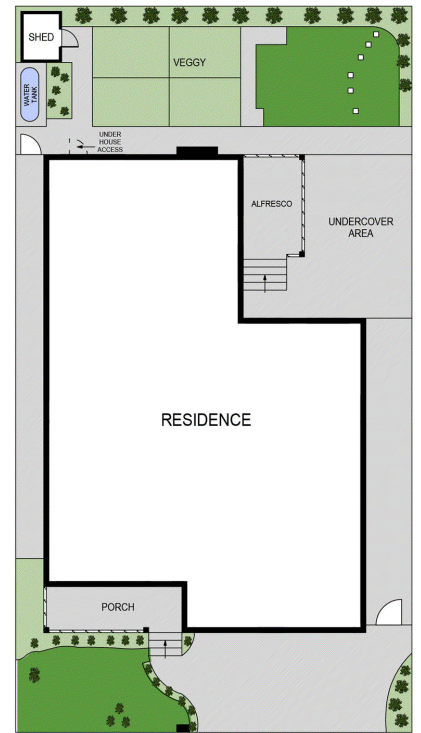




//FLOOR PLAN



//FLOOR PLAN/First Floor



//SITE PLAN

BOX HILL

Suite 3.4, Level 3, 990 Whitehorse Road, Box Hill. Victoria 3128 | 8686 8388

HAWTHORN EAST

33 Camberwell Road, Hawthorn. Victoria 3123 | 9818 8991

MELBOURNE CBD

Level 7, 99 Queen Street, Melbourne. VIC 3000 | 9818 8991

NORTH

Suites 4 & 5, Level 1, 494 High Street, Lalor. VIC 3075 | 03 9436 0888

POINT COOK

Entrance C4, Level 1, 2 Main Street, Point Cook. VIC 3030 | 8686 8338

SOUTH MORANG

29 Gorge Road, South Morang. VIC 3752 | 8804 5888

info@areal.com.au